

अनौपचारिक टिप्पणी

विषय: मेडिकल कॉलेज, भीलवाड़ा की औषधियों, सर्जिकल्स एवं सूचर्स की वित्तीय वर्ष 2018-19 की वार्षिक मांग भिजवाने के सम्बन्ध में।

सन्दर्भ:—अतिरिक्त निदेशक (प्रशा.) एवं पदेन संयुक्त शासन सचिव के पत्र क्रमांक 3554 दिनांक 22.06.2018

उपरोक्त सन्दर्भित विषयान्तर्गत लेख है कि पूर्व में E-Aushadhi Software में Upload हेतु भेजी गई जिला चिकित्सालय, भीलवाड़ा की मांग को निरस्त करते हुए इसके स्थान पर मेडिकल कॉलेज, भीलवाड़ा द्वारा प्रेषित वित्तीय वर्ष 2018-19 की नवीन मांग (संलग्न) आवश्यक अग्रिम कार्यवाही हेतु प्रेषित है।

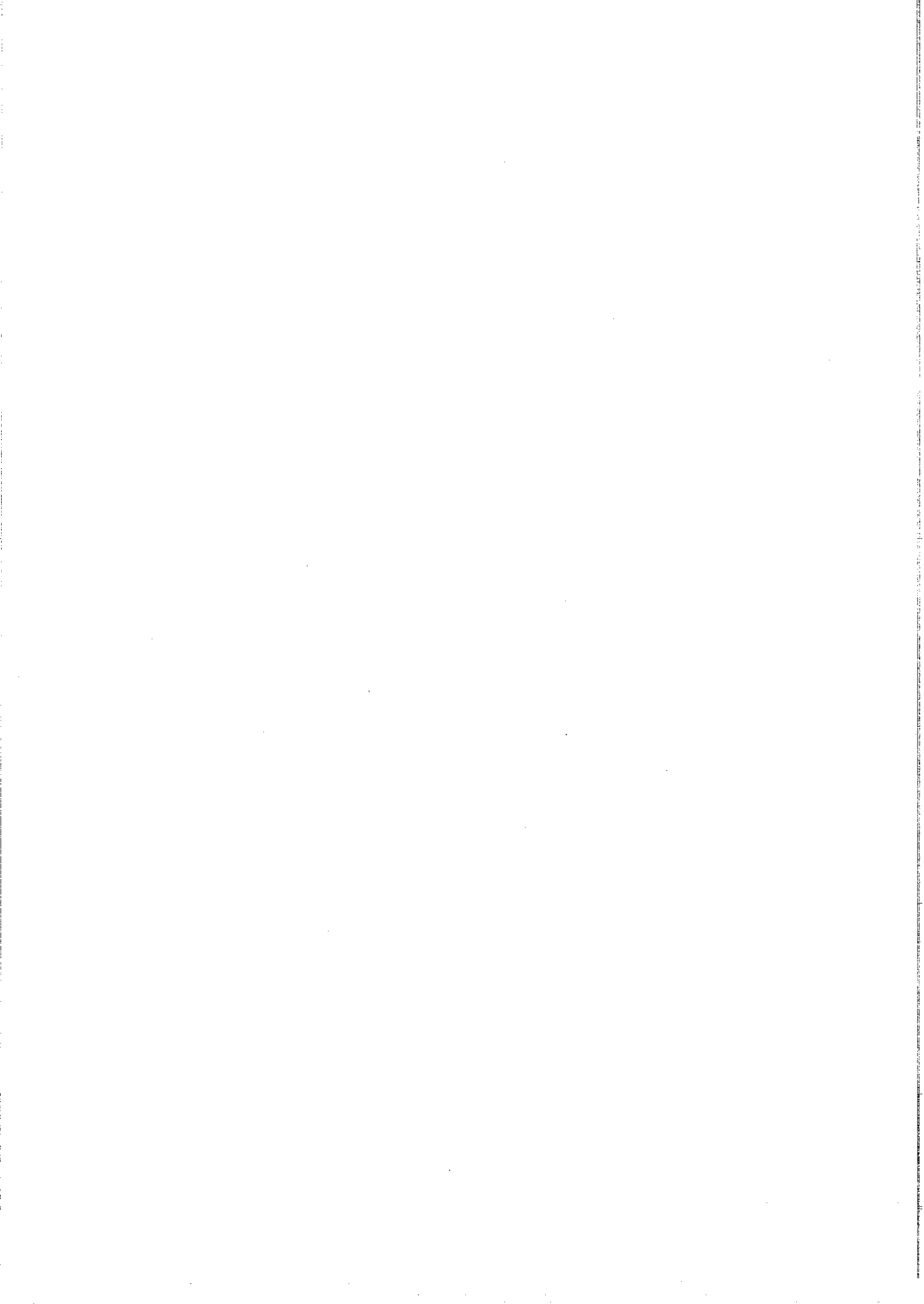
कार्यकारी निदेशक (लॉजिस्टिक्स)
आर.एम.एस.सी.एल.

विशेषाधिकारी
आर.एम.एस.सी.एल.

क्रमांक: एफ.ह. () / आर.एम.एस.सी.एल. / लॉजिस्टिक्स / 2018-19 / 211

दिनांक : 5/7/18

AGM [IT] को भेजकर लेख है कि उक्तानुसार ई-औषधि साफ्टवेयर में इन्द्राज कराया जाना सुनिश्चित करावे।



GOVERNMENT OF RAJASTHAN
DIRECTORATE OF MEDICAL EDUCATION

चिकित्सा शिक्षा भवन, गोविन्द मार्ग, जयपुर-302004.

Email: adddir.dme-ri@gov.in

No. F. 7 (110)/DME/Acad./MNDY/2018/ 3554

Dated: 22/6/2018

प्रबंध निदेशक,
आर. एम. एस. सी. एल.
स्वास्थ्य भवन,
तिलक मार्ग, जयपुर

विषय: मेडिकल कॉलेज, भीलवाड़ा की औषधियों, सर्जिकल्स एवं सूक्ष्म की वित्तीय वर्ष 2018-19 की वार्षिक मांग भिजवाने बाबत।

संदर्भ:- प्रधानाचार्य एवं नियंत्रक मेडिकल कॉलेज, भीलवाड़ा का पत्रांक मेडी/कॉलेज/भील/2018/ 219 दिनांक 19/06/2018.

उपरोक्त विषयान्तर्गत इस पत्र के साथ में वित्तीय वर्ष 2018-19 हेतु मेडिकल कॉलेज, भीलवाड़ा से प्राप्त औषधियों, सर्जिकल्स एवं सूक्ष्म की वार्षिक मांग दूरभाष पर वार्ता के क्रम में पुनः संलग्न कर आवश्यक कार्यवाही हेतु प्रेषित है।
संलग्न: उपरोक्तानुसार।

[बचनेश कुमार अग्रवाल]

अतिरिक्त निदेशक (प्रशा.)

एवं पदेन संयुक्त शासन सचिव

No. F. 7 (110)/DME/Acad./MNDY/2018/

प्रतिलिपि निम्नलिखित को सूचनाथ प्रेषित है:-

1. निजी सचिव, प्रमुख शासन सचिव, चिकित्सा शिक्षा विभाग, राजस्थान सरकार, जयपुर।
2. नोडल अधिकारी, नवीन मेडिकल कॉलेज, निदेशालय चिकित्सा शिक्षा, जयपुर।
3. प्रधानाचार्य एवं नियंत्रक, मेडिकल कॉलेज, भीलवाड़ा को उनके पत्रांक 219 दिनांक 19/06/2018 के क्रम में।

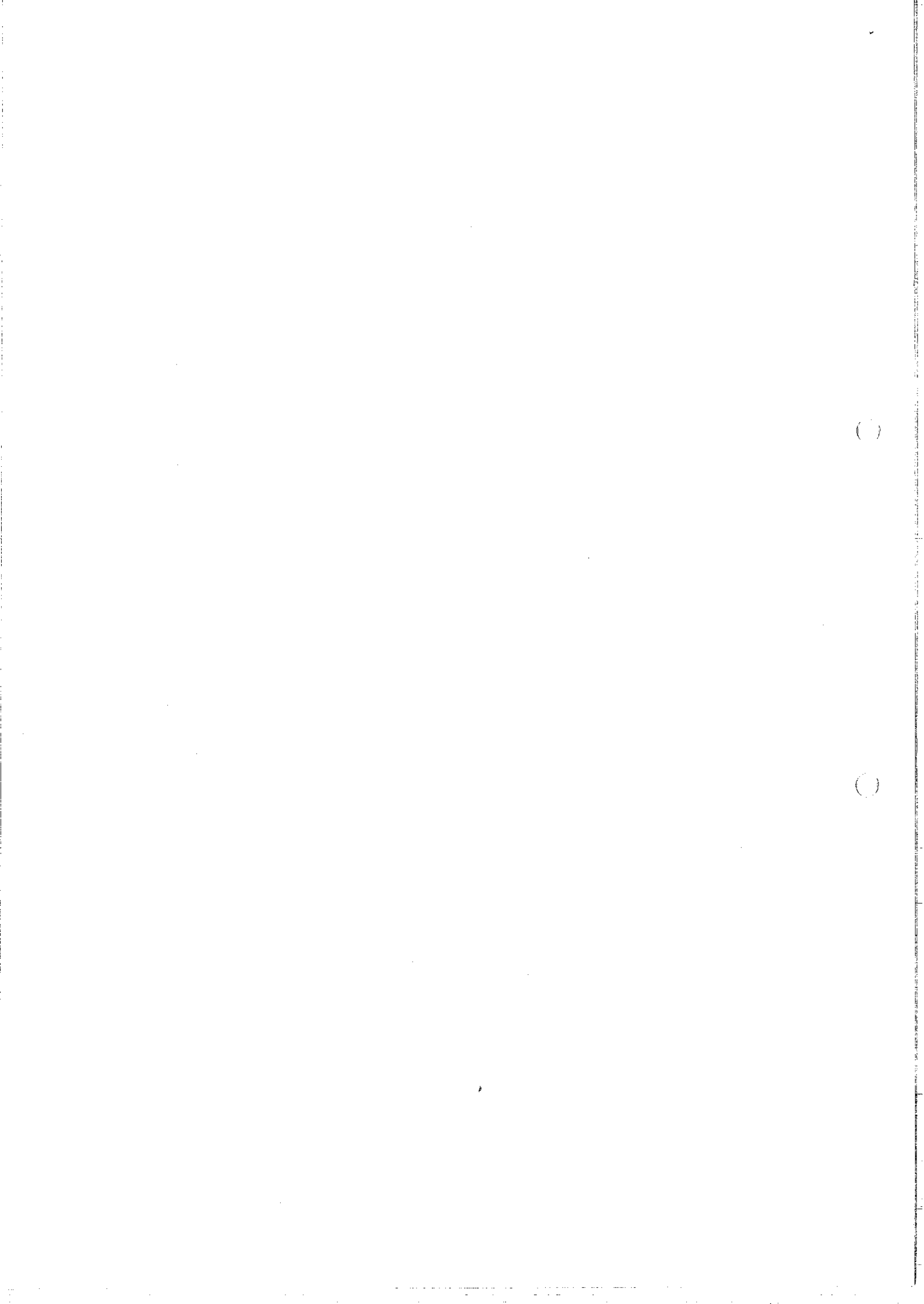
Dated:

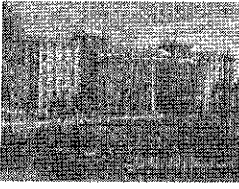
अतिरिक्त निदेशक (प्रशा.)

एवं पदेन संयुक्त शासन सचिव

original file under submission
22/6/18

22-6-18





387

राजस्थान सरकार

कार्यालय, प्रधानाचार्य एवं नियंत्रक,

राजवाता विजयाराजे सिंधिया मेडिकल कॉलेज एवं सम्बद्ध चिकित्सालय संघ, भीलवाड़ा
[सिंदरी के बालाजी रोड, सांगानेर, भीलवाड़ा - 311001 (राजस्थान)]

E-Mail ID: principal.mc.bhilwar@rajasthan.gov.in

Mobile No. 9214511888

क्रमांक- मेडी.कॉलेज/भील/2018/219

दिनांक: 19/06/2018

श्रीमान संयोजक,
राजस्थान मेडिकल एज्युकेशन सोसाइटी एवं
अतिरिक्त निदेशक (प्रशासन),
चिकित्सा शिक्षा विभाग,
निदेशालय, जयपुर

विषय:- आवश्यक दवा सूची के अनुसार औषधियों, सर्जिकल एवं सूचर्स की वित्तीय वर्ष 2018-19 की वार्षिक मांग भिजवाने बाबत

महोदय,

उपरोक्त विषयान्तर्गत निवेदन है की आपके द्वारा माँगी गई औषधियों, सर्जिकल एवं सूचर्स की वित्तीय वर्ष 2018-19 की वार्षिक मांग संलग्न प्रपत्र में भिजवाई जा रही है।

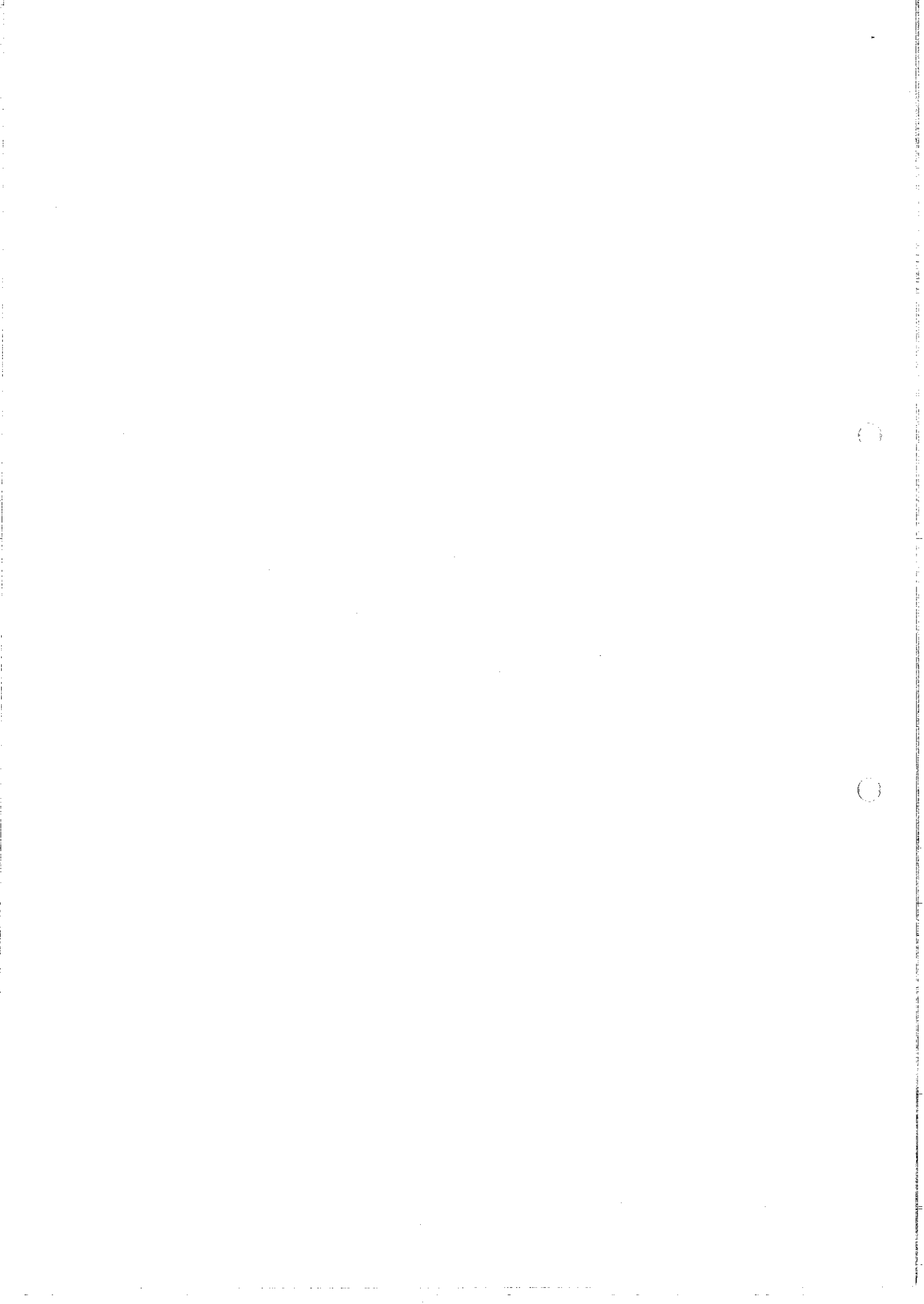
आवश्यक कार्यवाही हेतु प्रेषित

(डॉ. राजेश पाठक)
प्रधानाचार्य एवं नियंत्रक

प्रतिलिपि:

1. श्रीमान उप निदेशक, चिकित्सा शिक्षा विभाग, निदेशालय, जयपुर
2. कार्यालय पत्रावली

(डॉ. राजेश पाठक)
प्रधानाचार्य एवं नियंत्रक



Annual Demand for Year 2018-19

S. No.	Drug Code	Drug Name	MG Annual Demand	Changes before Submission	Medical college Demand
1	2	Bupivacaine Hydrochloride in Dextrose Injection USP Each ml contains Bupivacaine Hydrochloride 5.0 mg Dextrose 80.0 mg [2]	2000	2000	2400
2	4	Bupivacaine Inj IP 0.5% [4]	500	500	600
3	6	Halothane BP [6]	15	15	18
4	7	Isoflurane USP [7]	20	20	24
5	8	Ketamine Inj IP 50 mg/ml [8]	1500	1000	1200
6	9	Lignocaine Ointment 5 o/o [9]	7000	5000	6000
7	10	Lignocaine and Adrenaline Inj IP Each ml. Contains Lignocaine Hydrochloride IP 20 mg Adrenaline IP 0.01 mg [10]	3000	1800	2160
8	12	Lignocaine Gel IP 2% [12]	12000	12000	14400
9	13	Lignocaine Inj IP 2% [13]	12000	8000	9600
10	14	Propofol Inj IP/BP/USP 10 mg/ml [14]	300	200	240
11	15	Thiopentone Inj IP 0.5 g [15]	50	50	60
12	654	Atropine Sulphate Injection 0.6mg/ml [654]	25000	20000	24000
13	19	Diclofenac Sodium Inj IP 25 mg/ ml (IM/IV Use) [19]	150000	150000	180000
14	20	Diclofenac Gastro Resistant Tablet IP 50 mg(Enteric Coated) [20]	300000	200000	240000
15	21	Fentanyl Citrate Injection IP 2 ml [21]	2500	500	600
16	22	Ibuprofen and Paracetamol Tablets Ibuprofen 400 mg+Paracetamol 325 mg [22]	700000	700000	840000
17	23	Ibuprofen Tab IP 200 mg (Coated) [23]	100000	100000	120000
18	24	Ibuprofen Tab IP 400 mg (Coated) [24]	200000	200000	240000
19	25	Morphine Sulphate Inj IP 10mg/ml [25]	300	100	120
20	26	Paracetamol Drops Paediatric Paracetamol Oral Suspension IP(Each ml contains Paracetamol 150mg) [26]	50000	36000	43200
21	27	Paracetamol Syrup IP 125 mg/5ml (Detail in RC) [27]	100000	70000	84000
22	28	Paracetamol Tab IP 500 mg [28]	1000000	1000000	1200000
23	29	Paracetamol Inj. 150 mg/ml [29]	500	500	600
24	30	Pentazocine Inj IP 30mg/ml (IM/IV use) [30]	15000	15000	18000
25	32	Tramadol Cap IP 50 mg [32]	200000	150000	180000
26	33	Tramadol Inj 50 mg/ml [33]	35000	25000	30000
27	436	Indomethacin Cap IP 25 mg [436]	25000	15000	18000
28	437	Diclofenac Prolonged Release Tablet IP 100 mg [437]	100000	80000	96000
29	477	Ibuprofen Oral Suspension BP /USP 100 mg/ 5 ml [477]	30000	30000	36000
30	483	Diclofenac Sod + Paracetamol Tablets Diclofenac Sod 50 mg + Paracetamol 325 mg [483]	700000	800000	960000
31	492	Acetofenac and Paracetamol Tablets Acetofenac 100 mg and Paracetamol 325 mg [492]	500000	400000	480000
32	493	Diclofenac Gel: Diclofenac diethylamine 1.16%, Methyl salicylate 10%, Linseed oil 3%, Menthol 5% [493]	125000	100000	120000
33	496	Mefenamic Acid Tablets BP 500 mg [496]	40000	40000	48000
34	655	Fentanyl Citrate Injection 50mcg/ml [655]	500	500	600
35	656	Naproxen Tablet IP 500mg [656]	5000	5000	6000
36	657	Naproxen Tablet IP 250mg [657]	10000	10000	12000
37	679	Aspirin Tablet IP (Gastro-Resistant) 150 mg [679]	50000	50000	60000
38	34	Adrenaline Injection IP 1mg/ml IM/IV use [34]	10000	6000	7200
39	35	Betamethasone Tab IP 0.5mg [35]	25000	25000	30000
40	37	Chlorpheniramine Maleate Tab IP 4mg [37]	500000	500000	600000
41	39	Dexamethasone Inj IP 8mg/2ml [39]	250000	120000	144000
42	40	Dexamethasone Tab IP 0.5 mg [40]	25000	25000	30000

43	42	Hydrocortisone Sodium Succinate Injection IP 100 mg base / vial (IM/IV use) [42]	50000	30000	36000
44	43	Hydroxyzine Tab IP 25 mg [43]	25000	25000	30000
45	44	Methyl Prednisolone Sodium Succinate for Injection USP 500 mg [44]	5000	3000	3600
46	45	Pheniramine Inj IP 22.75mg /ml [45]	10000	15000	18000
47	47	Prednisolone Tab IP 5 mg [47]	25000	25000	30000
48	48	Promethazine Syrup IP 5 mg/5ml [48]	10000	10000	12000
49	49	Promethazine Inj IP 25mg/ml [49]	50000	40000	48000
50	50	Promethazine Tab IP 25 mg [50]	30000	30000	36000
51	418	Betamethasone Sod Phos Inj IP 4mg/ml [418]	20000	20000	24000
52	469	Prednisolone Tablet IP 10 mg [469]	15000	15000	18000
53	470	Prednisolone Tab 20 mg [470]	5000	5000	6000
54	497	Anticold syrup Each 5 ml contains Phenylephrine Hydrochloride 2.5mg , Chlorpheniramine maleate 1 mg, and Paracetamol 125 mg [497]	100000	70000	84000
55	498	Cetirizine,Phenylephrine & Paracetamol Tablets Cetirizine 5 mg,Phenylephrine 10 mg & Paracetamol 325 mg Tab [498]	500000	500000	600000
56	499	Cetirizine syrup IP 5mg/5 ml [499]	10000	10000	12000
57	659	Levocetirizine Tablet 5mg [659]	300000	300000	360000
58	660	Montelukast(10mg) + Levocetirizine Tablet (5mg) [660]	100000	150000	180000
59	51	Naloxone Inj IP 0.4mg/ ml [51]	100	100	120
60	52	Pralidoxime Chloride Injection IP 25 mg/ml / 500 mg [52]	500	400	480
61	500	Acetylcystine Solution USP (Injection) 200 mg/ml [500]	0	0	0
62	53	Carbamazepine Tab IP 200 mg (Film Coated) [53]	35000	35000	42000
63	54	Carbamazepine Tab IP 100 mg (Film Coated) [54]	25000	25000	30000
64	56	Phenobarbitone Tab IP 30 mg [56]	50000	50000	60000
65	57	Phenytoin Injection 50mg/ml [57]	25000	20000	24000
66	58	Phenytoin Oral suspension IP 25mg/ml [58]	500	300	360
67	59	Phenytoin Tab IP 100 mg (Film Coated) [59]	45000	45000	54000
68	60	Sodium Valproate Inj 100 mg/ ml [60]	50	50	60
69	61	Sodium Valproate Gastro resistant Tablets IP 200 mg [61]	100000	100000	120000
70	420	Phenobarbitone Inj IP 200mg/ml [420]	4000	3500	4200
71	474	Carbamazepine Oral Suspension USP 100 mg/5ml [474]	100	100	120
72	479	Sodium Valproate Oral Solution IP 200 mg / 5 ml [479]	10000	2500	3000
73	661	Sodium Valproate Tablet(Gastro Resistant) IP 500mg [661]	1000	10000	12000
74	662	Clobazam Tablet/Capsule 5 mg [662]	5000	5000	6000
75	663	Clobazam Tablet/Capsule 10 mg [663]	10000	10000	12000
76	664	Levetiracetam Tablet 500 mg [664]	0	2000	2400
77	665	Levetiracetam Oral Suspension 100mg/ml [665]	0	50	60
78	666	Levetiracetam Injection 500mg/5ml [666]	0	0	0
79	62	Acyclovir Oral Suspension IP 400mg/5ml [62]	200	200	240
80	63	Acyclovir Tab IP 200 mg [63]	10000	10000	12000
81	64	Acyclovir Tab IP 800 mg [64]	10000	10000	12000
82	65	Albendazole Oral suspension 400 mg/10ml [65]	7000	7000	8400
83	66A	Albendazole Tablets IP 400 mg(Detail in RC) [66A]	15000	15000	18000
84	67	Amikacin Inj IP 100 mg [67]	15000	15000	18000
85	68	Amikacin Inj IP 500 mg [68]	100000	80000	96000
86	69	Amoxicillin and Cloxacillin Cap 250 + 250 mg [69]	150000	150000	180000
87	70	Amoxicillin and Potassium Clavulanate Tabs IP 500 mg + 125 mg [70]	600000	600000	720000
88	71	Amoxicillin Cap IP 250mg [71]	150000	150000	180000
89	72	Amoxicillin Cap IP 500mg [72]	300000	300000	360000

90	73	Amoxicillin Dispersible Tablets IP 125 mgg [73]	35000	35000	42000
91	75	Ampicillin Injection IP 500 mg [75]	5000	5000	6000
92	78A	Azithromycin Tab 100 mg Dispersible Tabs (3 tab strip 10x3x3) [78A]	30000	30000	36000
93	79A	Azithromycin Tablets IP 250mg [79A]	70000	70000	84000
94	80A	Azithromycin Tab IP 500 mg [80A]	125000	125000	150000
95	81	Benzathine Benzylpenicillin Inj IP 12 lac units [81]	5000	2000	2400
96	82	Benzathine Benzylpenicillin Inj IP 6 lac units [82]	1000	500	600
97	84	Cefixime Tab IP 100 mg [84]	400000	400000	480000
98	85	Cefixime Tab IP 200 mg [85]	600000	600000	720000
99	86	Cefoperazone and Sulbactam for Inj (Cefoperazone Sodium eq. to Cefoperazone 1gm and Sulbactam Sodium eq. to Sulbactam 0.5gm)(IM/IV use) [86]	30000	30000	36000
100	87	Cefotaxime Injection IP 1 g [87]	200000	150000	180000
101	88	Cefotaxime Inj IP 250 mg [88]	35000	35000	42000
102	89	Ceftazidime Inj IP 1g [89]	30000	12000	14400
103	90	Ceftazidime Inj IP 250 mg [90]	5000	3000	3600
104	91	Ceftazidime Inj IP 500 mg [91]	5000	3000	3500
105	93	Ceftriaxone Inj IP 1g /vial [93]	20000	100000	120000
106	94	Ceftriaxone Inj IP 250 mg/vial [94]	10000	10000	12000
107	95	Ceftriaxone Inj IP 500mg/vial [95]	20000	20000	24000
108	96	Cephalexin Cap IP 250 mg [96]	70000	70000	84000
109	97	Cephalexin Cap IP 500 mg [97]	150000	150000	180000
110	98	Chloroquine Phosphate Inj IP 40 mg/ ml [98]	500	500	600
111	99	Chloroquine Phosphate Tab. IP 250mg Eq to 155 mg of Chloroquine base Film Coated [99]	20000	20000	24000
112	100A	Chloroquine Phosphate Suspension IP 50 mg/5ml [100A]	1000	1000	1200
113	101	Ciprofloxacin Injection IP 200mg/100ml [101]	30000	30000	36000
114	102	Ciprofloxacin Tablets IP 250 mg Film Coated [102]	125000	125000	150000
115	103	Ciprofloxacin Tablet IP 500 mg Film Coated [103]	500000	500000	600000
116	104	Clotrimazole Cream IP 2% w/w [104]	25000	25000	30000
117	105	Clotrimazole Vaginal Tab IP 500mg [105]	25000	25000	30000
118	107	Co-trimoxazole oral suspension IP Each 5 ml contains Trimethoprim 40 mg and Sulphamethoxazole 200 mg [107]	15000	15000	18000
119	108	Co-trimoxazole Tablets IP Trimethoprim 40 mg and Sulphamethoxazole 200 mg [108]	50000	50000	60000
120	110	Diethylcarbamazine Tab IP 100 mg [110]	0	0	0
121	111	Doxycycline Cap IP 100 mg [111]	200000	200000	240000
122	114A	Fluconazole Tablets IP 150mg [114A]	50000	50000	60000
123	116	Gentamycin Injection IP 80mg/2ml (IM/ IV use) [116]	60000	60000	72000
124	117	Griseofulvin Tab IP 125 mg [117]	20000	20000	24000
125	118	Itraconazole Cap 100 mg [118]	25000	125000	150000
126	119	Meropenem Inj IP 500 mg [119]	25000	20000	24000
127	120	Metronidazole Inj IP 500 mg/100ml [120]	50000	50000	60000
128	121	Metronidazole Benzoate Oral Suspension IP 100 mg of base/5ml [121]	10000	10000	12000
129	122	Metronidazole Tablets IP 200 mg (Film Coated) [122]	30000	30000	36000
130	123	Metronidazole Tablets IP 400 mg (Film Coated) [123]	500000	500000	600000
131	124	Norfloxacin Tab IP 400mg Film Coated [124]	125000	125000	150000
132	125	Ofloxacin Tab IP 200 mg [125]	125000	125000	150000
133	128	Primaquine Tab IP 2.5 mg [128]	3000	3000	3600
134	129	Primaquine Tab IP 7.5 mg [129]	3000	3000	3600
135	131	Quinine Dihydrochloride Inj IP 300 mg/ml [131]	300	300	360
136	132	Quinine Sulphate Tablets IP 300 mg (Film Coated) [132]	1000	1000	1200

137	412	Ampicillin Cap IP 500mg [412]	20000	20000	24000
138	413	Nitrofurantoin Tab IP 100mg [413]	1000	1000	1200
139	417	Cloxacillin Sodium Inj IP 500mg [417]	0	0	0
140	427	Cephalexin Oral Suspension IP (Cephalexin Dry Syrup IP) 125mg/ 5 ml [427]	10000	10000	12000
141	428	Ofloxacin Oral Suspension IP 50mg/ 5ml [428]	10000	10000	12000
142	430	Tinidazole Tab IP 300 mg (Film Coated) [430]	70000	60000	72000
143	431	Tinidazole Tab IP 500 mg (Film Coated) [431]	50000	50000	60000
144	468	Piperacillin + Tazobactam for Injection USP 4gm+500mg [468]	70000	50000	60000
145	473	Amoxicillin Oral Suspension IP (Dry syrup) 125 mg/5ml [473]	12000	12000	14400
146	475	Cefpodoxime Dispersible Tab 50 mg [475]	70000	70000	84000
147	476	Cephalexin Tablets 125 mg (Dispersible Tablets) [476]	25000	25000	30000
148	481	Meropenem Inj. IP 1gm [481]	35000	20000	24000
149	502	Acyclovir Intravenous Infusion IP 250mg [502]	10	10	12
150	503	Acyclovir Intravenous Infusion IP 500mg [503]	10	10	12
151	504	Amikacin Inj IP 250 mg [504]	30000	30000	36000
152	505	Amoxicillin and Potassium Clavulanic IP Inj 600mg [505]	12000	12000	14400
153	506	Amoxicillin and Potassium Clavulanate Inj IP 1.2gm [506]	25000	20000	24000
154	507	Amoxicillin and Potassium Clavulanate oral suspension IP 200 mg + 28.5 mg/5 ml (30ml Bottle) [507]	35000	35000	42000
155	508A	Artesunate Injection 60 mg (1.M. 1.V. USE) Each Combo pack contains Artesunate Injection 60 mg/Vial, Sodium Bicarbonate Injection IP 5 o/o w/v (1ml ampoule), Sodium chloride Injection IP 0.9o/o w/v (5ml ampoule) [508A]	20000	15000	18000
156	511	Cefixime Oral Suspension IP 25mg/ml (Paediatric Drops) [511]	15000	15000	18000
157	512	Cefuroxime Axetil Tab IP 250 mg [512]	75000	75000	90000
158	513	Clindamycin Capsule IP 150mg [513]	15000	15000	18000
159	514	Clindamycin Capsule IP 300 mg [514]	15000	15000	18000
160	515	Levofloxacin Tablets IP 250 mg [515]	50000	50000	60000
161	519	Mefenidazole and Norfloxacin suspension 100 mg + 100 mg per 5ml [519]	20000	20000	24000
162	520	Ofloxacin and Ornidazole Tablets Ofloxacin 200 mg and Ornidazole 500 mg [520]	200000	300000	360000
163	521	Ofloxacin Infusion IP 200mg / 100 ml(in NaCl Inj) [521]	20000	20000	24000
164	651	Artemether and Leumefantrine Tablet (80 mg and 480 mg) [651]	1000	1000	1200
165	669	Co-trimoxazole Tablet (Trimethoprim 160mg+Sulphamethoxazole 800mg) [669]	200000	200000	240000
166	684	Framycetin Sulphate Cream 1 o/o 30gm Pack [684]	10000	10000	12000
167	685	Framycetin Sulphate Cream 1 o/o 100 gm pack [685]	4000	3000	3600
168	686	Artemether and Leumefantrine Tablet (40 mg and 240 mg) [686]	1000	1000	1200
169	133	Azathioprine Tab IP 50 mg [133]	0	0	0
170	134	Bleomycin Injection IP 15mg (Bleomycin sulphate Injection 15 units) [134]	0	0	0
171	136	Chlorambucil Tab IP 5 mg [136]	0	0	0
172	137	Cisplatin Inj IP 50 mg/ 50 ml [137]	0	0	0
173	138	Cyclophosphamide Inj IP 200 mg [138]	0	10	12
174	139	Cyclophosphamide Inj IP 500 mg [139]	0	10	12
175	141	Cytarabine Injection BP 500mg [141]	0	0	0
176	142	Danazol Cap IP 50 mg [142]	0	0	0
177	143	Daunorubicin Inj IP 20 mg [143]	0	0	0
178	144	Doxorubicin Inj IP 50 mg/ 25 ml [144]	0	5	6
179	146	Etoposide Inj IP 100 mg [146]	0	0	0
180	148	Fluorouracil Inj IP 250 mg/ 5ml [148]	0	20	24

181	149	L-Asparaginase Inj 10000 IU [149]	0	0	0
182	150	Leucovorin Calcium Inj IP / Calcium Follnate Inj IP 10 mg /ml [150]	0	20	24
183	151	Melphalan Tab IP 5 mg [151]	0	0	0
184	152	Meraptopurine Tab IP 50 mg [152]	0	0	0
185	153	Methotrexate Inj IP 50 mg/2 ml [153]	0	0	0
186	154	Methotrexate Tab IP 2.5 mg [154]	1000	1000	1200
187	155	Paclitaxel Inj IP 260 mg [155]	0	10	12
188	156	Paclitaxel Inj IP 100 mg [156]	0	10	12
189	157	Tamoxifen Tab IP 10 mg [157]	0	500	600
190	158	Vinblastine Inj IP 10mg/ 10ml [158]	0	0	0
191	159	Vincristine Inj IP 1mg(vial)/Vincristin Injection USP 1mg/ml (Amp) [159]	0	0	0
192	525	Alpha Interferon Injection Interferon Alpha 2 concentrated Solution IP 3 Million Unit [525]	0	0	0
193	526	Carboplatin Injection 150 mg [526]	0	5	6
194	527	Carboplatin Injection 450 mg [527]	0	5	6
195	528	Cisplatin Inj IP 10 mg/10 ml [528]	0	5	6
196	529	Dacarbazine Injection 500 mg USP/ BP [529]	0	0	0
197	530	Filgrastim Injection (Granulocyte Colony Stimulating Factor) (SC/IV use) 300 mcg [530]	0	25	30
198	531	Gemcitabine for Injection 200 mg [531]	0	10	12
199	532	Gemcitabine for Injection 1gm [532]	0	5	6
200	533	Ifosfamide Injection USP/BP 1gm [533]	0	0	0
201	534	Imatinib Tab 400mg [534]	0	200	240
202	536	Methotrexate Tablets IP 10 mg [536]	1000	1000	1200
203	537	Mitomycine Injection IP 10 mg/Mitomycine for Injection USP 10 mg [537]	0	0	0
204	538	Oxaliplatin Injection USP 50 mg [538]	0	5	6
205	677	Cyclosporin Capsule USP/IP 50 mg [677]	0	0	0
206	160	Levodopa and Carbidopa Tablets IP Levodopa 100 mg + Carbidopa 10 mg [160]	1000	2000	2400
207	161	Levodopa and Carbidopa Tab 250 mg+ 25 mg [161]	2500	2500	3000
208	162	Trihexyphenidyl HCl Tab IP 2 mg [162]	40000	36000	43200
209	163	Acenocoumarol Tab IP/ Nicoumalone Tab IP 2 mg [163]	5000	5000	6000
210	165	Deferasirox Tab 100 mg [165]	10000	10000	12000
211	166	Deferasirox Tab 500 mg [166]	10000	10000	12000
212	167	Deferiprone Cap 250 mg [167]	0	0	0
213	168	Deferiprone Cap 500 mg [168]	0	0	0
214	169	Desferrioxamine Injection IP 500 mg / Vial (For I.M. Inj and I.V.S.C. Infusion) [169]	0	0	0
215	171	Dried Human Anti haemophilic Fraction IP (Dried Factor VIII Fraction IP) 250 IU/ Vial (IV use) [171]	500	500	600
216	172	Enoxaparin Sodium Inj IP 60 mg [172]	25000	24000	28800
217	173	Ethamsylate Inj 250 mg/ 2ml (IM/IV) [173]	15000	12000	14400
218	174	Heparin Sodium Inj IP 5000 IU/ml (IM/IV use) [174]	2000	2000	2400
219	175	Human Albumin Solution IP 20% [175]	1500	1500	1800
220	177	rh-Erythropoetin Inj 2000IU [177]	1000	1000	1200
221	180	Vitamin K Injection Each ml Contains Menadione Sodium Bisulphite 10mg Equivalent to 5.2 mg of Menadione. (Aqueous Solution) [180]	2000	1500	1800
222	406	Factor IX Concentrate (Purified) 600 I.U.(Human Coagulation Factor IX) [406]	20	10	12
223	416	Hydroxyethyl Starch (130/0.4) 6.0% w/v with Sodium Chloride 0.9 % w/v Intravenous Infusion / Balanced Electrolyte solution of sodium chloride, sodium acetate, potassium chloride, magnesium chloride Intravenous Infusion [416]	1000	1000	1200

224	545	Tranexamic Acid Tablets IP/BP 500 mg [545]	60000	60000	72000
225	546	Warfarin Sodium. Tab IP 5mg [546]	2000	1000	1200
226	644	Vitamin K-1 (Phytomenadione) 1mg/0.5ml injection (Detail in RC) [644]	20000	20000	24000
227	688	Dried Factor VIII Fraction (IV use) 500 IU [688]	0	75	90
228	689	Dried Factor VIII Fraction (IV use) 1000 IU [689]	0	75	90
229	181	Amlodarone Tab IP 100 mg [181]	5000	5000	6000
230	182	Amlodarone Tab IP 200 mg [182]	10000	10000	12000
231	183	Amlodarone Hydrochloride Inj 50 mg/ml [183]	3000	500	600
232	184	Amlodipine Tab IP 2.5 mg [184]	150000	150000	180000
233	185	Amlodipine Tablets IP 5 mg [185]	300000	240000	288000
234	186	Atenolol Tab IP 50 mg [186]	100000	100000	120000
235	187	Atorvastatin Tab IP 10mg [187]	250000	200000	240000
236	188	Clopidogrel Tab IP 75 mg [188]	100000	100000	120000
237	189	Digoxin Inj IP 0.25 mg/ml [189]	200	200	240
238	190	Digoxin Tab IP 0.25 mg. [190]	25000	20000	24000
239	191	Diltiazem Tabs IP 30 mg Film Coated [191]	35000	30000	36000
240	192	Dobutamine Inj IP/BP 50mg/ml/250mg (Vial)/Dobutamine Inj USP250 mg/5ml(AMP) [192]	3000	1500	1800
241	193	Dopamine Hydrochloride Inj 40 mg/ml [193]	7000	7000	8400
242	194	Enalapril Maleate Tab IP 5mg [194]	15000	15000	18000
243	195	Enalapril Maleate Tab IP 2.5mg [195]	7000	7000	8400
244	197	Isosorbide dinitrate Tab IP 5 mg [197]	30000	20000	24000
245	198	Isosorbide mononitrate Tabs IP 20 mg [198]	250000	250000	300000
246	199	Lisinopril Tab IP 5 mg [199]	35000	35000	42000
247	200	Losartan Tab IP 50 mg [200]	300000	275000	330000
248	201	Magnesium Sulphate Inj. 50mg/ml (50%w/v) [201]	20000	20000	24000
249	202	Methyldopa Tab IP 250mg Film Coated [202]	15000	15000	18000
250	203	Nifedipine Cap IP 5mg [203]	5000	5000	6000
251	204	Nifedipine Tablets IP 10 mg (Sustained Release) [204]	50000	50000	60000
252	205	Nitroglycerin Inj 5 mg/ ml [205]	700	700	840
253	207	Propranolol Tab IP 40 mg [207]	70000	50000	60000
254	209	Streptokinase Injection 15 lac units [209]	1000	1000	1200
255	211	Verapamil Tab IP 40 mg Film Coated [211]	5000	5000	6000
256	410	Labetalol Tab IP 100mg [410]	25000	25000	30000
257	411	Labetalol HCl Inj IP 20mg/4ml [411]	2000	2000	2400
258	444	Aspirin Delayed Release Tablet / Aspirin Gastroresistant Tab (Each enteric coated tablet contains acetyl salicylic acid 75 mg) [444]	300000	300000	360000
259	457	Amlodipine and Enalapril Maleate Tablets (Amlodipine Besilate equivalent to Amlodipine 5 mg, Enalapril Maleate 5 mg) [457]	12000	12000	14400
260	458	Losartan Potassium and Amlodipine Tablets IP (Losartan Potassium 50 mg, Amlodipine Besilate eq to Amlodipine 5mg) [458]	50000	50000	60000
261	459	Losartan Potassium and Hydrochlorothiazide Tablets IP(Losartan Potassium 50 mg, Hydrochlorothiazide 12.5 mg) [459]	150000	150000	180000
262	460	Amlodipine and Lisinopril Tablets Amlodipine Besilate equivalent to Amlodipine 5 mg, Lisinopril eq to Lisinopril (anhydrous) 5 mg [460]	30000	30000	36000
263	461	Amlodipine and Atenolol Tablet (Amlodipine Besilate Equivalent to Amlodipine 5mg, Atenolol 50mg) [461]	150000	150000	180000
264	462	Atenolol Tab IP 25 mg [462]	100000	100000	120000
265	463	Enalapril Maleate Tablets IP 10 mg [463]	5000	5000	6000
266	465	Lisinopril Tablets IP 10 mg [465]	3000	3000	3600
267	466	Lisinopril Tab IP 2.5 mg [466]	10000	10000	12000

268	467	Losartan Tab IP 25 mg [467]	150000	150000	180000
269	547	Adenosine Injection 6 mg/2ml [547]	2000	200	240
270	548	Atorvastatin Tablets IP 40 mg [548]	200000	200000	240000
271	549	Clopidogrel and Aspirin Tablets, Clopidogrel 75 mg and Aspirin 75 mg [549]	300000	250000	300000
272	550	Fenofibrate Capsules IP 200 mg [550]	15000	15000	18000
273	552	Metoprolol Tablets IP 25 mg [552]	60000	50000	60000
274	553	Metoprolol Succinate Extended Release Tablets IP/USP 50 mg [553]	150000	150000	180000
275	554	Noradrenaline Injection IP 2 mg/ml [554]	2000	1000	1200
276	555	Prazosin Tablets (Extended Release) 2.5 mg [555]	0	0	0
277	556	Telmisartan Tablets IP 40 mg [556]	100000	100000	120000
278	636	Ramipril Tablets IP 2.5 mg [636]	125000	100000	120000
279	650	Glyceril Trinitrate Tablets 2.6 mg Controlled Release tablets [650]	25000	25000	30000
280	580	Chlorhexidine Mouthwash IP/BP 0.2 o/o [580]	3000	3000	3600
281	581	Dental Gel Choline salicylate 8.7 o/o, Benzalkonium Chloride 0.01 o/o, Lignocaine HCl 2 o/o (flavoured gel base) [581]	3000	3000	3600
282	582	Tooth Gel Sodium Monofluorophosphate 0.7 o/o and Potassium Nitrate 5 o/o (In flavoured base) [582]	10000	8000	9600
283	583	Gum Paint containing Tannic acid 2%, Cetrimide 0.1%, Zinc Chloride 1% [583]	5000	5000	6000
284	584	Metronidazole 1% and Chlorhexidine Gluconate 0.25% Gel [584]	3000	3000	3600
285	106	Compound Benzoic Acid Ointment IP Benzoic Acid 6 o/o + Salicylic Acid 3 o/o [106]	5000	3000	3600
286	213	Acyclovir Cream 5% [213]	1000	1000	1200
287	215A	Cetrimide Cream IP 15 gm [215A]	5000	5000	6000
288	216A	Fusidic Acid Cream IP 2% [216A]	20000	15000	18000
289	217	Glycerin IP 400 gm [217]	200	200	240
290	218	Liquid Paraffin IP 400 ml [218]	200	200	240
291	220	Miconazole Nitrate Cream IP 2% [220]	30000	24000	28800
292	221	Povidone Iodine ointment 5% 15 gm [221]	70000	60000	72000
293	223	Neomycin Bacitracin and Sulphacetamide Power (Neomycin 5 mg, Bacitracin 250 units, Sulphacetamide 60 mg) [223]	2000	2000	2400
294	224	Silver Sulphadiazine cream IP 1% 50gm Tube [224]	10000	10000	12000
295	246	Gentian Violet Topical Solution USP 1o/o [246]	500	500	600
296	443	Clotrimazole mouth paint (Clotrimazole 1 o/o w/v) [443]	3000	2000	2400
297	445	betomethasone, Neomycin and Clotrimazole Cream (Betomethasone Dipropionate 0.025 %, Neomycin Sulphate 0.5 % and Clotrimazole 1 %) [445]	35000	30000	36000
298	446	Gamma Benzene Hexachloride Lotion 1%(Lindane Lotion USP) [446]	2000	2000	2400
299	558	Betamethasone Dipropionate Cream IP 0.05% [558]	15000	10000	12000
300	559	Betamethasone Lotion IP 0.05 o/o [559]	6000	4000	4800
301	560	Clindamycin Phosphate Gel USP 1 o/o [560]	7000	6000	7200
302	561	Clobetasol Propionate Cream 0.05 o/o [561]	5000	3000	3600
303	564	Glycerin IP 100 ml [564]	500	500	600
304	565	Ketoconazole cream 2% [565]	10000	10000	12000
305	568	Permethrin Lotion 5% [568]	5000	3000	3600
306	569	Permethrin Cream 5% [569]	5000	5000	6000
307	570	Tretinoin cream USP 0.025% [570]	7000	7000	8400
308	670	Coal tar 6% & Salicylic Acid 3% Ointment [670]	500	500	600
309	671	Calamine Lotion IP 100ml [671]	8000	8000	9600
310	225	Anti A Blood Grouping Serum IP(Anti A Monoclonal Serum) [225]	1000	1000	1200

311	226	Anti B Blood Grouping Serum IP(Anti B Mono Clonal Serum) [226]	1000	1000	1200
312	227	Anti D(Rh) Blood Grouping Serum IP/Anti D Blood Grouping Serum IP [227]	1000	1000	1200
313	232	Diatrizoate Meglumine & Diatrizoate Sodium Inj USP 60% (Iodine Conc.= 292 mg/ml) [232]	0	0	0
314	233	Diatrizoate Meglumine and Diat Sod Inj USP 76%w/v (Iodine = 370 mg/ml) [233]	0	0	0
315	242	VDRL Antigen (with + ve and - ve control) / RPR Slide Kit [242]	300	150	180
316	482	Iohexol USP (Solution For Injection) Non Ionic Contrast Medium in Sterile aqueous Solution 300 mg Iodine/ml [482]	500	200	240
317	672	Iohexol USP(Solution for Injection) Non Ionic contrast medium in Sterile aqueous solution 350 mg Iodine/ml. [672]	1000	300	360
318	673	Diagnostic Sticks for Multiple use strip (Sugar, Ketone, Albumin) [673]	2000	2000	2400
319	222	Povidone Iodine solution IP 5 % 500 ml [222]	4000	3000	3600
320	244	Compound Benzoin Tincture IP [244]	50	50	60
321	245	Formaldehyde solution (34.5 Per. - 38 Per.) [245]	1000	1000	1200
322	247	Glutaraldehyde Solution 2% [247]	1000	600	720
323	248	Hydrogen Peroxide Solution IP 6 o/o (20 Vol) [248]	1000	1000	1200
324	249	Lysol (Cresol with Soap Solution) IP (Cresol 50 o/o + Soap 50 o/o) [249]	1000	600	720
325	250	Povidone Iodine Scrub Solution / cleansing solution 7.5 o/o w/v Povidone Iodine (suitable for hand wash) [250]	500	400	480
326	252	Surgical Spirit IP/BP (500 ml) [252]	2000	2000	2400
327	447	Chlorhexidine Gluconate Solution 5% 250 ml [447]	100	100	120
328	449	Surgical Spirit IP/BP (100 ml) [449]	500	500	600
329	450	Povidone Iodine solution IP 5% 100ml bottle [450]	500	500	600
330	571	Povidone Iodine Ointment USP 250 gm [571]	3000	3000	3600
331	572	Povidone Iodine Solution IP 10 % [572]	1000	1000	1200
332	573	Silver Sulphadiazine cream IP 1% 500 gm Jar [573]	500	500	600
333	253	Acetazolamide Tab IP 250mg [253]	20000	20000	24000
334	254	Furosemide Tab IP 40 mg [254]	50000	50000	60000
335	255	Furosemide Injection IP 10mg/ml (IM and IV use) [255]	50000	36000	43200
336	256	Hydrochlorothiazide Tab IP 12.5 mg [256]	30000	30000	36000
337	257A	Mannitol Inj IP 20% w/v [257A]	8000	6000	7200
338	258	Spirolactone Tab IP 25mg [258]	15000	15000	18000
339	259	Torsemide Tab 10 mg [259]	50000	50000	60000
340	464	Hydrochlorothiazide Tab IP 25mg [464]	2000	2000	2400
341	471	Torsemide Inj 10 mg/ml [471]	5000	5000	6000
342	574	Spirolactone Tablets IP 50 mg [574]	15000	15000	18000
343	585	Ciprofloxacin 0.3 o/o and Dexamethasone 0.1 o/o Ear Drops Ciprofloxacin and Dexamethasone Otic Suspension USP [585]	10000	10000	12000
344	586	Clotrimazole 1 o/o with Betamethasone Dipropionate 0.025 o/o Ear Drops [586]	500	500	600
345	588	neomycin, Polymixin B and Hydrocortisone Ear Drops neomycin sulphate 3400 IU, Polymixin B Sulphate 10000 IU, and Hydrocortisone 10 mg per ml Neomycin and Polymixin B Sulfate and Hydrocortisone Otic Solution USP [588]	200	200	240
346	589	Ceruminolytic Drops (Wax dissolving ear drops) Paradichlorobenzene 2 o/o , Benzocaine 2.7 o/o , Chlorbutol 5 o/o, Turpentine oil 15 o/o [589]	10000	8000	9600
347	5	Drotaverine Hydrochloride Inj 40 mg/2 ml [5]	35000	30000	36000
348	219	Ointment containing Lidocaine IP 3 o/o Zinc oxide IP 5 o/o , Hydrocortisone IP 0.25 o/o, Allantoin IP 0.5 o/o [219]	10000	10000	12000
349	260A	Antacid Tablets. Formula, each chewable tablet contains Magnesium Trisilicate 250 mg, Dried Aluminium Hydroxide Gel 120 mg, Peppermint Oil [260A]	30000	30000	36000

350	261A	Antacid Liquid, Each 5ml contains Dried Aluminium Hydroxide Gel 250 mg, Magnesium Hydroxide 250mg, Activated polydimethyl siloxane 50mg [261A]	25000	25000	30000
351	262	Bisacodyl Tab IP 5 mg [262]	30000	30000	36000
352	263	Dicyclomine Tab IP 10 mg [263]	100000	100000	120000
353	264	Dicyclomine Inj IP 10 mg /ml [264]	20000	20000	24000
354	265	Dicyclomine Hydrochloride Oral Solution IP 10mg /5ml [265]	6000	6000	7200
355	266	Domperidone Suspension IP 5mg/5ml [266]	5000	5000	6000
356	267	Domperidone Tab IP 10 mg [267]	100000	100000	120000
357	268	Hyoscine Butylbromide Inj IP 20 mg/ ml [268]	12000	12000	14400
358	269	Loperamide Tab IP 2 mg [269]	10000	10000	12000
359	270	Metoclopramide Inj IP 10mg/2ml [270]	75000	60000	72000
360	271	Metoclopramide Tab IP 10 mg [271]	25000	25000	30000
361	272	Omeprazole Cap IP 20 mg [272]	500000	500000	600000
362	273	Ondansetron Inj IP 2mg/ml [273]	30000	30000	36000
363	274	ORS Powder IP [274]	75000	75000	90000
364	275	Pantoprazole Inj 40 mg [275]	40000	30000	36000
365	276	Ranitidine HCL Injection IP 50mg/2ml [276]	75000	75000	90000
366	277	Ranitidine Tab IP 150mg Film Coated [277]	500000	400000	480000
367	278	Sodium Phosphates Efficacy BP Each 100ml contains Sodium Dihydrogen phosphate Dihydrate 10 o/o Disodium Hydrogen Phosphate Dodecahydrate 8 o/o [278]	30000	30000	36000
368	414	Hyoscine Butyl bromide Tablets IP 10mg [414]	15000	15000	18000
369	415	Drotaverine Tab IP 40 mg [415]	50000	50000	60000
370	433	Ranitidine Tab IP 300mg Film Coated [433]	100000	100000	120000
371	438	Dicyclomine Hydrochloride and Activated Dimethicone suspension Each ml contains Dicyclomine Hydrochloride 10mg Activated Dimethicone 40mg [438]	2000	2000	2400
372	439A	Dicyclomine and Paracetamol Tablets Dicyclomine Hydrochloride 20 mg + Paracetamol 325 mg Tablets [439A]	150000	150000	180000
373	478	Metoclopramide Hydrochloride Syrup IP 5 mg/ 5ml [478]	2000	2000	2400
374	590	Domperidone Oral Drops 10mg/ ml (10ml) [590]	5000	5000	6000
375	591	Drotaverine and Mefenamic Acid Tablets Drotaverine 80 mg and Mefenamic Acid 250 mg [591]	75000	75000	90000
376	592	Lactic Acid Bacillus Tab 60 million spores [592]	100000	100000	120000
377	593	Lactulose solution USP/BP 10gm/15ml or 3.35 gm/5ml [593]	40000	30000	36000
378	594	Liquid Paraffin IP 100 ml [594]	100	100	120
379	595	Ondansetron Orally Disintegrating Tablets IP 4mg [595]	30000	30000	36000
380	596	Pantoprazole 40mg and Domperidone 30mg SR Cap Pantoprazole as enteric coated pellets and Domperidone as SR Pellets [596]	500000	400000	480000
381	597	Ursodeoxycholic Acid Tablets 300 mg [597]	25000	25000	30000
382	598	Allopurinol Tablets IP 100 mg [598]	20000	10000	12000
383	599	Hydroxychloroquine Sulphate Tablets 200mg [599]	500	500	600
384	279	Biphasic Isophane Insulin Inj IP (30 % soluble insulin and 70 % isophane insulin) inj. 40 IU/ml (R-DNA Origin) [279]	15000	12000	14400
385	280	Carbimazole Tabs IP 5 mg (Film Coated) [280]	2000	2000	2400
386	281	Carboprost Tromethamine Injection Each ml contains Carboprost 0.25 mg/ml [281]	3000	3000	3600
387	282	Clomifene Tab IP 25 mg [282]	3000	3000	3600
388	283	Clomiphene Tab IP 50 mg [283]	2000	2000	2400
389	284	Conjugated Estrogen Tabs USP 0.625 mg. [284]	0	0	0
390	285	Dinoprostone Cream/ Gel 0.5 mg Dinoprostone In Syringe [285]	100	100	120
391	286	Ethinylestradiol Tabs IP 50 mcg [286]	100	100	120
392	287	Glibenclamide Tab IP 5 mg [287]	20000	20000	24000

393	288	Glilclazide Tab IP 40 mg [288]	20000	20000	24000
394	289	Glimepiride Tab IP 2 mg [289]	200000	200000	240000
395	290	Glimepiride Tab IP 1mg [290]	200000	200000	240000
396	291	Glipizide Tab IP 5mg [291]	15000	15000	18000
397	293	Hydroxyprogesterone Inj IP 250mg/ml [293]	1000	1000	1200
398	294	Isophane Insulin Inj IP 40 IU/ml [294]	500	500	600
399	295	Metformin Tab IP 500 mg(Film Coated) [295]	500000	400000	480000
400	296	Norethisterone Tab IP 5 mg [296]	10000	8000	9600
401	297	Pioglitazone Tab IP 15 mg [297]	25000	25000	30000
402	298	Progesterone Inj 200 mg/ 2ml [298]	100	100	120
403	300	Insulin Injection IP (Soluble Insulin/Neutral Insulin Injection)40 IU/ml(r.DNA origin) [300]	600	600	720
404	301	Thyroxine Sodium Tablets IP 100mcg [301]	75000	60000	72000
405	451	Metformin Hydrochloride(Sustained Release Tablets IP 1000 mg [451]	100000	72000	86400
406	452	Glipizide and Metformin Hydrochloride Tablets USP (Glipizide 5 mg, Metformin Hydrochloride 500 mg) [452]	30000	30000	36000
407	453	Glibenclamide and Metformin Hydrochloride (SR) Tablets Glibenclamide 5 mg, Metformin Hydrochloride 500 mg (Sustained Release) [453]	50000	50000	60000
408	454	Metformin HCL (Sustained Release) and Glimepiride Tab Metformin HCL (Sustained Release) 500mg ,Glimepiride 1mg [454]	250000	200000	240000
409	455	Metformin Hydrochloride (Sustained Release) and Glimepiride Tablets (Metformin Hydrochloride(Sustained Release) 500 mg, Glimepiride 2mg) [455]	250000	200000	240000
410	456	Glimepiride, Pioglitazone and Metformin Hydrochloride (Sustained release) Tablets Each Tablet contains Glimepiride 2mg, Pioglitazone 15 mg, Metformin Hydrochloride (Sustained Release) 500 mg [456]	350000	300000	360000
411	603	Glilclazide and Metformin Tablets (Glilclazide 80 mg and Metformin HCL 500 mg) [603]	30000	30000	36000
412	605	Medroxyprogesterone acetate Tablets IP 10 mg [605]	500	500	600
413	607	Thyroxine Tablets IP 50 mcg [607]	50000	40000	48000
414	682	Tenagliptin Tablet 20mg [682]	100000	100000	120000
415	303	Human Anti D Immunoglobulin Injection 300mcg (IM use) [303]	1500	1200	1440
416	304	Human Anti D Immunoglobulin 150 mcg [304]	50	50	60
417	305	Human Rabies Immunoglobulin Inj 150 IU/ ml [305]	500	500	600
418	306	Rabies Vaccine Human (Cell Culture) IP (Intradermal) 2.5 IU [306]	2500	700	840
419	307	Rabies Vaccine Human (Cell Culture) IP (Intramuscular) 2.5 IU/ dose [307]	12000	7000	8400
420	308	Snake Venum Anti Serum IP (Lyophilized)Polyvalent Anti Snake Venum,Serum Enzyme Refined.Contain purified equine globulins.1 ml of serum neutralizes 0.6 mg of cobra venum,0.45 mg of common kralte(Bungaras)venum(Details In RC) [308]	3000	3000	3600
421	309	Tetanus Immunoglobulin 250 IU/ Vial [309]	1200	1200	1440
422	310	Tetanus Vaccine (adsorbed) IP 5 ml vial [310]	3500	3000	3600
423	408	Rabies Antiserum IP (Equine) 300 units per ml contains equine anti-rabies immunoglobulin fragments (I.M./SC use) [408]	50	50	60
424	480	Diphtheria Antitoxin 10000 IU [480]	10	10	12
425	311	Atracurium Inj 10 mg/ml [311]	200	200	240
426	312	Glycopyrrolate Inj USP 0.2 mg/ml [312]	1100	1100	1320
427	313	Midazolam Inj IP 1 mg/ml [313]	5000	3000	3600
428	314	Neostigmine Inj IP 0.5 mg/ml [314]	2000	2000	2400
429	316	Neostigmine Tab IP 15 mg [316]	500	500	600
430	317	Succinylcholine Inj. IP 50 mg/ml (IV use) [317]	100	100	120

431	318	Valethamate Bromide Inj 8mg / ml [318]	30000	30000	36000
432	419	Vecuronium Bromide for Injection 4mg (Freeze Dried) [419]	50	50	60
433	610	Chlorzoxazone , Diclofenac sodium & Paracetamol Tablets (Chlorzoxazone 250mg , Diclofenac sodium 50mg Paracetamol 325 mg) [610]	350000	350000	420000
434	638	Neostigmine Injection IP 2.5mg/5ml [638]	10000	5000	6000
435	241	Tropicamide eye drop IP 1o/o [241]	10000	5000	6000
436	319	Atropine Eye Ointment IP 1% [319]	100	100	120
437	320	Atropine Sulphate Ophthalmic Solution USP 1% [320]	100	100	120
438	321	Chloramphenicol Eye Drops IP 0.5 0/0 [321]	6000	6000	7200
439	322	Ciprofloxacin Eye Drops 0.3 o/o w/v [322]	50000	50000	60000
440	323	Ciprofloxacin Ophthalmic Ointment USP 0.3% [323]	5000	5000	6000
441	324	Hydroxypropylmethyl cellulose solution 20 mg/ ml [324]	1000	1000	1200
442	326	Pilocarpine Eye Drops IP 2 o/o [326]	2000	1500	1800
443	330	Tobramycin and Dexamethasone Ophthalmic Suspension USP 0.3 o/o +0.1 o/o [330]	35000	35000	42000
444	331	Tobramycin Eye Drops 0.3% [331] [331]	30000	24000	28800
445	332	Tobramycin Ophthalmic Ointment USP 0.3% [332]	5000	5000	6000
446	421	Flurbiprofen Sodium Ophthalmic Solution IP 0.03 o/o w/v [421]	3000	3000	3600
447	423	Hyaluronidase Injection IP Each vial contains Hyaluronidase IP 1500 I.U. [423]	1000	1000	1200
448	424	Lidocaine HCl Topical Solution USP 4% [424]	2000	2000	2400
449	425	Fluconazole Eye Drops 0.3% [425]	100	100	120
450	484	Timolol Eye Drops IP 0.5 o/o w/v [484]	3000	3000	3600
451	485	Homatropine Eye Drops IP 2% [485]	100	100	120
452	486	Travoprost Eye Drops IP 0.004 o/o [486]	2000	2000	2400
453	487	Brimonidine Tartrate & Timolol Maleate Eye Drops 0.15% + 0.5% [487]	2500	2500	3000
454	613	Carboxymethylcellulose Eye drops 0.5% [613]	10000	10000	12000
455	614	Phenylephrine Hydrochloride ophthalmic solution USP/Phenylephrine Eye Drops BP 5% [614]	100	100	120
456	333	Isoxsuprine Inj IP 5 mg/ml [333]	50	50	60
457	334	Isoxsuprine Tab IP 20 mg [334]	3000	3000	3600
458	335	Methylethergometrine Inj IP 0.2 mg/ml [335]	12000	12000	14400
459	336	Methylethergometrine Tab IP 0.125 mg [336]	15000	15000	18000
460	337	Misoprostol Tab IP 200 mcg [337]	15000	15000	18000
461	338	Oxytocin Inj IP 5 IU/ml [338]	50000	50000	60000
462	615	Mifepristone Tab IP 200mg [615]	5000	500	600
463	339	Alprazolam Tab IP 0.25 mg [339]	250000	200000	240000
464	340	Alprazolam Tab IP 0.5mg [340]	250000	200000	240000
465	341	Amitriptyline Tab IP 25mg Film Coated [341]	25000	25000	30000
466	342	Chlordiazepoxide Tablets IP 10mg [342]	5000	5000	6000
467	343	Chlorpromazine Tablets IP 100 mg (Coated Tablet) [343]	6000	6000	7200
468	344	Chlorpromazine Tablets IP 25 mg (Sugar Coated) [344]	15000	15000	18000
469	345	Chlorpromazine Tablets IP 50 mg (Coated Tablets) [345]	10000	10000	12000
470	346	Chlorpromazine Inj. IP 25mg/ml [346]	500	300	360
471	349	Diazepam Inj IP 10mg/2ml (1M/IV use) [349]	7000	7000	8400
472	350	Diazepam Tab IP 5 mg [350]	30000	30000	36000
473	352	Fluoxetine Cap IP 20 mg [352]	15000	15000	18000
474	353	Haloperidol Inj IP 5 mg/ml [353]	2000	1000	1200
475	354	Haloperidol Tab IP 1.5 mg [354]	500	500	600
476	355	Haloperidol Tab IP 5 mg [355]	15000	15000	18000
477	356	Imipramine Tab IP 25 mg (Coated Tab) [356]	10000	8000	9600

478	357	Imipramine Tab IP 75 mg (Coated) [357]	5000	5000	6000
479	358	Lithium Carbonate Tab IP 300 mg [358]	10000	10000	12000
480	359	Lorazepam Inj 2 mg/ml [359]	5000	2000	2400
481	360	Olanzapine Tab IP 5 mg [360]	20000	20000	24000
482	361	Risperidone Tab 2mg [361]	20000	20000	24000
483	362	Risperidone Tab 1 mg [362]	20000	20000	24000
484	363	Sertraline Tab 50 mg [363]	12000	12000	14400
485	364	Trifluoperazine Tab IP 5 mg Coated [364]	10000	10000	12000
486	678	Clonazepam Tablet 0.5 mg [678]	30000	30000	36000
487	365	Aminophylline Inj IP 25 mg/ml [365]	15000	15000	18000
488	366	Beclomethasone Inhalation IP 200 mcg/dose [366]	10000	10000	12000
489	367	Budesonide Nebullizer Suspension 0.25mg/ml [367]	5000	5000	6000
490	368	Cough Syrup Each 5 ml contains Chlorpheniramine Maleate IP 3 mg, Ammonium Chloride 130 mg, Sodium Citrate 65 mg, Menthol 0.5 mg, Syrup Q.S. [368]	200000	200000	240000
491	369	Ipratropium Bromide Nebulizer Solution 250 mcg/ ml [369]	2000	1500	1800
492	370	Salbutamol Tablet IP 4 mg [370]	200000	200000	240000
493	371	Salbutamol Inhalation 100 mcg /dose [371]	15000	12000	14400
494	372	Salbutamol Nebuliser solution BP 5 mg/ml [372]	5000	4000	4800
495	373	Salbutamol Tab IP 2 mg [373]	10000	10000	12000
496	374	Theophylline and Etofylline Injection (Anhydrous Theophylline 50.6mg + Etofylline 169.4 mg) [374]	75000	75000	90000
497	375	Theophylline and Etofylline Tablets (Theophylline IP 23mg + Etofylline IP 77 mg) [375]	300000	300000	360000
498	376	Theophylline Tablet 400mg Sustained Release/ Controlled Release (Theophylline Prolonged Released Tablet IP) [376]	150000	150000	180000
499	432	Salbutamol Syrup IP 2mg/ 5ml [432]	30000	30000	36000
500	440	Dextromethorphan HBr Syrup IP 13.5mg / 5ml [440]	150000	150000	180000
501	442	Saline Nasal Solution (Drops) (Sodium chloride 0.65 o/o) [442]	20000	20000	24000
502	617	Budesonide Powder for Inhalation 200 mcg [617]	7000	7000	8400
503	618	Ipratropium Powder For Inhalation IP 40 mcg [618]	1000	1000	1200
504	619	Terbutaline Tablets IP 2.5 mg [619]	2000	2000	2400
505	620	Xylometazoline Nasal Drops IP 0.1% [620]	5000	5000	6000
506	377	Compound Sodium Lactate Inj. IP [377]	225000	180000	216000
507	378	Dextrose Inj IP 25% w/v [378]	25000	20000	24000
508	379	Dextrose Inj IP 10% [379]	25000	25000	30000
509	380	Dextrose Inj IP 5% [380]	200000	120000	144000
510	381	Multiple Electrolytes and Dextrose Injection Type I IP (Electrolyte P Injection) [381]	15000	15000	18000
511	382	Multiple Electrolytes and Dextrose Injection Type III IP Electrolyte M Injection (I.V.) [382]	15000	15000	18000
512	383	Potassium Chloride Inj. 0.15 gm/ml [383]	500	500	600
513	384	Potassium chloride Oral Solution U.S.P 500mg/ 5ml [384]	1500	1500	1800
514	385	Sodium Chloride and Dextrose Injection IP 0.9 o/o + 5 o/o [385]	100000	72000	86400
515	386	Sodium Chloride Inj IP 500 ml [386]	75000	72000	86400
516	621	Sodium Chloride Injection IP 100 ml [621]	25000	25000	30000
517	576	Tamsulosin HCl Tablets/capsule 0.4 mg [576]	35000	35000	42000
518	579	Flavoxate Tablets IP/BP 200 mg (Coated Tablet) [579]	18000	18000	21600
519	543	Cinnarizine Tablets IP 25 mg [543]	65000	65000	78000
520	544	Cinnarizine Tablet IP 75 mg [544]	30000	30000	36000
521	387	Ascorbic Acid Tab IP 500 mg [387]	100000	100000	120000
522	388	Calcium Gluconate Inj IP 10% (IV use) [388]	10000	7000	8400

523	390	Ferrous Sulphate with Folic Acid Tab IP Each film coated Tab. Containing Dried Ferrous Sulphate IP-equiv 100 mg Elemental Iron and Folic Acid IP 0.5 mg [390]	1200000	1200000	1440000
524	391	Ferrous Sulphate with Folic Acid Tab (Paediatric) IP Each film coated Tab. Containing Dried Ferrous Sulphate IP-equivalent to 20mg Elemental Iron and Folic Acid IP-100 mcg [391]	25000	25000	30000
525	392	Folic Acid Tab IP 5 mg [392]	150000	150000	180000
526	393	Multivitamin Drops each ml contains Vit A 5000 IU, Vit D3 300 IU, Vit B1 1mg, Riboflavine Phosphate Sodium 2mg, D-Panthenol 2.5mg, Niacinamide 10mg, Pyridoxine HCL 1mg, Cyanocobalamin 1mcg, Lysine HCL 10mg [393]	30000	24000	28800
527	394	Multivitamin Tablets NFI Formula Sugar coated Vit A 2500 IU Vit B1-2mg Vit-B6-0.5mg Vit-C-50mg Calcium Pantothenate-1mg Vit-D3-200IU Vit-B2-2 mg Niacinamide-25mg Folic Acid-0.2 mg [394]	500000	400000	480000
528	395	Vitamin B Complex Inj NFI [395]	2000	2000	2400
529	397	Vitamin B complex tablet NFI (propylactic) B1 2mg B2-2mg B6- 0.5mg Niacinamide 25mg Calcium pantothenate 1mg (With appropriate overages) [397]	500000	500000	600000
530	409	Vitamin A Paediatric Oral Solution IP(Vitamin A Concentrate Oil IP)Each ml Contains Vitamin A 100000 IU [409]	20	20	24
531	441	Calcium and Vitamin D3 Suspension (Each 5 ml contains Calcium Carbonate equivalent to elemental Calcium 250 mg, Vitamin D3 125 IU) [441]	30000	30000	36000
532	448	Iron and Folic Acid Suspension. Each 5ml contains Ferrous Fumerate equivalent to elemental Iron 100mg, Folic Acid 500 mcg [448]	30000	30000	36000
533	472	Zinc Sulphate Dispersible Tablets IP Elemental Zinc 10 mg [472]	100000	100000	120000
534	488	Iron Sucrose Injection USP/BP 20mg/ml (For IV use) each ml contains Ferric Hydroxide in complex with Sucrose equiv. to elemental Iron 20 mg [488]	10000	10000	12000
535	622	Calcium with Vitamin D Tablets USP /Calcium and Colecalciferol Tablets BP(Elemental Calcium 500 mg, Vitamin D3-250 IU) (Non-Chewable) [622]	800000	600000	720000
536	623	Cholecalciferol granules 60,000 IU /gm [623]	10000	10000	12000
537	624	Mecobalamin Inj 500 mcg/ml [624]	10000	10000	12000
538	626	Pyridoxine Tablet IP 10 mg [626]	6000	6000	7200
539	627	Pyridoxine Tablet IP 40mg [627]	7000	7000	8400
540	629	Thiamine Tablets IP 100 mg [629]	7000	7000	8400
541	630	Calcitriol Capsules IP 0.25 mcg [630]	5000	5000	6000
542	652	Methyl Cobalmine Tablet 500mcg [652]	10000	10000	12000
543	653	Methyl Cobalmine Tablet 1500mcg [653]	10000	10000	12000
544	676	Vitamin D3 Oral Solution 60000 IU [676]	100	100	120
545	398	Black Disinfectant Fluid (Phenyl) As per Schedule O Grade III [398]	2000	1800	2160
546	399	Conc Haemodialysis Fluid B.P Acetate concentrate 10 Litre Can [399]	2000	1000	1200
547	401	Peritoneal Dialysis Solution IP [401]	0	0	0
548	402	Sodium Bicarbonate Inj IP 7.5% w/v [402]	10000	8000	9600
549	404	Water for Inj IP [404]	1000000	600000	720000
550	635	Surfactant for intratretcheal instillation (natural bovine lung surfactant) [635]	0	0	0
551	687	Concentrated Solution for Haemodialysis BP Sodium Hydrogen Carbonate Concentrate In 10 Litre Cans [687]	0	0	0
552	R1	Absorbable Surgical Suture (Sterile Catgut) BP/USP Needled Suture Chromic(3/8 Cir RB Needle 40 mm Length 76 cm) Size -1/0 [R1]	3000	3000	3600
553	R2	Absorbable Surgical Suture (Sterile Catgut) BP/USP Needled Suture Chromic(1/2 Cir RB Needle 20 mm Length 76 cm) Size -3/0 [R2]	1000	1000	1200
554	R3	Absorbable Surgical Suture (Sterile Catgut) BP/USP Needled Suture Chromic(1/2 Cir RB Needle 30 mm Length 76 cm) Size -2/0 [R3]	2000	2000	2400

555	R4	Absorbable Surgical Suture (Sterile Catgut) BP/USP Needled Suture Chromic(1/2 Cir RB Needle 30 mm Length 76 cm) Size -1/0 [R4]	0	0	0
556	R5	Absorbable Surgical Suture (Sterile Catgut) BP/USP Needled Suture Chromic(1/2 Cir RB Needle 40mm Length 76 cm) Size -1/0 [R5]	6000	4000	4800
557	R6	Absorbable Surgical Suture (Sterile Catgut) BP/USP Needled Suture Chromic(3/8 Cir RB Needle 30 mm Length 76 cm) Size-2/0 [R6]	0	0	0
558	R7	Absorbable Surgical Suture (Sterile Catgut) BP/USP Needled Suture Chromic(1/2 Cir RB Needle 45 mm Length 100 cm) Size-1 [R7]	12000	12000	14400
559	R9	Absorbable Surgical Suture (Synthetic) Sterilised Needled(Braided) Coated Polyglactin /Polyglycolic Acid / Poly(Glycolide-co-L-lactide)Size - 3/0 1/2Cir RB Needle 20mm length 70 cm [R9]	1000	600	720
560	R10	Absorbable Surgical Suture (Synthetic) Sterilised Needled (Braided) Coated Polyglactin /Polyglycolic Acid / Poly(Glycolide-co-L-lactide)Size- 2/0 1/2 Cir RB Needle 30mm length 90 cm [R10]	1000	600	720
561	R11	Absorbable Surgical Suture (Synthetic) Sterilised Needled(Braided) Coated Polyglactin /Polyglycolic Acid / Poly(Glycolide-co-L-lactide)1/2 Cir RB Needle Size-1/0 30mm length 90 cm [R11]	2000	2000	2400
562	R13	Absorbable Surgical Suture (Synthetic) Sterilised Needled(Braided) Coated Polyglactin /Polyglycolic Acid / Poly(Glycolide-co-L-lactide)Size-1 1/2 Cir RB Needle40mm length 90 cm [R13]	2000	2000	2400
563	R16	Absorbable Surgical Suture (Synthetic) Sterilised Needled (Braided) Coated Polyglactin /Polyglycolic Acid / Poly(Glycolide-co-L-lactide)Size- 2/0 1/2 Cir RB Needle 40mm L 90cm [R16]	0	0	0
564	R17	Absorbable Surgical Suture (Synthetic) Sterilised Needled(Braided) Coated Polyglactin /Polyglycolic Acid / Poly(Glycolide-co-L-lactide)Size- 1/0(1/2 Cir RB Needle 40mm length 90 cm) [R17]	1000	1000	1200
565	R76	Chromic catgut suture(3/8 Cir Cutting Needle 16 mm, Suture Length 76 cm) Size 5/0 (Details In RC) [R76]	0	0	0
566	R77	Chromic catgut suture(3/8 Cir Cutting Needle 8 mm, Suture Length 35 cm) Size 6/0 (Details In RC) [R77]	0	0	0
567	R80	Chromic catgut suture(3/8 Cir Cutting Needle 19 mm needle, Suture Length 76 cm) Size 4/0 (Details in RC) [R80]	0	0	0
568	R20	NON ABSORBABLE SURGICAL SUTURE, STERILISED NEEDLED BLACK BRAIDED Silk Size 3/0(1/2 Cir RB Needle 20mm, Length 76 cm) [R20]	2400	2400	2880
569	R21	NON ABSORBABLE SURGICAL SUTURE, STERILISED NEEDLED BLACK BRAIDED SILK Size 3/0(3/8Cir Reverse Cutting Needle 26mm, Length 76 cm) [R21]	10000	10000	12000
570	R22	NON ABSORBABLE SURGICAL SUTURE, STERILISED NEEDLED BLACK BRAIDED Silk Size 2/0(3/8Cir Reverse Cutting Needle 45mm, Length 76 cm) [R22]	10000	10000	12000
571	R23	NON ABSORBABLE SURGICAL SUTURE, STERILISED NEEDLED POLYAMIDE MONOFILAMENT BLACK (NYLON) Size 8/0 (3/8 Cir Micropoint Round Body ,6mm Length 38 cm) [R23]	0	0	0
572	R27	NON ABSORBABLE SURGICAL SUTURE, STERILISED NEEDLED POLYAMIDE MONOFILAMENT BLACK (NYLON)Size 2/0 (3/8 Cir R Cutting Needle 45mm Length 70 cm.) [R27]	2500	2500	3000
573	R28	NON ABSORBABLE SURGICAL SUTURE, STERILISED NEEDLED POLYAMIDE MONOFILAMENT BLACK (NYLON)Size 1/0 (3/8 Cir R Cutting Needle 45mm Length 70 cm.) [R28]	1000	1000	1200
574	R32	NON ABSORBABLE SURGICAL SUTURE, STERILISED NEEDLED MONOFILAMENT POLYPROPYLENE BLUE Size 5/0(3/8Cir RB 16 mm Needle, Length 70 cm) [R32]	0	0	0
575	R33	NON ABSORBABLE SURGICAL SUTURE, STERILISED NEEDLED MONOFILAMENT POLYPROPYLENE BLUE Size 1/0(1/2 Cir RB Needle 30mm Length 90 cm) [R33]	0	0	0
576	R34	NON ABSORBABLE SURGICAL SUTURE, STERILISED NEEDLED MONOFILAMENT POLYPROPYLENE BLUE Size 1(1/2 Cir RB Heavy Needle 45mm Length 90 cm) [R34]	0	0	0

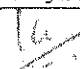
577	R44	NON ABSORBABLE SURGICAL SUTURE, STERILISED NEEDED MONOFILAMENT POLYPROPYLENE BLUE Size 3/0(3/8 Cir Cutting Needle 25mm length 45 cm) [R44]	500	224	268.8
578	R45	NON ABSORBABLE SURGICAL SUTURE, STERILISED NEEDED MONOFILAMENT POLYPROPYLENE BLUE Size 1 (1/2 Cir RB Heavy 40mm, length 90 cm) [R45]	0	0	0
579	R78	B.B Silk suture (3/8 Cir RB Needle 20mm, Length 76 cm size 4/0 (Details In RC) [R78]	20	20	24
580	R64	ABSORBABLE SURGICAL SUTURES STERILISED NEEDED Monofilament Polyglactone / Polyglyconate Size 3/0 (3/8 Circle Cutting 25mm Needle, Suture Length of 70cm) [R64]	300	300	360
581	R67	Absorbable Surgical Suture (Synthetic) Sterilised Needled Suture Monofilament Polydioxanone Violet Size 1/0(1/2 Circle RB 30mm Needle, Length 70cm) [R67]	0	0	0
582	R68	Absorbable Surgical Suture (Synthetic) Antibacterial coated sterilised needled (Braided coated Polyglactin/ Polyglycolic Acid violet) Size 1 1/2 Circle CT round bodied 40mm, GS needle, suture length 90 cm [R68]	9000	9000	10800
583	R69	Absorbable Surgical Suture (Synthetic) Antibacterial with sterilised needled (Braided coated Polyglactin/ Polyglycolic Acid violet) Size 1/0 1/2 circle CT round bodied 40mm, GS needle, suture length 90 cm [R69]	6000	6000	7200
584	R70	Absorbable Surgical Suture (Synthetic) Antibacterial with sterilised needled suture (Braided coated Polyglactin / Polyglycolic Acid violet) Size 2/0 1/2 circle round bodied 30mm, suture length 90 cm [R70]	3000	3000	3600
585	R71	Absorbable Surgical Suture (Synthetic) Antibacterial with sterilised needled suture (Braided coated Polyglactin/ Polyglycolic Acid violet) Size 1 1/2 circle Reverse Cutting, OS 40mm, suture length 90 cm [R71]	3000	3000	3600
586	R72	Absorbable Surgical Suture (Synthetic) Antibacterial with sterilised needled suture (Braided coated Polyglactin / Polyglycolic Acid violet) Size 1/0 1/2 circle Reverse Cutting 36mm, OS needle, suture length 90 cm [R72]	3000	3000	3600
587	R73	Absorbable Surgical Suture (Synthetic) Antibacterial with sterilised needled suture (Braided coated Polyglactin/ Polyglycolic Acid violet) Size 3/0 1/2 circle round bodied 20mm, suture length 70 cm [R73]	3000	3000	3600
588	R74	Absorbable Surgical Suture (Synthetic) Antibacterial with sterilised needled suture (Braided coated Polyglactin/ Polyglycolic Acid violet) Size 3/0 3/8 circle R Cutting, PS-1, 24mm, suture length 70 cm [R74]	6000	6000	7200
589	S1	Absorbable Gelatin Sponge 80 x 50x 10mm (Details in RC) [S1]	1000	300	360
590	S2	Absorbent Cotton Wool IP 500 gm [S2]	6000	6000	7200
591	S3	Asepto Syringe with Transparent Bulb Sterile, 60 ml [S3]	2	2	3
592	S4	Blood Administration Set Blood Transfusion Set (Details in RC) [S4]	50000	50000	60000
593	S5.a	Gloves Size 6.5 Inches, Powdered (Disposable Sterile Surgical Rubber Gloves) (Details in RC) [S5.a]	80000	50000	60000
594	S5.b	Gloves Size 6.5 Inches, Powder free (Disposable Sterile Surgical Rubber Gloves) (Details in RC) [S5.b]	80000	50000	60000
595	S6.a	Gloves Size 7 Inches, Powdered (Disposable Sterile Surgical Rubber Gloves) (Details in RC) [S6.a]	80000	50000	60000
596	S6.b	Gloves Size 7 Inches, Powder free (Disposable Sterile Surgical Rubber Gloves) (Details in RC) [S6.b]	50000	30000	36000
597	S7.a	Gloves Size 7.5 Inches, Powdered (Disposable Sterile Surgical Rubber Gloves) (Details in RC) [S7.a]	50000	36000	43200
598	S7.b	Gloves Size 7.5 Inches, Powder free (Disposable Sterile Surgical Rubber Gloves) (Details in RC) [S7.b]	50000	36000	43200
599	S8.a	Suction Catheter, Sterile. Size: FG 5 (Details in RC) [S8.a]	50	50	60
600	S8.b	Suction Catheter, Sterile. Size: F G-6 (Details in RC) [S8.b]	50	50	60
601	S8.c	Suction Catheter, Sterile. Size: F G-8 (Details in RC) [S8.c]	50	50	60
602	S8.d	Suction Catheter, Sterile. Size: F G-10 (Details in RC) [S8.d]	50	50	60
603	S8.e	Suction Catheter, Sterile. Size: F G-12 (Details in RC) [S8.e]	70	70	84
604	S8.f	Suction Catheter, Sterile. Size: F G-14 (Details in RC) [S8.f]	1200	1200	1440

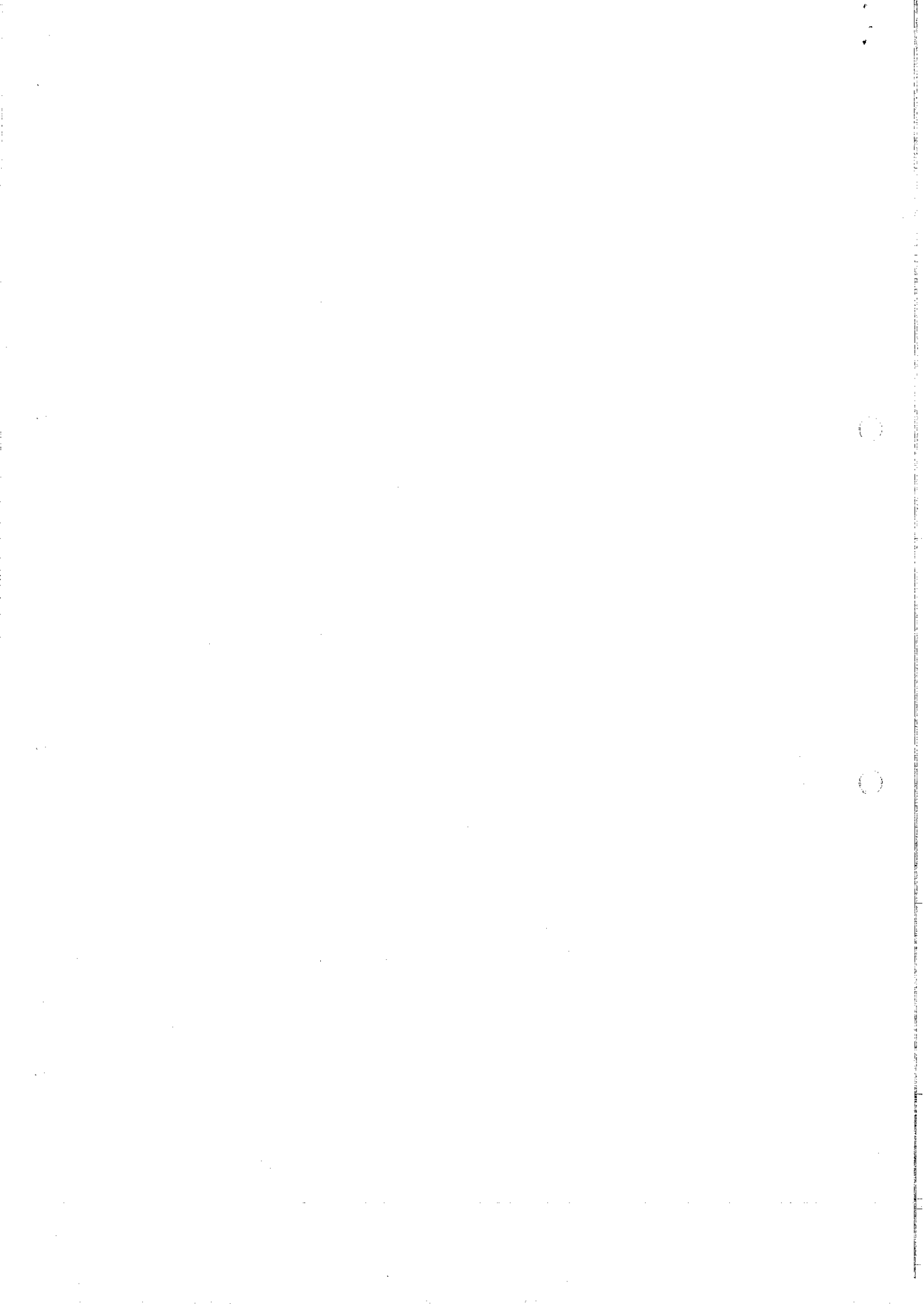
605	S8.g	Suction Catheter, Sterile. Size: F G-16 (Details in RC) [S8.g]	1500	1500	1800
606	S8.h	Suction Catheter, Sterile. Size: F G-18 (Details in RC) [S8.h]	1100	1100	1320
607	S8.i	Suction Catheter, Sterile. Size: F G-20 (Details in RC) [S8.i]	50	50	60
608	S8.j	Suction Catheter, Sterile. Size: F G-22 (Details in RC) [S8.j]	1100	1100	1320
609	S9.a	Catheter, Size 8 (Foleys Balloon Catheter Sterile, 2 way for Urinary Drainage, Single Use,) Silicon coated natural Latex material (Details in RC) [S9.a]	30	30	36
610	S9.b	Catheter, Size 10 (Foleys Balloon Catheter Sterile, 2 way for Urinary Drainage, Single Use,) Silicon coated natural Latex material (Details in RC) [S9.b]	70	70	84
611	S9.c	Catheter, Size 16 (Foleys Balloon Catheter Sterile, 2 way for Urinary Drainage, Single Use,) Silicon coated natural Latex material (Details in RC) [S9.c]	50000	50000	60000
612	S9.d	Catheter, Size 18 (Foleys Balloon Catheter Sterile, 2 way for Urinary Drainage, Single Use,) Silicon coated natural Latex material (Details in RC) [S9.d]	5000	5000	6000
613	S9.e	Catheter, Size 20 (Foleys Balloon Catheter Sterile, 2 way for Urinary Drainage, Single Use,) Silicon coated natural Latex material (Details in RC) [S9.e]	200	200	240
614	S9.f	Catheter, Size 22 (Foleys Balloon Catheter Sterile, 2 way for Urinary Drainage, Single Use,) Silicon coated natural Latex material (Details in RC) [S9.f]	50	50	60
615	S9.g	Catheter, Size 24 (Foleys Balloon Catheter Sterile, 2 way for Urinary Drainage, Single Use,) Silicon coated natural Latex material (Details in RC) [S9.g]	0	0	0
616	S10.a	Infant Feeding Tube Size 10FG (Details in RC) [S10.a]	100	100	120
617	S10.b	Infant Feeding Tube Size 8FG (Details in RC) [S10.b]	200	200	240
618	S10.c	Infant Feeding Tube Size 5FG (Details in RC) [S10.c]	1700	1700	2040
619	S11	Perfusion Set with Airway and Needle, (Adult Use) Sterile Disposable (Details in RC) [S11]	300000	300000	360000
620	S12	Perfusion Set (Infusion set) with Airway and Needle (Paediatric Use) Sterile Disposable (Details in RC) [S12]	10000	10000	12000
621	S13	Infusion Set with Microdrip, (I.V.) Sterile Disposable (Details in RC) [S13]	15000	15000	18000
622	S14	Insulin syringe (40 units) with (fixed) 30 G needle Shall conform to IS 12227 [S14]	20000	20000	24000
623	S15.a	Sterile Disposable (Single Use) Teflon/PTFE I.V. Cannula with integrated 3 Way stop cock Size 16G (Details in RC) [S15.a]	3200	3200	3840
624	S15.b	Sterile Disposable (Single Use) Teflon / PTFE I.V. Cannula with integrated 3 Way stop cock, Size 18G (Details in RC) [S15.b]	25000	20000	24000
625	S15.c	Sterile Disposable (Single Use) Teflon/PTFE I.V. Cannula with integrated 3 Way stop cock, Size 20 G (Details in RC) [S15.c]	150000	120000	144000
626	S15.d	Sterile Disposable (Single Use) Teflon/PTFE I.V. Cannula with integrated 3 Way stop cock, Size 22G (Details in RC) [S15.d]	150000	100000	120000
627	S15.e	Sterile Disposable (Single Use) Teflon/ PTFE I.V. Cannula without port Size 24G (Details in RC) [S15.e]	50000	40000	48000
628	S16	Mucus Extractor Sterile (Details in RC) [S16]	25000	25000	30000
629	S17.a	Nasal Oxygen Set, Twin Bore All Sizes Adult (Details in RC) [S17.a]	5000	2000	2400
630	S17.b	Nasal Oxygen Set, Twin Bore All Sizes Paediatrics (Details in RC) [S17.b]	200	200	240
631	S18	Paper Adhesive Plaster 1 inch X 9.0 mts (with cutter) Non woven adhesive tape [S18]	25000	20000	24000
632	S19	Paper Adhesive Plaster 2 inch X 9.0 mts (with cutter) Non Woven Adhesive Tape [S19]	25000	20000	24000
633	S20	Paper Adhesive Plaster 3 inch X 9.0 mts (with cutter) Non woven adhesive tape [S20]	15000	15000	18000
634	S21	Plaster of Paris Bandage 15cm X 2.7 mts/Roll [S21]	10000	10000	12000
635	S22	Plaster of Paris Bandage 10cm X 2.7mts [S22]	10000	10000	12000
636	S23.a	Ryles Tube / Nasogastric Tube Size: 10 (Details in RC) [S23.a]	50	50	60
637	S23.b	Ryles Tube / Nasogastric Tube Size: 12 (Details in RC) [S23.b]	50	50	60
638	S24.a	Ryles Tube / Nasogastric Tube Size: 14 (Details in RC) [S24.a]	100	100	120
639	S24.b	Ryles Tube / Nasogastric Tube Size: 16 (Details in RC) [S24.b]	12000	8000	9600

640	S24.c	Ryles Tube / Nasogastric Tube Size: 18 (Details In RC) [S24.c]	2000	2000	2400
641	S25.a	Scalp Vein Set (Disposable) Size 18G (Details In RC) [S25.a]	100	100	120
642	S25.b	Scalp Vein Set (Disposable) Size 20G (Details In RC) [S25.b]	100	100	120
643	S25.c	Scalp Vein Set (Disposable) Size 22G (Details In RC) [S25.c]	100	100	120
644	S25.d	Scalp Vein Set (Disposable) Size 24 G (Details in RC) [S25.d]	100	100	120
645	S26	Syringe 2 ml Hypodermic with Needle attached 24G, Sterile, Single Use Disposable (Details in RC) [S26]	250000	200000	240000
646	S27	Syringe 5 ml Hypodermic with Needle attached 24G, Sterile, Single Use Disposable (Details in RC) [S27]	600000	400000	480000
647	S28	Syringe 10 ml Hypodermic with Needle attached 22G, Sterile, Single Use Disposable (Details in RC) [S28]	300000	200000	240000
648	S29	Syringe 20 ml Hypodermic with Needle attached 22G, Sterile, Single Use Disposable (Details in RC) [S29]	5000	4000	4800
649	S30.a	Surgical Blade Sterile, Size 11 (Details in RC) [S30.a]	3000	3000	3600
650	S30.b	Surgical Blade Sterile, Size 15 (Details in RC) [S30.b]	1500	1500	1800
651	S30.c	Surgical Blade Sterile, Size 22 (Details in RC) [S30.c]	10000	10000	12000
652	S31	Suture Needles Curved 1/2 Circle Round Body Assorted Size 11-15 (Details in RC) [S31]	1020	1020	1224
653	S32	Suture Needles Curved 1/2 Circle Round Body Assorted Size 1-5 (Details in RC) [S32]	0	0	0
654	S33	Suture Needles Curved 1/2 Circle Round Body Assorted Size 16-20 (Details in RC) [S33]	500	500	600
655	S34	Suture Needles Curved 1/2 Circle Round Body Assorted Size 6-10 (Details in RC) [S34]	500	500	600
656	S35	Suture Needles Curved And Cutting 1/2 Circle Cutting Size 6-10 (Details in RC) [S35]	500	500	600
657	S36	Suture Needles Curved And Cutting 1/2 Circle Size 11-15 (Details in RC) [S36]	500	500	600
658	S37	Suture Needles Curved And Cutting 1/2 Circle Size 16-20 (Details in RC) [S37]	0	0	0
659	S38	Suture Needles Curved And Cutting Size 1-5 (Details in RC) [S38]	0	0	0
660	S39.a	Sterile Disposable Spinal Needle for Single Use. 22G x 3 1/2 Inch (Details in RC) [S39.a]	2000	2000	2400
661	S39.b	Sterile Disposable Spinal Needle for Single Use. 25G x 3 1/2 Inch (Details in RC) [S39.b]	3000	3000	3600
662	S40	Urine Collecting Bag, Disposable 2000 ml (Details in RC) [S40]	50000	36000	43200
663	S43.a	Endotracheal Tube, Plain - Size 2.5 (Details in RC) [S43.a]	600	300	360
664	S43.b	Endotracheal Tube, Plain - Size 3 (Details in RC) [S43.b]	600	300	360
665	S43.c	Endotracheal Tube, Plain - Size 3.5 (Details in RC) [S43.c]	100	100	120
666	S43.d	Endotracheal Tube, Plain - Size 4 (Details in RC) [S43.d]	20	20	24
667	S43.e	Endotracheal Tube, Plain - Size 4.5 (Details in RC) [S43.e]	20	20	24
668	S43.f	Endotracheal Tube, Plain - Size 5 (Details in RC) [S43.f]	20	20	24
669	S43.g	Endotracheal Tube, Plain - Size 5.5 (Details in RC) [S43.g]	20	20	24
670	S43.h	Endotracheal Tube, Plain - Size 6 (Details in RC) [S43.h]	10	10	12
671	S43.i	Endotracheal Tube, Plain - Size 6.5 (Details in RC) [S43.i]	10	10	12
672	S43.j	Endotracheal Tube, Plain - Size 7 (Details in RC) [S43.j]	25	25	30
673	S43.k	Endotracheal Tube, Plain - Size 7.5 (Details in RC) [S43.k]	50	50	60
674	S43.l	Endotracheal Tube, Plain - Size 8 (Details in RC) [S43.l]	25	25	30
675	S43.m	Endotracheal Tube, Plain - Size 8.5 (Details in RC) [S43.m]	25	25	30
676	S44.a	Endotracheal Tube, Cuffed - Size 4 (Details in RC) [S44.a]	50	50	60
677	S44.b	Endotracheal Tube, Cuff - Size 4.5 (Details in RC) [S44.b]	50	50	60
678	S44.c	Endotracheal Tube, Cuff - size 5 Details in RC [S44.c]	50	50	60
679	S44.d	Endotracheal Tube, Cuff - size 6 (Details in RC) [S44.d]	50	50	60
680	S44.e	Endotracheal Tube, Cuff- Size 6.5 (Details in RC) [S44.e]	100	100	120
681	S44.f	Endotracheal Tube, Cuff - Size 7 (Details in RC) [S44.f]	100	100	120
682	S44.g	Endotracheal Tube, Cuff - size 7.5 (Details in RC) [S44.g]	100	100	120

683	S44.h	Endotracheal Tube, Cuff - size 8 (Details in RC) [S44.h]	100	100	120
684	S44.i	Endotracheal Tube, Cuff - size 8.5 (Details in RC) [S44.i]	100	100	120
685	S44.j	Endotracheal Tube, Cuff - size 9 (Details in RC) [S44.j]	25	25	30
686	S45	Tracheostomy Tube, Plain - All Sizes(Details in RC) [S45]	25	25	30
687	S46	Tracheostomy Tube (PVC), Cuffed - All Sizes(Details in RC) [S46]	25	25	30
688	S47.a	Abdominal Drain Kit (with Collection Bag 2000 ml Size 24 (Details in RC) [S47.a]	65	65	78
689	S47.b	Abdominal Drain Kit, Sterile, Having drainage catheter and Collection Bag (2000 ml) Size 28 (Details in RC) [S47.b]	50	50	60
690	S47.c	Abdominal Drain Kit, Sterile, Having Drainage Catheter and Collection Bag(2000) ml Size 32 (Details in RC) [S47.c]	50	50	60
691	S48	Corrugated Drainage Sheet - All sizes(Details in RC) [S48]	5	5	6
692	S73	Polypropylene Nonabsorbable Synthetic Surgical Mesh 7.6cm X 15cm OR 7.5cm X 15cm [S73]	200	200	240
693	S74	Polypropylene Nonabsorbable Synthetic Surgical Mesh 15 cm X 15 cm [S74]	0	0	0
694	S79	Sterilized Umbilical Cotton Tape width 3 mm, Length 75 cm(Details in RC) [S79]	0	0	0
695	S80	Bone Wax Sterilised [S80]	0	0	0
696	S82	Skin Graft Knife Blade (Sterile) & Handle(Details in RC) [S82]	0	0	0
697	S84.a	K Wire, length 375 mm; 1mm(Details in RC) [S84.a]	50	50	60
698	S84.b	K Wire, length 375 mm; 1.6mm(Details in RC) [S84.b]	50	50	60
699	S84.c	K Wire, length 375 mm; 1.8mm(Details in RC) [S84.c]	50	50	60
700	S85	Face Mask, Disposable(Details in RC) [S85]	100000	70000	84000
701	S86.a	Surgical Cap Disposable (For Surgeons)(Details in RC) [S86.a]	5000	5000	6000
702	S86.b	Surgical Cap, Disposable (For Nurses) (Details in RC)(Details in RC) [S86.b]	10000	10000	12000
703	S87.a	Foldable Intra Ocular lense with injector (Details in RC) 11 to 17.5 [S87.a]	0	0	0
704	S87.b	Foldable Intra Ocular lense with injector (Details in RC) 18 to 24 [S87.b]	700	700	840
705	S87.c	Foldable Intra Ocular lense with injector (Details in RC) 24.5 to 28.5 [S87.c]	700	700	840
706	S88.a	Standard PAMA Intra Ocular Lenses (Details in RC) 11 to 17.5 [S88.a]	200	200	240
707	S88.b	Standard PAMA Intra Ocular Lenses (Details in RC) 18 to 24 [S88.b]	1200	1200	1440
708	S88.c	Standard PAMA Intra Ocular Lenses (Details in RC) 24.5 to 28.5 [S88.c]	300	300	360
709	S89.a	Disposable Sterile Surgical Rubber Gloves Size 8 Inches,powdered [S89.a]	2000	2000	2400
710	S89.b	Disposable Sterile Surgical Rubber Gloves Size 8 Inches,powder free [S89.b]	2000	2000	2400
711	S90.a	Rubber Examination gloves, Non-Sterile, Extra small(Details in RC) [S90.a]	3000	3000	3600
712	S90.b	Rubber Examination gloves,size small (Details in RC) [S90.b]	5000	5000	6000
713	S90.c	Rubber Examination gloves,size Medium (Details in RC) [S90.c]	60000	50000	60000
714	S90.d	Rubber Examination gloves made of natural rubber latex, Non-Sterile, Size Large (Details in RC) [S90.d]	60000	50000	60000
715	S91	Pressure Monitoring Line / High Pressure Extension Line (Details in RC) [S91]	0	0	0
716	S92	Urine Collecting Bag for new born /Paediatric Urine Collection Bag, capacity 100ml (Details in RC) [S92]	100	100	120
717	S93	Umbilical Catheter for new born, all Sizes -(Details in RC) [S93]	0	0	0
718	S94	Umbilical cord clamp (Details in RC) [S94]	100000	80000	96000
719	S95	Absorbable Oxidized Regenerated Cellulose 2 x 3 Topical Absorbable Haemostatic Bactericidal Property(Details in RC) [S95]	50	50	60

720	S96.A	Close wound drainage device under negative pressure (closed wound suction unit) Size of bellow 800 ml, catheter size 16 (Details In RC) [S96.A]	0	0	0
721	S96.B	Close wound drainage device under negative pressure (closed wound suction unit) Size of bellow 800 ml, catheter size 18 (Details in RC) [S96.B]	0	0	0
722	S97	T-tube for common bile duct drainage, Length 20x60 cm, Size- (Details in RC) [S97]	2	2	2.4
723	S98	Bone Cement [S98]	5	5	6
724	S99.A	Sanitary Napkin Beltless(Details In RC) [S99.A]	25000	25000	30000
725	S99.B	Sanitary Pads Belt Type(Details in RC) [S99.B]	25000	25000	30000
726	S99.P	Sanitary Napkin Beltless With Wings (Details in RC) [S99.P]	50000	50000	60000
727	S100	Oxygen Mask (Adult) [S100]	5000	5000	6000
728	S101	Oxygen Mask (Pediatric) [S101]	1000	1000	1200
729	S102	Foleys Catheter No. 14 [S102]	500	500	600
730	S103	K-90 Catheter [S103]	500	500	600
731	639	Oseltamivir Capsule IP 75 mg Capsule(each Capsule Contains Oseltamivir Phosphate equivalent to Oseltamivir 75 mg) [639]	5000	5000	6000
732	640	Oseltamivir Capsule IP 45 mg Capsule(each Capsule Contains Oseltamivir Phosphate equivalent to Oseltamivir 45 mg) [640]	3000	3000	3600
733	641	Oseltamivir Capsule IP 30 mg (Each Capsule Contains Oseltamivir Phosphate equivalent to Oseltamivir 30 mg) [641]	2000	2000	2400
734	642	Oseltamivir Phosphate for Oral Suspension IP 12 mg/ml (Each ml contains 12 mg Oseltamivir base after reconstitution) [642]	200	100	120
735	642A	Oseltamivir Phosphate for Oral Suspension IP 12 mg/ml (Each ml contains 12 mg Oseltamivir base after reconstitution) [642A]	0	0	0
736	645	ACT Kit Containing 3 tablets of Artesunate(25mg each) and 1 tablet of Sulphadoxine and Pyrimethamine(250mg+12.5mg) [645]	500	300	360
737	646	ACT Kit Containing 3 tablets of Artesunate(50 mg each) and 1 tablet of Sulphadoxine and Pyrimethamine(500mg+25mg) [646]	500	300	360
738	647	ACT Kit Containing 3 tablets of Artesunate(100 mg each) and 1 tablet of Sulphadoxine and Pyrimethamine(750mg+37.5mg) [647]	200	200	240
739	648	ACT Kit Containing 3 tablets of Artesunate(150 mg each) and 2 tablet of Sulphadoxine and Pyrimethamine(500mg+25mg) [648]	500	500	600
740	649	Each Combi Blister pack: Containing 3 tablets of Artesunate(200 mg each) and 2 tablet of Sulphadoxine Pyrimethamine(750mg+37.5mg)each or 3 Tablets of Sulphadoxine Pyrimethamine(500+25)mg [649]	200	200	240
Kindly send hard copy of this page duly signed by Concerned Authority and Keeping a photo copy with the Institution					0
Authority Name and Signature:					0


 (Dr. Rajesh Pathak)
 PRINCIPAL & CONTROLLER
 Rajmata Vijayaraje Scindia Medical
 College, Bhitwara



402

List of Sutures for Annual Demand 2018-19

S. No.	Code No.	NAME / SPECIFICATION	SIZE	UNIT	Category	Annual Demand	OT Ist	MOT	GY OT	Labour Room	ORTHO WARD	
		I. ABSORBABLE SUTURES										
		I.1 Absorbable Surgical Suture (Sterile Catgut) BF/ USP,										
1	R-1	Chromic (3/8 Cir RB Needle 40mm, Suture Length 76 cm)	1/0	12 Foils	DH		3000					
2	R-2	Chromic (1/2 Cir RB Needle 20mm, Length 76 cm)	3/0	12 Foils	DH		500		150			
3	R-3	Chromic (1/2 Cir RB Needle 30mm, Length 76 cm)	2/0	12 Foils	CHC		2000					
4	R-4	Chromic (1/2 Cir RB Needle 30mm, Length 76 cm)	1/0	12 Foils	CHC							
5	R-5	Chromic (1/2 Cir RB Needle 40mm, Length 76 cm)	1/0	12 Foils	DH							
6	R-6	Chromic (3/8 RB Needle 30mm, Length 76 cm)	2/0	12 Foils	DH							
7	R-7	Chromic (1/2 Cir RB Needle 45 mm, Length 100 cm)	1	12 Foils	PHC		1000		1500	12000		
8	R-8	Chromic (3/8 Cir RCutting Needle 26mm, Length 76 cm)	3/0	12 Foils	MC			1200				
9	R-76	Chromic catgut suture(3/8 Cir RCutting Needle 16 mm, Suture Length 76 cm)	5/0	12 Foils	DH							
10	R-77	Chromic catgut suture(3/8 Cir Cutting Needle 8 mm, Suture Length 35 cm)	6/0	12 Foils	DH							
11	R-80	Chromic catgut suture(3/8 Cir R Cutting Needle 19 mm needle, Suture Length 76 cm)	4/0	12 Foils	DH							
		I.2 Absorbable Surgical Suture USP (Synthetic) Sterilised Surgical Needled Suture (Braided) Coated Polyglactin / Polyglycolic Acid / Poly(Glycolide-co- L-lactide)										
12	R-9	Absorbable Surgical Suture U.S.P. (Synthetic)1/2 Cir RB Needle 20mm, Suture length 70 cm	3/0	12 Foils	DH		1000		150			
13	R-10	Absorbable Surgical Suture U.S.P. (Synthetic) 1/2 Cir RB Needle 30mm, length 90 cm	2/0	12 Foils	DH		2000					
14	R-11	Absorbable Surgical Suture U.S.P. (Synthetic)1/2 Cir RB Needle 30mm, length 90 cm	1/0	12 Foils	DH		4000		500			

S. No.	Code No.	NAME / SPECIFICATION	SIZE	UNIT	Category	Annual Demand	OT Ist	MOT	GY OT	Labour Room	ORTHO WARD	
15	R-12	Absorbable Surgical Suture U.S.P. (Synthetic) 1/2 Cir Tapercut Needle (Heavy) 40mm, Suture length 90 cm	1	12 Foils	MC		1000					
16	R-13	Absorbable Surgical Suture U.S.P. (Synthetic) 1/2 Cir RB Needle 40mm, length 90 cm	1	12 Foils	DH		5000		3000			
17	R-14	Absorbable Surgical Suture U.S.P. (Synthetic) (1/2 Conventional Cutting 25mm needle, length 90 cm) Undyed	3/0	12 Foils	MC		1000	1200				
18	R-15	Absorbable Surgical Suture U.S.P. (Synthetic) (1/2 Cir RB Needle 20mm, length 70 cm)	4/0	12 Foils	MC		500					
19	R-16	Absorbable Surgical Suture U.S.P. (Synthetic) (1/2 Cir RB Needle 40mm, length 90 cm)	2/0	12 Foils	DH							
20	R-17	Absorbable Surgical Suture U.S.P. (Synthetic) (1/2 Cir RB Needle 40mm) length 90 cm	1/0	12 Foils	DH		1000					
21	R-18	Absorbable Surgical Suture U.S.P. (Synthetic) 3/8 Circle Cutting Needle 22mm, length 45 cm	3/0	12 Foils	MC			1200				
22	R-19	Absorbable Surgical Suture U.S.P. (Synthetic) 3/8 Circle Cutting 16mm Needle, Suture Length 70cm	4/0	12 Foils	MC							
		2 NON ABSORBABLE SURGICAL SUTURE USP,										
		2.1 BLACK - BRAIDED SILK WITH										
		NEEDLE										
23	R-20	B.B Silk (1/2 Cir RB Needle 20mm Length 76 cm	3/0	12 Foils	DH		1000		150		30	
24	R-21	B.B Silk (3/8Cir RCur Needle 26mm Length 76 cm)	3/0	12 Foils	PHC		1000	1200	24		30	
25	R-22	B.B Silk (3/8Cir RCur Needle 45mm Length 76 cm)	2/0	12 Foils	DH		4000	1200			30	
26	R-78	B.B Silk suture (3/8 Cir RB Needle 20mm, Length 76 cm	4/0	12 Foils	DH						20	
27	R-79	B.B Silk suture (3/8 Cir RB Needle 16mm, Length 76 cm	5/0	12 Foils	MC							
		2.2 POLYAMIDE MONOFILAMENT BLACK (NYLON)										
28	R-23	Polyamide (3/8 Cir Micropoint Spatulated, 6mm, Length 38 cm)	8/0	12 Foils	DH							

S. No.	Code No.	NAME / SPECIFICATION	SIZE	UNIT	Category	Annual Demand	OT Ist	MOT	GY OT	Labour Room	ORTHO WARD
29	R-24	Polyamide (3/8 Conventional Cutting Needle 16mm, Length 70 cm)	3/0	12 Foils	MC				150		
30	R-25	Polyamide (3/8 Conventional Cutting Needle 19mm, Length 60 cm.)	4/0	12 Foils	MC						
31	R-26	Polyamide (3/8 Cir slim blade Cutting Needle 15mm, Length 70 cm)	5/0	12 Foils	MC						
32	R-27	Polyamide (3/8 R Cutting Needle 45mm, Length 70 cm.)	2/0	12 Foils	DH		2000		500		15
33	R-28	Polyamide (3/8 R Cutting Needle 45mm, Length 70 cm.)	1/0	12 Foils	DH		3000				5
34	R-75	Polyamide (3/8 Cutting Edge Needle, Double arms Needle 6 mm, Suture length 35-42 cm)	10/0	12 Foils	MC						
		2.3 MONOFILAMENT POLYPROPYLENE BLUE									
35	R-29	Polypropylene (1/2 RB/ TP13 mm Double Needle, Length 75cm)	5/0	12 Foils	MC		100				
36	R-30	Polypropylene (3/8 Cir RB /Taper Point Double Needle 9.3mm, Suture Length 60 cm)	6/0	12 Foils	MC						
37	R-31	Polypropylene (3/8Cir RB /TP Double 8mm Needle, Length 60 cm)	7/0	12 Foils	MC						
38	R-32	Polypropylene (3/8Cir RB 16 mm Needle, Length 70 cm)	5/0	12 Foils	DH						
39	R-33	Polypropylene (1/2 Cir RB Needle 30mm, Length 90 cm)	1/0	12 Foils	DH						
40	R-34	Polypropylene (1/2 Cir RB Needle 45mm, Length 90 cm)	1	12 Foils	DH						
41	R-35	Polypropylene(1/2 Cir RB Double Needle 17mm, Length 90 cm)	5/0	12 Foils	MC						
42	R-36	Polypropylene (1/2 Cir Tapercut Double Needle 17mm, Length 70 cm)	4/0	12 Foils	MC						
43	R-37	Polypropylene(1/2 Cir RB Double Needle 25mm, Length 70 cm)	3/0	12 Foils	MC						
44	R-38	Polypropylene (1/2 Cir RB Needle 30mm, Length 90 cm)	2/0	12 Foils	MC						
45	R-39	Polypropylene (1/2 Cir Tapercut Double Needle 17mm, Length 90 cm)	3/0	12 Foils	MC						
46	R-40	Polypropylene (1/2 Cir Tapercut, Needle 26 mm, Length 90 cm)	2/0	12 Foils	MC						

S. No.	Code No.	NAME / SPECIFICATION	SIZE	UNIT	Category	Annual Demand	OT Ist	MOT	GY OT	Labour Room	ORTHO WARD
47	R-41	Polypropylene (3/8 Cir Conventional Cutting PC-3 Needle 15mm, Length 60cm)	6/0	12 Foils	MC						
48	R-42	Polypropylene (3/8Cir RB 13mm Double Needle, Length 60 cm)	6/0	12 foils	MC						
49	R-43	Polypropylene (1/2 Cir RB needle 16 mm, Length 70 cm)	4/0	12 Foils	MC						
50	R-44	Polypropylene (3/8 Cir Cutting Needle 25mm, length 45 cm)	3/0	12 Foils	DH						
51	R-45	Poly Propylene (1/2 Cir RB Heavy 30mm, length 100 cm)	1	12 Foils	DH						
52	R-46	Polypropylene (1/2 Cir Reverse Cutting, 45 mm Needle, Suture length 100 cm)	1	12 Foils	MC						
53	R-47	Polypropylene (3/8 Cir RB, 8mm Double Needle, Suture Length of 60 Cm)	8/0	12 Foils	MC						
54	R-48	Polypropylene(1/2 Circle Tapercut 13mm Double Needle, Length 60cm)	4/0	12 Foils	MC						
55	R-49	Polypropylene (1/2 Circle CC 13mm Double Needle, (Identical gauge Needle and Suture), Suture Length of 60cm)	5/0	12 Foils	MC						
56	R-50	Polypropylene (1/2 Circle Tapercut Double Needle 17mm Suture Length of 90cm)	2/0	12 Foils	MC						
57	R-51	Polypropylene (1/2 Cir Tapercut Double Needle 25mm, Suture Length of 90cm)	3/0	12 Foils	MC						
58	R-52	Polybutylate / Silicon Coated Polyester Braided green / blue (1/2 Cir Tapercut, 17 mm Double Needle, Suture length 75 cm)	4/0	12 Foils	MC						
59	R-53	Polybutylate Coated Polyester Braided White (1/2 Cir Tapercut, 17 mm Double Needle, Suture length 90 cm)	2/0	12 Foils	MC						10
60	R-54	Polybutylate / Silicon Coated Polyester Braided Green / blue (1/2 Cir Tapercut, 17 mm Double Needle, Suture length 90 cm)	2/0	12 Foils	MC						10
61	R-55	Polybutylate Coated with Polyester Braided (Green/ Blue) Size 2/0 with 1/2 Circle Tapercut V-5, 17mm Double armed Needle, Suture Length of 90cm with pledgets Size 6 X 3 X 1.5mm	2/0	6Foils	MC						

S. No.	Code No.	NAME / SPECIFICATION	SIZE	UNIT	Category	Annual Demand	OT Ist	MOT	GY OT	Labour Room	ORTHO WARD	
62	R-56	Polybutylate/ Silicon Coated with Polyester Braided (Green) Size 2-0 with 1/2 Circle Tapercut, 25mm Double armed Needle, Suture Length of 90cm with pledgets Size 6 X 3 X 1.5mm	2/0	6Foil	MC							
63	R-57	Coated Polyester Braided (Green / Blue) Size 3/0 with 1/2 Circle Round Body Double Needle 25mm, Suture Length 75cm	3/0	12 Foils	MC							
		3. POLYGLYCAPRONE 25/ Polyglyconate										
64	R-61	Polyglycaprone / Polyglyconate (1/2 Circle Oval RB Needle 26mm, Suture Length of 70cm)	2/0	12 Foils	MC							
65	R-62	Polyglycaprone / Polyglyconate (1/2 Circle Oval RB 26mm Contrast Needle, Suture length 70cm)	3/0	12 Foils	MC							
66	R-63	Polyglycaprone / Polyglyconate (1/2 Circle Cutting 16mm Needle, Suture length 70cm)	4/0	12 Foils	MC							
67	R-64	Polyglycaprone / Polyglyconate (3/8 Circle Cutting 25mm Needle, Suture Length of 70cm)	3/0	12 Foils	DH							
		4. MONOFILAMENT POLYDIOXANONE / Polyglyconate										
68	R-65	Absorbable Surgical Suture (Synthetic) Sterilised Needled Suture Monofilament Polydioxanone/ Polyglyconate Violet (1/2 Circle Reverse Cutting 50 mm needle, Suture Length of 90cm)	1	12 Foils	MC							
69	R-66	Absorbable Surgical Suture (Synthetic) Sterilised Needled Suture Monofilament Polydioxanone / Polyglyconate Violet (1/2 Circle RB 31mm Needle, Length of 70cm)	2/0	36Foil	MC							
70	R-67	Absorbable Surgical Suture (Synthetic) Sterilised Needled Suture Monofilament Polydioxanone / Polyglyconate Violet (1/2 Circle RB 30mm Needle, Length of 70cm)	1/0	12 Foils	DH							
		5. ANTIBACTERIAL COATED SUTURE										

S. No.	Code No.	NAME / SPECIFICATION	SIZE	UNIT	Category	Annual Demand	QT 1st	MOT	GY OT	Labour Room	ORTHO WARD
71	R-68	Absorbable Surgical Suture U.S.P. (Synthetic) Antibacterial with Antibacterial Coated sterilised needled suture (Braided coated Polyglactin / Polyglycolic Acid violet) 1/2 Circle CT round bodied 40mm, GS needle, suture length 90 cm	1	12 Foils	CHC		1000				
72	R-69	Absorbable Surgical Suture U.S.P. (Synthetic) Antibacterial with Antibacterial Coated sterilised needled suture (Braided coated Polyglactin / Polyglycolic Acid violet) 1/2 circle CT round bodied 40mm, GS needle, suture length 90 cm	1/0	12 Foils	CHC		1000				
73	R-70	Absorbable Surgical Suture U.S.P. (Synthetic) Antibacterial with Antibacterial Coated sterilised needled suture (Braided coated Polyglactin / Polyglycolic Acid violet) 1/2 circle round bodied 30mm, suture length 90 cm	2/0	12 Foils	CHC						
74	R-71	Absorbable Surgical Suture U.S.P. (Synthetic) Antibacterial with Antibacterial Coated sterilised needled suture (Braided coated Polyglactin / Polyglycolic Acid violet) 1/2 circle Reverse Cutting, OS 40mm, suture length 90 cm	1	12 Foils	CHC						
75	R-72	Absorbable Surgical Suture U.S.P. (Synthetic) Antibacterial with Antibacterial Coated sterilised needled suture (Braided coated Polyglactin / Polyglycolic Acid violet) 1/2 circle Reverse Cutting 36mm, OS needle, suture length 90 cm	1/0	12 Foils	CHC						
76	R-73	Absorbable Surgical Suture U.S.P. (Synthetic) Antibacterial with Antibacterial Coated sterilised needled suture (Braided coated Polyglactin / Polyglycolic Acid violet) size 3-0 with 1/2 circle round bodied 20mm, suture length 70 cm	3/0	12 Foils	CHC						

402

S. No.	Code No.	NAME / SPECIFICATION	SIZE	UNIT	Category	Annual Demand	OT Ist	MOT	GY OT	Labour Room	ORTHO WARD
77	R-74	Absorbable Surgical Suture U.S.P. (Synthetic) Antibacterial with Antibacterial Coated sterilised needled suture (Braided coated Polyglactin / Polyglycolic Acid violet) 3/8 circle R Cutting, PS-1, 24mm, suture length 70 cm	3/0	12 Folds	CHC						
	Category:										
	SC	0									
	PHC	2									
	CHC	11									
	DH	37									
	MCH	77									
							33100		6124		150

6/10

(Dr. Rajesh Pathak)
PRINCIPAL & CONTROLLER
Rajmata Vijayaraje Scindia Medical College,
Bhilwara

701

mail received at 3.15 pm
seen at 3.30 pm

~~22/6/19~~