



सत्यमेव जयते

राजस्थान राजपत्र  
विशेषांक

साधिकार प्रकाशित

RAJASTHAN GAZETTE  
Extraordinary

Published by Authority

भाद्र 09, गुरुवार, शाके 1945-अगस्त 31, 2023  
Bhadra 09, Thursday, Saka 1945- August 31, 2023

भाग 4 (ग)

उप-खण्ड (I)

राज्य सरकार तथा अन्य राज्य-प्राधिकारियों द्वारा जारी किये गये (सामान्य आदेशों, उप-विधियों आदि को सम्मिलित करते हुए) सामान्य कानूनी नियम।

**Department of Environment and Climate Change**  
Notification

**Jaipur, July 19, 2023**

**G.S.R.98** .-Whereas the draft notification of the Hinglot wetland, situated in village Hinglot, Tehsil Chabra, district Baran Rajasthan was published as required by rule 7 of the Wetland (Conservation and Management) Rules, 2017 read with the Environment (Protection) Act, 1986 (Central Act No. 29 of 1986), vide notification of the Department of Environment and Climate Change, number G.S.R. 40 dated 24.04.2023 in the Rajasthan Gazette, Extraordinary, Part 4 (ga), sub-part (II), inviting objections and suggestions from all persons likely to be affected thereby before expiry of the period of sixty days from the date on which the copies of the said notification were made available to the public.

And whereas, copies of the Gazette in which the said notification was published were made available to the public on the 24.04.2023.

And whereas, no objections and suggestions were received on the said Draft Notification.

Now therefore, in exercise of the powers conferred by rule 7 of the Wetland (Conservation and Management) Rules, 2017 read with provisions of the Environment (Protection) Act, 1986 (Central Act No. 29 of 1986), the State Government hereby notifies Hinglot wetland, situated in village Hinglot, Tehsil Chabra district Baran Rajasthan as a wetland and that,-

- (i) the extent of the wetland/wetland complex and its zone of influence shall be as described in Schedule-I of this notification;
- (ii) the activities prohibited within the wetland and its zone of influence shall be as listed in Schedule-II of this notification;
- (iii) the activities regulated within the wetland and its zone of influence, i.e. permitted only with permission of the State Government shall be as listed in Schedule-III of this notification. Request for permission for regulated activities may be made to the District Environment Committee headed by the District Collector; and
- (iv) the State Wetland Authority, Rajasthan shall monitor the enforcement of the provisions of this notification.

## Schedule-I

Hinglot Dam Wetland comprising of total area of **613.22** Hectare within the following boundary delineation:-

The geo-coordinates of Hinglot Dam Wetland of Baran, Rajasthan Hinglot Dam

S.no	Latitude	Longitude	S.no	Latitude	Longitude	S.no	Latitude	Longitude
1	24.56075322920	76.94232210350	42	24.54632665220	76.95733966800	83	24.54956730050	76.94884385400
2	24.56132147500	76.94305892810	43	24.54638595820	76.95647221920	84	24.54869307230	76.94883585650
3	24.56094460770	76.94387212950	44	24.54702937830	76.95580340410	85	24.54853324100	76.94789145050
4	24.56040129820	76.94465761140	45	24.54781681680	76.95533124880	86	24.54934968200	76.94751410640
5	24.56000339630	76.94553631010	46	24.54831317570	76.95453465900	87	24.55013902040	76.94714836430
6	24.55951589560	76.94636427230	47	24.54906898120	76.95400598010	88	24.55063203860	76.94664288100
7	24.55888042850	76.94705601050	48	24.54964746620	76.95334726820	89	24.54974906880	76.94648373890
8	24.55801251710	76.94732748330	49	24.55013248150	76.95254998290	90	24.54902471530	76.94691494110
9	24.55732167500	76.94749279980	50	24.55012671180	76.95160783480	91	24.54822890740	76.94727547820
10	24.55685173090	76.94827005930	51	24.54953301020	76.95212669260	92	24.54760261350	76.94798143060
11	24.55597937690	76.94833814770	52	24.54874923600	76.95259126360	93	24.54688405070	76.94853308570
12	24.55583880920	76.94756784140	53	24.54787769810	76.95270804200	94	24.54605113770	76.94856469150
13	24.55544153490	76.94697266680	54	24.54742570430	76.95350795960	95	24.54531069180	76.94802249510
14	24.55593598410	76.94614694160	55	24.54701374830	76.95433990360	96	24.54608882470	76.94773044420
15	24.55540725460	76.94555692280	56	24.54618465180	76.95455485640	97	24.54683619940	76.94722774040
16	24.55452397400	76.94571932880	57	24.54569962450	76.95515178460	98	24.54669527220	76.94677141400
17	24.55367463430	76.94599607120	58	24.54486193490	76.95486894990	99	24.54579304570	76.94674410790
18	24.55355423000	76.94523478640	59	24.54408696010	76.95443882010	100	24.54495883940	76.94705538420
19	24.55309749230	76.94545775320	60	24.54432787430	76.95387266810	101	24.54443789080	76.94692346410
20	24.55261095170	76.94598287370	61	24.54518608950	76.95368885590	102	24.54506074560	76.94622963260
21	24.55270055250	76.94672125740	62	24.54593430090	76.95316673900	103	24.54591062880	76.94605478910
22	24.55246198330	76.94727601000	63	24.54642928610	76.95244881480	104	24.54680297690	76.94608321900
23	24.55262753290	76.94822829880	64	24.54706009440	76.95202871750	105	24.54764433740	76.94603591220
24	24.55227779590	76.94895856700	65	24.54762338160	76.95141234290	106	24.54844316220	76.94615907820
25	24.55194431700	76.94810527440	66	24.54850372860	76.95142763600	107	24.54913443700	76.94560976920
26	24.55153672370	76.94800046130	67	24.54931510880	76.95100294920	108	24.54859019930	76.94524442990
27	24.55188426980	76.94881866620	68	24.54979596090	76.95021339620	109	24.54787376970	76.94478375510
28	24.55185120120	76.94974271230	69	24.54933051320	76.94994047980	110	24.54806256910	76.94423775550
29	24.55157567360	76.95063450700	70	24.54884883620	76.95049783870	111	24.54893060790	76.94416230970
30	24.55151656400	76.95140991200	71	24.54809162630	76.95088486960	112	24.54972115370	76.94446113720
31	24.55174122640	76.95225141190	72	24.54723641680	76.95110785210	113	24.55060413210	76.94461248830
32	24.55151097440	76.95319375490	73	24.54636744440	76.95093443300	114	24.55058553890	76.94393099970
33	24.55078460110	76.95359374410	74	24.54573246180	76.95152710690	115	24.55084557750	76.94307460840
34	24.55041034480	76.95446735660	75	24.54490549960	76.95136149850	116	24.55097645170	76.94239203450
35	24.55015042420	76.95533856160	76	24.54540657280	76.95069822510	117	24.55073245950	76.94177232320
36	24.54955952580	76.95601260370	77	24.54605887640	76.95004261680	118	24.55143529350	76.94115702530
37	24.54916157040	76.95525216400	78	24.54690880410	76.94993100870	119	24.55210255170	76.94049227110
38	24.54871773820	76.95509761210	79	24.54776143700	76.95019464000	120	24.55189976280	76.93997559400
39	24.54830050010	76.95592084900	80	24.54864414090	76.95008964690	121	24.55127708350	76.94064112610

40	24.54745073730	76.95620953720	81	24.54863554400	76.94935871400	122	24.55072379910	76.94141553870
41	24.54686844900	76.95684689620	82	24.54952971510	76.94922900880	123	24.55022427100	76.94222836820
124	24.54974274770	76.94304978740	172	24.54024189810	76.94055017950	220	24.53308039650	76.93370851590
125	24.54899237360	76.94341043550	173	24.53963119460	76.93989335170	221	24.53396817040	76.93385257540
126	24.54829638440	76.94299847830	174	24.53920720560	76.93925826050	222	24.53477679070	76.93426750360
127	24.54764802540	76.94365571850	175	24.53899440760	76.93862450730	223	24.53552226230	76.93416108510
128	24.54690511090	76.94420417150	176	24.53870419810	76.93794529100	224	24.53634308810	76.93419964390
129	24.54614254180	76.94473171810	177	24.53945572650	76.93760692210	225	24.53622309190	76.93351927100
130	24.54539526030	76.94528186490	178	24.54002199590	76.93730077910	226	24.53667288100	76.93335893940
131	24.54457169220	76.94568060380	179	24.54091202360	76.93739054330	227	24.53749059690	76.93363930920
132	24.54370621120	76.94591719810	180	24.54178548550	76.93758635670	228	24.53816696530	76.93309995180
133	24.54285118420	76.94581178110	181	24.54243667660	76.93819329310	229	24.53802185370	76.93215709020
134	24.54209517020	76.94527460740	182	24.54297360250	76.93894301040	230	24.53728641550	76.93158620760
135	24.54127012340	76.94487844130	183	24.54380881210	76.93897946240	231	24.53644925790	76.93122599840
136	24.54040107320	76.94462976610	184	24.54452047310	76.93844959400	232	24.53615364820	76.93044529680
137	24.53953065440	76.94475583700	185	24.54523330460	76.93794062480	233	24.53694954190	76.93077319430
138	24.53866552390	76.94498662510	186	24.54612218780	76.93777123330	234	24.53777259480	76.93114454130
139	24.53776297280	76.94500637670	187	24.54699597650	76.93752746780	235	24.53841837920	76.93181563670
140	24.53686360790	76.94495255870	188	24.54784947520	76.93754676660	236	24.53888723580	76.93264227010
141	24.53687257200	76.94454269690	189	24.54864802230	76.93793178220	237	24.53942265130	76.93244562910
142	24.53776692810	76.94443063830	190	24.54951529560	76.93799400890	238	24.53909262140	76.93156361990
143	24.53866565200	76.94433774950	191	24.54989936830	76.93724480730	239	24.53850706320	76.93082678650
144	24.53955141930	76.94415149570	192	24.54911622470	76.93762745460	240	24.53799073030	76.93002750560
145	24.54043737940	76.94397834090	193	24.54873001360	76.93701617300	241	24.53762839920	76.92914226070
146	24.54133984600	76.94400224250	194	24.54909216410	76.93613805220	242	24.53734190210	76.92828594660
147	24.54219968530	76.94427503180	195	24.54964258610	76.93549378440	243	24.53803966250	76.92846987500
148	24.54299074310	76.94472300750	196	24.54889477990	76.93573903530	244	24.53841232260	76.92935198270
149	24.54376158940	76.94516196520	197	24.54813852500	76.93624760370	245	24.53891272910	76.93014940060
150	24.54452245040	76.94475584250	198	24.54732721460	76.93661951170	246	24.53935901860	76.92958275630
151	24.54525508300	76.94417963120	199	24.54651217040	76.93701029990	247	24.53971301740	76.92972499570
152	24.54599232410	76.94361009150	200	24.54576430770	76.93686217650	248	24.53957365270	76.93069686090
153	24.54674082810	76.94305887900	201	24.54492530230	76.93699077630	249	24.53982504240	76.93162122630
154	24.54750192860	76.94252816620	202	24.54413700710	76.93671864960	250	24.54028583080	76.93245821790
155	24.54826302760	76.94199744730	203	24.54338361730	76.93624656040	251	24.54097426920	76.93300725110
156	24.54864415270	76.94138716370	204	24.54265238380	76.93613557670	252	24.54174257170	76.93352384270
157	24.54851901000	76.94064338230	205	24.54179111980	76.93641905600	253	24.54237202160	76.93407910110
158	24.54794729720	76.94139786710	206	24.54092684900	76.93664041770	254	24.54310555560	76.93393292180
159	24.54717199360	76.94153452700	207	24.54104813550	76.93579937270	255	24.54393760450	76.93408385650
160	24.54707198260	76.94069681920	208	24.54113805740	76.93487754130	256	24.54483661890	76.93402733490
161	24.54708964520	76.94009024570	209	24.54059829720	76.93415254670	257	24.54569008500	76.93423449520
162	24.54650625790	76.94063707810	210	24.53976013040	76.93439312460	258	24.54621288730	76.93378749440
163	24.54605684260	76.94149251280	211	24.53933816450	76.93405168710	259	24.54538918590	76.93340634590
164	24.54552952570	76.94227940450	212	24.53884510430	76.93389735480	260	24.54453892860	76.93309198110
165	24.54485256330	76.94292201620	213	24.53801129040	76.93417248100	261	24.54374414180	76.93263877110

166	24.54431225620	76.94258416850	214	24.53743874640	76.93482001750	262	24.54297896140	76.93211758150
167	24.54372452110	76.94184739000	215	24.53658142760	76.93485578050	263	24.54235233130	76.93150119240
168	24.54329191130	76.94100383650	216	24.53571144390	76.93489850050	264	24.54244026110	76.93053452770
169	24.54273740450	76.94027195570	217	24.53486378750	76.93496067470	265	24.54292615740	76.93107142600
170	24.54186362210	76.94010505030	218	24.53405328910	76.93453101080	266	24.54353647030	76.93156553770
171	24.54105438620	76.94048363910	219	24.53318726780	76.93426795680	267	24.54440234710	76.93184366670
268	24.54528867210	76.93202734220	316	24.54575771270	76.92504954010	364	24.53892885830	76.91821301290
269	24.54610361740	76.93242828320	317	24.54572136460	76.92406764630	365	24.53803406380	76.91808233490
270	24.54690959150	76.93283197630	318	24.54541855030	76.92315091580	366	24.53719905840	76.91845659270
271	24.54766128000	76.93333752340	319	24.54601277330	76.92245592060	367	24.53652652630	76.91910481250
272	24.54850266400	76.93347355750	320	24.54625146620	76.92277156920	368	24.53575582100	76.91959878280
273	24.54837324140	76.93258303550	321	24.54656677870	76.92336633870	369	24.53492916380	76.91991771450
274	24.54778745430	76.93185677000	322	24.54649822540	76.92406414010	370	24.53404400530	76.91973956990
275	24.54701578950	76.93134625140	323	24.54657858590	76.92500405460	371	24.53314563110	76.91975151060
276	24.54687135890	76.93051949370	324	24.54689814760	76.92579733640	372	24.53228028370	76.92003259810
277	24.54773296780	76.93046397410	325	24.54755384040	76.92628892600	373	24.53141947240	76.92032857950
278	24.54851193470	76.93091891590	326	24.54818614040	76.92674523410	374	24.53057264210	76.92067047440
279	24.54910594980	76.93033415240	327	24.54801964520	76.92581154830	375	24.52972581130	76.92101236510
280	24.54969170090	76.93069975870	328	24.54779365080	76.92486971060	376	24.52885842810	76.92127989550
281	24.54995134720	76.93160034020	329	24.54777318110	76.92397135580	377	24.52797772160	76.92145629160
282	24.55044210220	76.93219319840	330	24.54812531750	76.92338941770	378	24.52708292940	76.92132561080
283	24.55124576530	76.93196828500	331	24.54861779180	76.92385319640	379	24.52618228180	76.92125859180
284	24.55107667300	76.93102686600	332	24.54844945490	76.92476445310	380	24.52530574030	76.92105316900
285	24.55033891170	76.93047913140	333	24.54901151670	76.92525307860	381	24.52449110190	76.92064675550
286	24.54988819240	76.92966432910	334	24.54952081320	76.92585125660	382	24.52443446360	76.91981722530
287	24.54918220270	76.92905378210	335	24.55016477650	76.92537055310	383	24.52533199180	76.91971130160
288	24.54832028930	76.92887691760	336	24.55033718180	76.92442382810	384	24.52623164820	76.91963400270
289	24.54748719720	76.92915724410	337	24.55007287690	76.92348030260	385	24.52619777670	76.91911102920
290	24.54665701030	76.92943303780	338	24.54983443000	76.92256955230	386	24.52538173000	76.91887454470
291	24.54578243350	76.92923716440	339	24.55060848960	76.92257515180	387	24.52477083160	76.91814887060
292	24.54495595080	76.92884190840	340	24.55136344640	76.92265518110	388	24.52415406200	76.91747259520
293	24.54405343560	76.92881996850	341	24.55070620960	76.92221428300	389	24.52348424500	76.91704963400
294	24.54323868390	76.92850216590	342	24.55104697240	76.92164764520	390	24.52407488230	76.91655396500
295	24.54352993280	76.92783896430	343	24.55105594190	76.92114063670	391	24.52493102800	76.91675097600
296	24.54433949260	76.92777167880	344	24.55023062050	76.92087067570	392	24.52541352100	76.91756391040
297	24.54417677320	76.92708964450	345	24.54937061280	76.92085643290	393	24.52605218030	76.91824561440
298	24.54329297540	76.92697066200	346	24.54857126800	76.92054995840	394	24.52681480940	76.91877326160
299	24.54288685250	76.92646374960	347	24.54807516470	76.91979139450	395	24.52761064020	76.91923744490
300	24.54253149410	76.92560516540	348	24.54883106790	76.91937315680	396	24.52840968270	76.91897975150
301	24.54181232930	76.92503774740	349	24.54968663110	76.91928925600	397	24.52919464160	76.91849824420
302	24.54232077590	76.92477736160	350	24.55012718690	76.91879030480	398	24.52984695550	76.91781609340
303	24.54310714470	76.92525527620	351	24.54980129570	76.91796396270	399	24.53065483080	76.91747898010
304	24.54385985350	76.92579945190	352	24.54910551260	76.91857363250	400	24.53154560840	76.91750474180
305	24.54455404610	76.92606448800	353	24.54842499730	76.91914440280	401	24.53243447750	76.91767694470

306	24.54450805790	76.92517211750	354	24.54757210080	76.91945759360	402	24.53257129250	76.91719203620
307	24.54457001800	76.92429385330	355	24.54669602450	76.91969409200	403	24.53168326030	76.91701459680
308	24.54380628750	76.92381323770	356	24.54580187750	76.91982358100	404	24.53078897200	76.91690433960
309	24.54310307860	76.92324421300	357	24.54489938330	76.91981928410	405	24.52988904990	76.91692951570
310	24.54312820660	76.92281651720	358	24.54399693270	76.91984436460	406	24.52899612660	76.91707428290
311	24.54360809320	76.92244613900	359	24.54316709480	76.91952953220	407	24.52810602990	76.91723766070
312	24.54425915100	76.92300777850	360	24.54226468810	76.91950258470	408	24.52721509670	76.91732302320
313	24.54485648190	76.92372510800	361	24.54142475460	76.91923049460	409	24.52667292970	76.91660639210
314	24.54533420120	76.92455905990	362	24.54064456840	76.91873408940	410	24.52731826840	76.91607222860
315	24.54537330640	76.92547174080	363	24.53981919670	76.91837550170	411	24.52807505260	76.91559409300
412	24.52894440650	76.91552801580	458	24.54213314560	76.91506298500	504	24.55151670120	76.91476666880
413	24.52972052570	76.91597547670	459	24.54301995100	76.91523979540	505	24.55159058500	76.91559233300
414	24.53059962900	76.91617771450	460	24.54368027390	76.91579239640	506	24.55223440960	76.91490676310
415	24.53147946850	76.91620852560	461	24.54411574160	76.91659899370	507	24.55284384770	76.91419028480
416	24.53097597910	76.91567584640	462	24.54500557940	76.91657937160	508	24.55348249160	76.91351152690
417	24.53008474650	76.91552697840	463	24.54589611680	76.91641901480	509	24.55359687470	76.91419859460
418	24.52932278220	76.91504952470	464	24.54675071030	76.91612616100	510	24.55351244830	76.91515252080
419	24.52911396960	76.91416013120	465	24.54640460510	76.91559093280	511	24.55350023940	76.91583464830
420	24.52892743870	76.91325253850	466	24.54596432800	76.91511227100	512	24.55309203350	76.91634930280
421	24.52819127900	76.91269601930	467	24.54546926200	76.91447664800	513	24.55372564910	76.91689775510
422	24.52744880250	76.91213471540	468	24.54601115020	76.91391271500	514	24.55380205770	76.91787690820
423	24.52670050410	76.91158273320	469	24.54597302110	76.91294519890	515	24.55386761720	76.91885894910
424	24.52615025820	76.91080543590	470	24.54627742360	76.91257034790	516	24.55423382850	76.91975048820
425	24.52629341020	76.90992366230	471	24.54661377170	76.91347325220	517	24.55436220410	76.92072013950
426	24.52711308430	76.90991168730	472	24.54714097310	76.91423985610	518	24.55441580240	76.92170413990
427	24.52772717710	76.91062026600	473	24.54796090780	76.91434296750	519	24.55449670820	76.92268715950
428	24.52836571600	76.91131280500	474	24.54774381340	76.91361393620	520	24.55458596940	76.92366927110
429	24.52905160450	76.91195440060	475	24.54756720550	76.91273387690	521	24.55472443450	76.92464276250
430	24.52973748880	76.91259600420	476	24.54833739560	76.91309028650	522	24.55508950780	76.92553396680
431	24.53054055990	76.91303661840	477	24.54899598260	76.91356547340	523	24.55557834690	76.92635573810
432	24.53108199350	76.91380621250	478	24.54899756650	76.91265392190	524	24.55632126350	76.92690911940
433	24.53157808460	76.91461545640	479	24.54863947880	76.91186915140	525	24.55707935300	76.92744501210
434	24.53220745760	76.91532032720	480	24.54830015550	76.91096065750	526	24.55752922510	76.92826145560
435	24.53300768470	76.91565354090	481	24.54814819990	76.91011944550	527	24.55778322220	76.92920859530
436	24.53300610650	76.91478231140	482	24.54876692580	76.91068432450	528	24.55803721220	76.93015573840
437	24.53223984040	76.91426651970	483	24.54909078990	76.91158098700	529	24.55816285840	76.93112396080
438	24.53177031160	76.91342946060	484	24.54984612550	76.91207341170	530	24.55817456760	76.93211089400
439	24.53131095210	76.91258055990	485	24.55020451630	76.91268152950	531	24.55818627020	76.93309782700
440	24.53086484650	76.91176719720	486	24.55090094190	76.91250159700	532	24.55819941740	76.93408467530
441	24.53117930940	76.91108212430	487	24.55147723630	76.91189269290	533	24.55828321510	76.93506742880
442	24.53193241140	76.91151298210	488	24.55171948590	76.91219355550	534	24.55836700620	76.93605018310
443	24.53256315070	76.91221752760	489	24.55225977860	76.91194178450	535	24.55845079090	76.93703293830
444	24.53343361850	76.91245025270	490	24.55246305450	76.91098595950	536	24.55853457000	76.93801569430
445	24.53430932010	76.91268976200	491	24.55234899610	76.91002243210	537	24.55892157840	76.93887212710

446	24.53515528620	76.91295474530	492	24.55254613800	76.90911868860	538	24.55945715680	76.93966667000
447	24.53590540840	76.91344100800	493	24.55299042990	76.90915939890	539	24.55976898170	76.94059201320
448	24.53678689880	76.91329584660	494	24.55357824660	76.90907392360	540	24.56018829330	76.94146508400
449	24.53730815660	76.91403608530	495	24.55397431810	76.90896347860			
450	24.53812416160	76.91436683600	496	24.55362562060	76.90974386350			
451	24.53831368330	76.91350355320	497	24.55281105440	76.91003386940			
452	24.53868253000	76.91264189170	498	24.55285049890	76.91100287580			
453	24.53941471240	76.91207413400	499	24.55346946060	76.91136422100			
454	24.54023398320	76.91193009520	500	24.55311691550	76.91192654230			
455	24.54074369490	76.91269361270	501	24.55319423630	76.91273533310			
456	24.54126117300	76.91347043930	502	24.55236996590	76.91308225670			
457	24.54157007540	76.91439079720	503	24.55180177100	76.91383510110			

**Details of Catchment Area/Zone of Influence of Hinglot Dam Wetland falling within the boundary limit of Baran, Rajasthan:-**

**Total Area Of = 416.64**

**The geo-coordinates of Hinglot Dam Wetland and its Zone of influence**

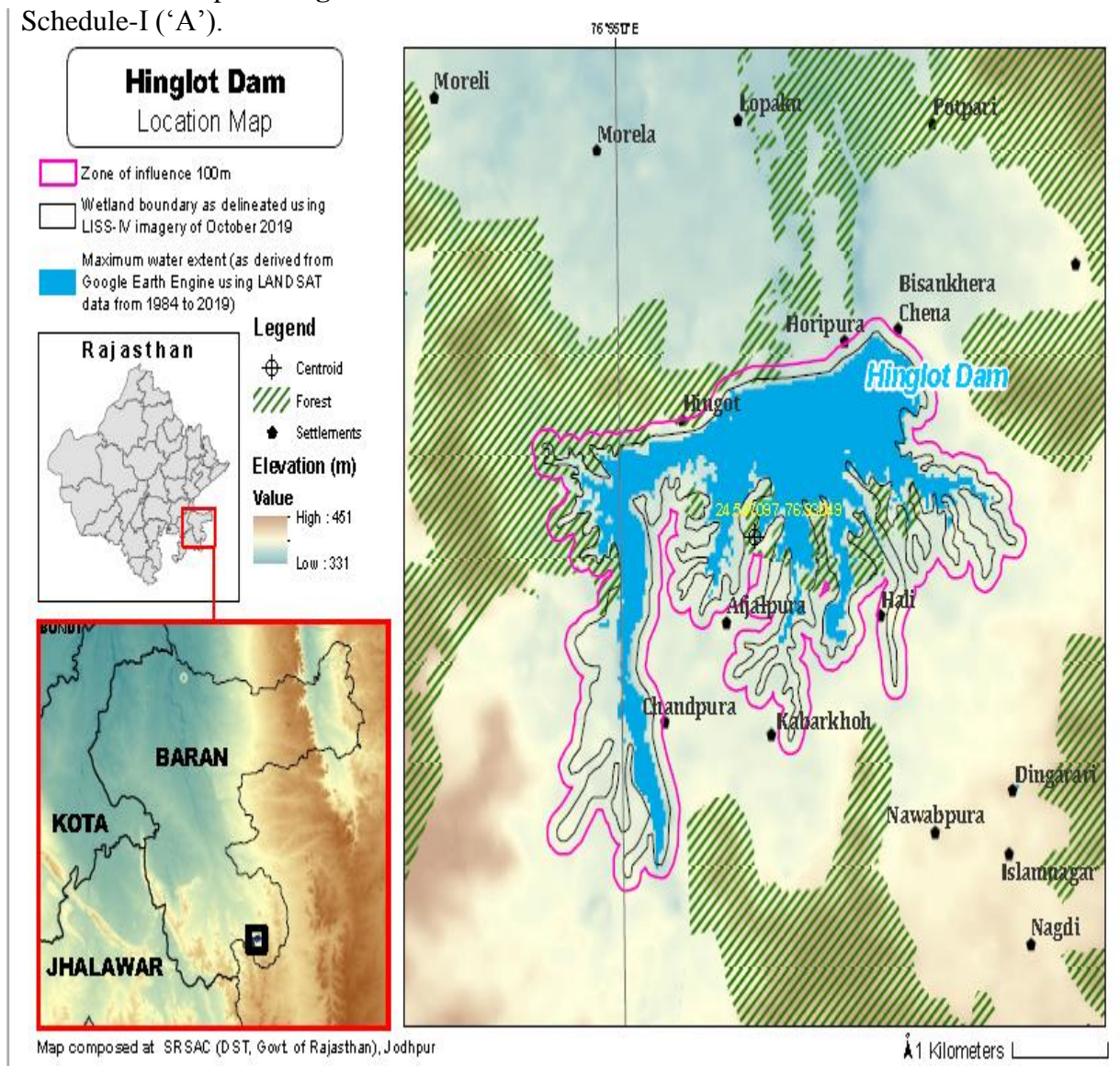
S.no	Latitude	Longitude	S.no	Latitude	Longitude	S.no	Latitude	Longitude
1	24.55443342940	76.94741957180	42	24.53963427360	76.94576861170	83	24.53220486050	76.93477264070
2	24.55417513930	76.94692803960	43	24.53876101650	76.94597149880	84	24.53190148780	76.93387162220
3	24.55347840090	76.94739064800	44	24.53785846890	76.94599139540	85	24.53231121520	76.93303862920
4	24.55352819880	76.94834009610	45	24.53695696810	76.94596633090	86	24.53314573820	76.93272304190
5	24.55337041850	76.94928922350	46	24.53608028000	76.94575609980	87	24.53403637350	76.93285245170
6	24.55276681700	76.94994438340	47	24.53561968040	76.94495567710	88	24.53488982230	76.93316511490
7	24.55251517370	76.95086516500	48	24.53585945050	76.94403476180	89	24.53539935670	76.93266646680
8	24.55269738170	76.95175614920	49	24.53665004900	76.94357875710	90	24.53615653680	76.93220266750
9	24.55256787090	76.95272669190	50	24.53754515830	76.94346230910	91	24.53559248320	76.93169138670
10	24.55234836690	76.95367170900	51	24.53844388250	76.94336941380	92	24.53516061400	76.93085131600
11	24.55171439430	76.95434406910	52	24.53933110950	76.94319367810	93	24.53537638470	76.92990574380
12	24.55130152890	76.95504101230	53	24.54021530790	76.94299541260	94	24.53613654300	76.92942527760
13	24.55092185750	76.95589763930	54	24.54111756830	76.94300918920	95	24.53651035480	76.92913919670
14	24.55036908460	76.95666600720	55	24.54200290040	76.94314844090	96	24.53643153540	76.92816687430
15	24.54954534020	76.95701668400	56	24.54285214380	76.94348310120	97	24.53687262340	76.92732727350
16	24.54872129840	76.95679503690	57	24.54361036010	76.94400130430	98	24.53772707150	76.92717064550
17	24.54788685240	76.95716456340	58	24.54378280210	76.94370213080	99	24.53852844670	76.92760299860
18	24.54740367640	76.95794320850	59	24.54332442340	76.94288006210	100	24.53904513030	76.92839375790
19	24.54664150220	76.95840099190	60	24.54283511010	76.94206278180	101	24.53989475360	76.92833824510
20	24.54579600260	76.95814364100	61	24.54231730090	76.94128161920	102	24.54054740210	76.92895905200
21	24.54530679480	76.95736203970	62	24.54157664180	76.94131396370	103	24.54060449800	76.92993543620
22	24.54540644240	76.95638363250	63	24.54073726710	76.94166389910	104	24.54050464300	76.93090594990
23	24.54490447440	76.95586552400	64	24.53987652890	76.94149114800	105	24.54099527990	76.93172825510
24	24.54403714020	76.95564780550	65	24.53926144190	76.94079970950	106	24.54166204050	76.93229782420
25	24.54334855220	76.95501351690	66	24.53852488750	76.94026377040	107	24.54144298810	76.93136810250
26	24.54297827890	76.95414461840	67	24.53823550280	76.93936622330	108	24.54153060870	76.93038843210
27	24.54334943620	76.95326546520	68	24.53771661210	76.93858202020	109	24.54205950540	76.92963910010

28	24.54416000420	76.95287040160	69	24.53780292320	76.93761734030	110	24.54292943070	76.92951835370
29	24.54496047530	76.95260149600	70	24.53846341410	76.93697931260	111	24.54363000970	76.93011022890
30	24.54444679100	76.95229430980	71	24.53910679950	76.93635442450	112	24.54417316140	76.93074569940
31	24.54400689450	76.95147356590	72	24.53991216870	76.93611769460	113	24.54505023200	76.93097368640
32	24.54414689870	76.95053383920	73	24.54029816430	76.93524114140	114	24.54587007640	76.93118210690
33	24.54480506530	76.94989462640	74	24.53950615930	76.93553536850	115	24.54582542950	76.93031844370
34	24.54530331260	76.94925942800	75	24.53868984600	76.93517835850	116	24.54499497100	76.92993425010
35	24.54460133460	76.94864143800	76	24.53811964070	76.93554286590	117	24.54411342830	76.92980857810
36	24.54398539720	76.94806662150	77	24.53728111420	76.93587692970	118	24.54322835280	76.92968098740
37	24.54346019320	76.94731520840	78	24.53639444100	76.93587822740	119	24.54251236490	76.92908935680
38	24.54291578730	76.94694615740	79	24.53553687020	76.93599127370	120	24.54225450870	76.92815731280
39	24.54211598310	76.94649293680	80	24.53466607270	76.93594654990	121	24.54199390430	76.92731734540
40	24.54134912780	76.94597897450	81	24.53385903880	76.93550727710	122	24.54192456710	76.92636303580
41	24.54050259210	76.94563953590	82	24.53298701460	76.93525785430	123	24.54120437380	76.92580156210
124	24.54079806840	76.92496668570	172	24.52361371090	76.91837031720	220	24.54494615820	76.91254227740
125	24.54113654400	76.92407446180	173	24.52282753420	76.91794979730	221	24.54533701850	76.91168306090
126	24.54195352370	76.92370323570	174	24.52255438340	76.91701853610	222	24.54619370420	76.91145120360
127	24.54194933930	76.92320505730	175	24.52283491450	76.91612412910	223	24.54696506820	76.91193107270
128	24.54206470040	76.92225663750	176	24.52359597660	76.91560276490	224	24.54749473480	76.91150886330
129	24.54279731650	76.92173996380	177	24.52449491000	76.91557712370	225	24.54716443660	76.91060174580
130	24.54363322580	76.92145959860	178	24.52533756290	76.91586676900	226	24.54728451600	76.90966031000
131	24.54448679560	76.92172037250	179	24.52591418580	76.91588112650	227	24.54802650890	76.90914022960
132	24.54510166190	76.92193003650	180	24.52664200870	76.91531603720	228	24.54890139600	76.90931000110
133	24.54586799020	76.92141119920	181	24.52742604940	76.91486074300	229	24.54949360760	76.91002233920
134	24.54675117700	76.92140512110	182	24.52820434070	76.91444346120	230	24.54987620050	76.91088556710
135	24.54729706860	76.92213904410	183	24.52788907310	76.91366735480	231	24.55067058080	76.91124877270
136	24.54778366210	76.92232032530	184	24.52714660090	76.91310604710	232	24.55136961200	76.91067768090
137	24.54866703460	76.92247005680	185	24.52639995710	76.91255141780	233	24.55141818690	76.90988997940
138	24.54913164610	76.92191883870	186	24.52575230420	76.91188002050	234	24.55161329330	76.90896389290
139	24.54840389320	76.92169703430	187	24.52524632720	76.91106602840	235	24.55196654990	76.90810061580
140	24.54773420120	76.92104235900	188	24.52519967670	76.91008754890	236	24.55282186450	76.90784719250
141	24.54704374130	76.92062366840	189	24.52563299010	76.90925090680	237	24.55365075590	76.90763613460
142	24.54615236290	76.92077676000	190	24.52640409870	76.90880700920	238	24.55447855630	76.90797874240
143	24.54525181430	76.92079741050	191	24.52729025870	76.90889816590	239	24.55488623240	76.90884550490
144	24.54434936270	76.92082180220	192	24.52801968300	76.90945960080	240	24.55479619030	76.90981237940
145	24.54347592230	76.92066561090	193	24.52859571420	76.91021939680	241	24.55421021350	76.91053554400
146	24.54260834300	76.92050011520	194	24.52927675180	76.91086621330	242	24.55451437640	76.91129397970
147	24.54170652390	76.92046452890	195	24.52987735680	76.91133292740	243	24.55429288940	76.9122221240
148	24.54089821830	76.92003857310	196	24.53023960260	76.91047416160	244	24.55447668650	76.91301048340
149	24.54011881960	76.91954068530	197	24.53106277560	76.91007550970	245	24.55464177010	76.91395217830
150	24.53926316950	76.91927199670	198	24.53190876930	76.91029087960	246	24.55449598480	76.91485558380
151	24.53837036910	76.91912708470	199	24.53263605960	76.91087335820	247	24.55466771380	76.91580033330
152	24.53753983120	76.91941082850	200	24.53334583920	76.91141933200	248	24.55461929130	76.91671863260
153	24.53688234400	76.92008654490	201	24.53422392580	76.91164781880	249	24.55469251320	76.91769935530
154	24.53607495120	76.92052541520	202	24.53510955010	76.91180955490	250	24.55478957530	76.91866941340

155	24.53524913590	76.92091897390	203	24.53589963570	76.91228466250	251	24.55512472710	76.91958088150
156	24.53436182450	76.92079042620	204	24.53677807580	76.91230853380	252	24.55526894320	76.92055018740
157	24.53346551710	76.92071262560	205	24.53758757420	76.91266528850	253	24.55530824550	76.92153470880
158	24.53259597360	76.92095951990	206	24.53810331980	76.91188480130	254	24.55538915190	76.92251773550
159	24.53173450950	76.92125335670	207	24.53882601100	76.91130051640	255	24.55547718410	76.92349998770
160	24.53088767750	76.92159524570	208	24.53962847390	76.91085167780	256	24.55561556040	76.92447350290
161	24.53004084490	76.92193713050	209	24.54050408870	76.91098818670	257	24.55605848770	76.92532359020
162	24.52917530540	76.92221189220	210	24.54120114000	76.91156562630	258	24.55668638070	76.92599188850
163	24.52829682720	76.92243909660	211	24.54172597330	76.91234655150	259	24.55744447360	76.92652777710
164	24.52740108500	76.92236762480	212	24.54213279340	76.91321277500	260	24.55810314100	76.92718782920
165	24.52650312730	76.92227136250	213	24.54247551700	76.91411627750	261	24.55842690470	76.92810087690
166	24.52560417380	76.92218975990	214	24.54334634230	76.91431767780	262	24.55868090210	76.92904802310
167	24.52474327120	76.92189299670	215	24.54416034810	76.91472981710	263	24.55893489330	76.92999517270
168	24.52394758000	76.92143868450	216	24.54457542400	76.91559147500	264	24.55906377930	76.93096459680
169	24.52340105380	76.92069671110	217	24.54480662100	76.91515335600	265	24.55907548910	76.93195153710
170	24.52351099160	76.91972461070	218	24.54456340890	76.91424469400	266	24.55908719180	76.93293847700
171	24.52400217150	76.91894295380	219	24.54501538150	76.91342278640	267	24.55909888800	76.93392541670
268	24.55917631620	76.93490854650	276	24.56173811120	76.94202823560	284	24.55869762740	76.94813979530
269	24.55926010820	76.93589130800	277	24.56220426110	76.94285000450	285	24.55791372530	76.94851881590
270	24.55934389370	76.93687407030	278	24.56216293750	76.94382400930	286	24.55724965570	76.94915611900
271	24.55942767270	76.93785683340	279	24.56158190070	76.94457130930	287	24.55638589200	76.94938969070
272	24.55990933810	76.93867383820	280	24.56104915550	76.94536639210	288	24.55550781610	76.94919657880
273	24.56037224570	76.93951316840	281	24.56067183240	76.94625866700	289	24.55503596920	76.94840213080
274	24.56070374540	76.94042926590	282	24.56016464690	76.94707516130	290	24.54322117560	76.93769761270
275	24.56117383730	76.94126931620	283	24.55952260570	76.94776764290	291	24.54381632890	76.93781099150
						292	24.54316191590	76.93737782620



The detailed Map of **Hinglot Dam Wetland** and its Zone of Influence is annexed herewith as Schedule-I ('A').



### Schedule-II

#### Prohibited Activities in Hinglot Wetland :-

1. Conversion for non wetland uses including encroachments of any kind;
2. Setting up of any new industry and expansion of existing industries;
3. Manufacture or/and handling or/and storage or/and disposal of construction and demolition waste covered under the Construction and Demolition Waste Management Rules, 2016; hazardous substances covered under the Manufacture, Storage and Import of Hazardous Chemical Rules, 1989 or the Rules for Manufacture, Use, Import, Export and Storage of Hazardous Microorganism Genetically Engineered organized or cells, 1989 or the Hazardous Waste (Management, Handling and Transboundary Movement) Rules, 2008; electronic waste covered under the E-Waste (Management) Rules 2016; plastic waste covered under Plastic Waste (Management) Rules, 2016;
4. Solid waste storage and disposal;

5. Discharge of untreated waste and effluents from industries, cities, towns, villages and other human settlements;
6. Any construction of permanent nature except for boat jetties within fifty metres from the mean high flood level observed in the past ten years calculated from the date of commencement of these rules;
7. Commercial mining, stone quarrying and crushing units
8. Commercial water extraction Establishment of large scale commercial livestock and poultry farms;
9. Reducing area/ capacity of the water body;
10. Feeding of fishes and migratory birds by the public;
11. Any type of poaching.

**Prohibited Activities in Catchment Area/Zone of Influence :-**

1. Discharge of untreated Solid/liquid waste and effluents;
2. Manufacture or/and handling or/and storage or/and disposal of construction and demolition waste covered under the Construction and Demolition Waste Management Rules, 2016; hazardous substances covered under the Manufacture, Storage and Import of Hazardous Chemical Rules, 1989 or the Rules for Manufacture, Use, Import, Export and Storage of Hazardous Microorganism Genetically Engineered organized or cells, 1989 or the Hazardous Waste (Management, Handling and Transboundary Movement) Rules, 2008; electronic waste covered under the E-Waste (Management) Rules 2016; plastic waste covered under Plastic Waste (Management) Rules, 2016;
3. Extraction of commercial water including groundwater.
4. Any type of poaching;

**Schedule-III**

**Regulated Activities in Hinglot Wetland :-**

1. Fisheries;
2. Plying of boats;
3. Desilting;
4. Construction of temporary structures;
5. Water extraction for certain purposes.

**Regulated Activities in Catchment Area/Zone of Influence :-**

1. Conversion of land for any type of construction;
2. Setting up of any new industries and expansion of existing industries;
3. Mining.

[F.No.6 (3) Env/2023]

**By order of the Governor,**

Shikhar Agrawal,

**Additional Chief Secretary to the Government.**