



सत्यमेव जयते

राजस्थान राजपत्र
विशेषांक

साधिकार प्रकाशित

RAJASTHAN GAZETTE
Extraordinary

Published by Authority

भाद्र 09, गुरुवार, शाके 1945-अगस्त 31, 2023
Bhadra 09, Thursday, Saka 1945- August 31, 2023

भाग 4 (ग)

उप-खण्ड (I)

राज्य सरकार तथा अन्य राज्य-प्राधिकारियों द्वारा जारी किये गये (सामान्य आदेशों, उप-विधियों आदि को सम्मिलित करते हुए) सामान्य कानूनी नियम।

Department of Environment and Climate Change
Notification

Jaipur, July 19, 2023

G.S.R.108 .-Whereas the draft notification of the Kishan Kareri wetland, situated in village Kishan Kareri, Tehsil Dungla, district Chittorgarh Rajasthan was published as required by rule 7 of the Wetland (Conservation and Management) Rules, 2017 read with the Environment (Protection) Act, 1986 (Central Act No. 29 of 1986), vide notification of the Department of Environment and Climate Change, number G.S.R. 34 dated 24.04.2023 in the Rajasthan Gazette, Extraordinary, Part 4 (ga), sub-part (II), inviting objections and suggestions from all persons likely to be affected thereby before expiry of the period of sixty days from the date on which the copies of the said notification were made available to the public.

And whereas, copies of the Gazette in which the said notification was published were made available to the public on the 24.04.2023.

And whereas, no objections and suggestions were received on the said Draft Notification.

Now therefore, in exercise of the powers conferred by rule 7 of the Wetland (Conservation and Management) Rules, 2017 read with provisions of the Environment (Protection) Act, 1986 (Central Act No. 29 of 1986), the State Government hereby notifies Kishan Kareri wetland, situated in village Kishan Kareri, Tehsil Dungla, district Chittorgarh Rajasthan as a wetland and that,-

- (i) the extent of the wetland/wetland complex and its zone of influence shall be as described in Schedule-I of this notification;
- (ii) the activities prohibited within the wetland and its zone of influence shall be as listed in Schedule-II of this notification;
- (iii) the activities regulated within the wetland and its zone of influence, i.e. permitted only with permission of the State Government shall be as listed in Schedule-III of this notification. Request for permission for regulated activities may be made to the District Environment Committee headed by the District Collector; and
- (iv) the State Wetland Authority, Rajasthan shall monitor the enforcement of the provisions of this notification.

Schedule-I

Kishan Kareri Talab Wetland comprising of total area of area of **52.3** Hectare

The geo- coordinates of Kishan Kareri Talab, Chittorgarh, Rajasthan

Kishan Kareri		
S.no	Latitude	Longitude
1	24.493622	74.289793
2	24.493301	74.288908
3	24.493076	74.288004
4	24.492443	74.287415
5	24.492252	74.286461
6	24.491988	74.285528
7	24.491829	74.284580
8	24.492020	74.283641
9	24.492388	74.282750
10	24.492783	74.281874
11	24.493432	74.281355
12	24.494325	74.281323
13	24.495217	74.281380
14	24.496109	74.281458
15	24.496997	74.281566
16	24.497876	74.281751
17	24.498756	74.281918
18	24.499001	74.282701
19	24.498932	74.283675
20	24.498830	74.284643
21	24.498571	74.285578
22	24.498201	74.286458
23	24.497698	74.287234
24	24.496936	74.287734
25	24.496192	74.288275
26	24.495541	74.288918
27	24.495097	74.289766
28	24.494571	74.290540

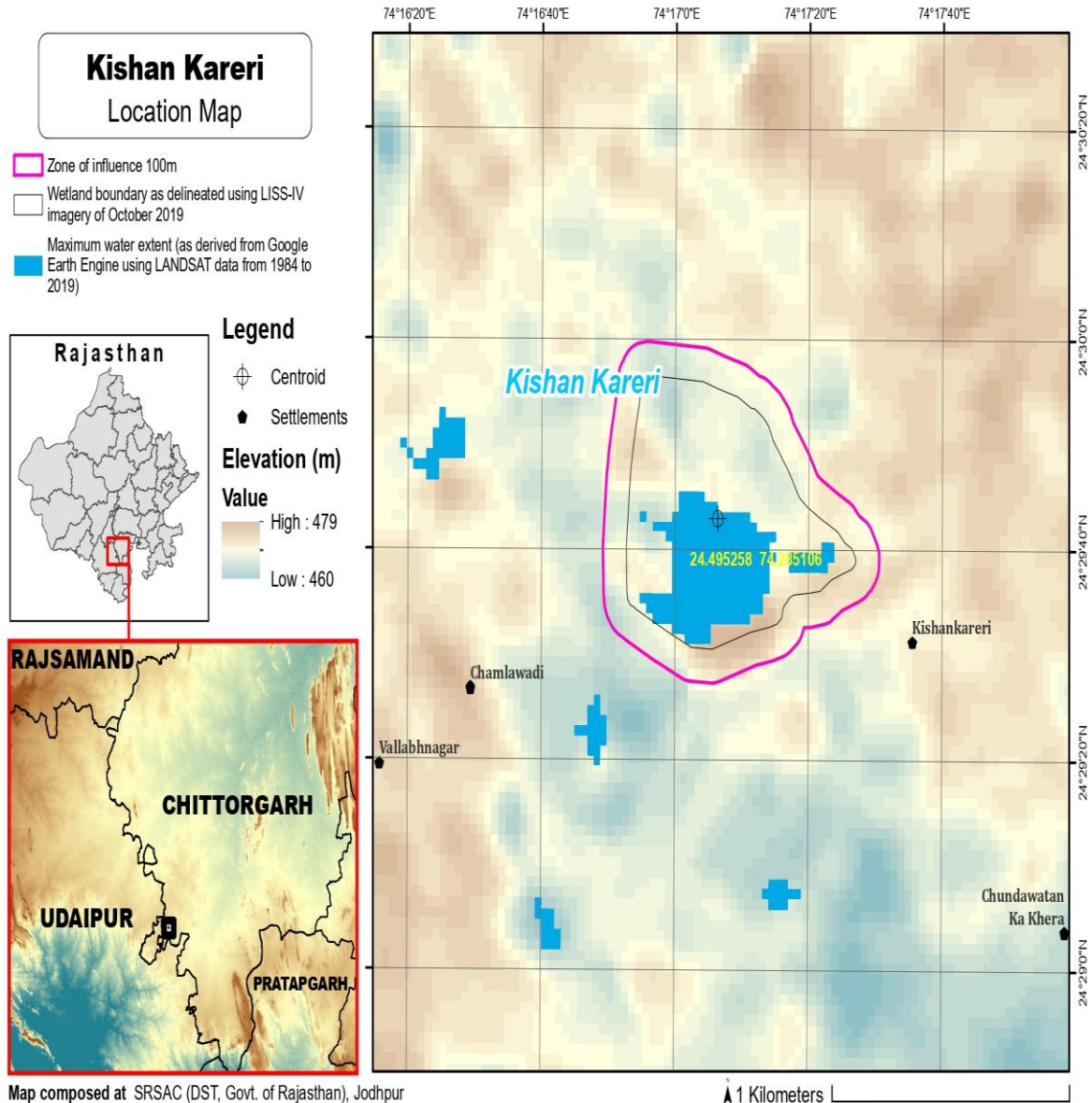
Details of Catchment Area/Zone of influence of Kishan Kareri Talab, Chittorgarh, Rajasthan
Area/Zone of influence of Kishan kareri Talab **32.02**Hectare

The geo- coordinates of zone of influence of Kishan Kareri Talab, Chittorgarh, Rajasthan

Kishan Kareri

S.no	Latitude	Longitude	S.no	Latitude	Longitude
1	24.490964	74.284003	18	24.499390	74.286011
2	24.491265	74.283089	19	24.499024	74.286895
3	24.491639	74.282202	20	24.498548	74.287713
4	24.492034	74.281325	21	24.497811	74.288248
5	24.492593	74.280585	22	24.497085	74.288819
6	24.493452	74.280376	23	24.496350	74.289362
7	24.494346	74.280345	24	24.495897	74.290203
8	24.495238	74.280402	25	24.495378	74.290987
9	24.496130	74.280479	26	24.494757	74.291659
10	24.497019	74.280584	27	24.493898	74.291812

11	24.497898	74.280757	28	24.493201	74.291240
12	24.498778	74.280934	29	24.492870	74.290334
13	24.499588	74.281295	30	24.492472	74.289472
14	24.499930	74.282168	31	24.492207	74.288639
15	24.499867	74.283143	32	24.491644	74.287902
16	24.499797	74.284117	33	24.491433	74.286954
17	24.499642	74.285073	34	24.491190	74.286014
			35	24.490932	74.285079



Schedule-II**Prohibited Activities in Kishan Kareri Wetland :-**

1. Conversion for non wetland uses including encroachments of any kind;
2. Setting up of any new industry and expansion of existing industries;
3. Manufacture or/and handling or/and storage or/and disposal of construction and demolition waste covered under the Construction and Demolition Waste Management Rules, 2016; hazardous substances covered under the Manufacture, Storage and Import of Hazardous Chemical Rules, 1989 or the Rules for Manufacture, Use, Import, Export and Storage of Hazardous Microorganism Genetically Engineered organized or cells, 1989 or the Hazardous Waste (Management, Handling and Transboundary Movement) Rules, 2008; electronic waste covered under the E-Waste (Management) Rules 2016; plastic waste covered under Plastic Waste (Management) Rules, 2016;
4. Solid waste storage and disposal;
5. Discharge of untreated waste and effluents from industries, cities, towns, villages and other human settlements;
6. Any construction of permanent nature except for boat jetties within fifty metres from the mean high flood level observed in the past ten years calculated from the date of commencement of these rules;
7. Commercial mining, stone quarrying and crushing units
8. Commercial water extraction Establishment of large scale commercial livestock and poultry farms;
9. Reducing area/ capacity of the water body;
10. Feeding of fishes and migratory birds by the public;
11. Any type of poaching.

Prohibited Activities in Catchment Area/Zone of Influence :-

1. Discharge of untreated Solid/liquid waste and effluents;
2. Manufacture or/and handling or/and storage or/and disposal of construction and demolition waste covered under the Construction and Demolition Waste Management Rules, 2016; hazardous substances covered under the Manufacture, Storage and Import of Hazardous Chemical Rules, 1989 or the Rules for Manufacture, Use, Import, Export and Storage of Hazardous Microorganism Genetically Engineered organized or cells, 1989 or the Hazardous Waste (Management, Handling and Transboundary Movement) Rules, 2008; electronic waste covered under the E-Waste (Management) Rules 2016; plastic waste covered under Plastic Waste (Management) Rules, 2016;
3. Extraction of commercial water including groundwater.
4. Any type of poaching;

Schedule-III**Regulated Activities in Kishan Kareri Wetland :-**

1. Fisheries;
2. Plying of boats;
3. Desilting;
4. Construction of temporary structures;
5. Water extraction for certain purposes.

Regulated Activities in Catchment Area/Zone of Influence :-

1. Conversion of land for any type of construction;
2. Setting up of any new industries and expansion of existing industries;
3. Mining.

[F.No.6 (3) Env/2023]

By order of the Governor,

Shikhar Agrawal,

Additional Chief Secretary to the Government.

Government Central Press, Jaipur.