 सत्यमेव जयते	राजस्थान राजपत्र विशेषांक	RAJASTHAN GAZETTE Extraordinary
	साधिकार प्रकाशित	Published by Authority
	चैत्र 29, बुधवार, शाके 1945-अप्रैल 19, 2023 <i>Chaitra 29, Wednesday, Saka 1945- April 19, 2023</i>	

भाग 4 (ग)

उप-खण्ड(II)

राज्य सरकार तथा अन्य राज्य प्राधिकारियों द्वारा जारी किये गये कानूनी आदेश तथा अधिसूचनाएं।

Department of Environment and Climate Change

Notification

Jaipur, March 21, 2023

S.O.14 .-The following draft of the notification, which the State Government proposes to issue in exercise of the powers conferred by rule 7 of the Wetland (Conservation and Management) Rules, 2017 read with Environment (Protection) Act, 1986 (Central Act No. 29 of 1986), is hereby published for the information of the persons likely to be concerned or affected thereby and notice is hereby given to them that the said draft notification shall be taken into consideration after the expiry of a period of sixty days from the date on which copies of this notification as published in the Official Gazette are made available to the public.

Any person interested in making any objection or suggestion on the proposals contained in the draft notification may forward the same in writing for consideration to the State Government within the period of 60 days as specified above to the Director cum Joint Secretary, Department of Environment and Climate Change Room No. 8240 SSO Building, Government Secretariat, Jaipur, Rajasthan or at env_raj@yahoo.co.in.

Draft Notification

WHEREAS, the Chandlai wetland, situated in Chandlai village of Tonk Tehsil in Tonk district of Rajasthan, is considered to be critically significant for its ecosystem services and biodiversity values for the local communities and society at large;

AND WHEREAS, it is considered that for sustaining the said values, the ecological character of wetland ecosystem needs to be maintained by regulating developmental activities within the wetland as well as within its zone of influence;

NOW THEREFORE, the State Government declares that the Chandlai wetland shall be covered under the provisions of the Wetlands (Conservation and Management) Rules, 2017 and notifies that,-

- (i) the extent of the wetland /wetland complex and its zone of influence shall be as described in Schedule-I of this notification;
- (ii) the activities prohibited within the wetland and its zone of influence shall be as listed in Schedule-II of this notification;
- (iii) the activities regulated within the wetland and its zone of influence, i.e. permitted only with permission of the State Government shall be as listed in Schedule-III of this notification. Request for permission for regulated activities may be made to the District Environment Committee headed by the District Collector; and

- (iv) the State Wetland Authority, Rajasthan shall monitor the enforcement of the provisions of this notification.

Schedule-I

Chandali Wetland Complex comprising of total area of 556.01 Hectare within the following boundary delineation:-

The geo-coordinates of Chandali Wetland of Tonk, Rajasthan

Chandlai

S. no	Latitude	Longitude	S. no	Latitude	Longitude	S. no	Latitude	Longitude
1	26.09143398740	75.79895006660	53	26.11178756500	75.79583560940	105	26.10439367290	75.82021478130
2	26.09125307550	75.79809340920	54	26.11234433900	75.79662270200	106	26.10353395760	75.81991756940
3	26.09159331540	75.79716750590	55	26.11295202180	75.79736238890	107	26.10270042000	75.81953355900
4	26.09146259790	75.79630559040	56	26.11355009110	75.79810215560	108	26.10187167290	75.81913668390
5	26.09059204090	75.79620661700	57	26.11423219630	75.79875742380	109	26.10183434720	75.81816967180
6	26.08969783490	75.79633089260	58	26.11493152070	75.79938994300	110	26.10183619610	75.81716966870
7	26.08881938180	75.79612534830	59	26.11563167890	75.80002122490	111	26.10173740510	75.81617573070
8	26.08797446790	75.79577344520	60	26.11626618760	75.80073275810	112	26.10156906380	75.81522148900
9	26.08720671850	75.79527321810	61	26.11690069250	75.80144429910	113	26.10100433960	75.81445629610
10	26.08701860950	75.79435922950	62	26.11751163990	75.80218039760	114	26.10036263090	75.81377164080
11	26.08755648680	75.79357567050	63	26.11816147930	75.80287300800	115	26.09968735650	75.81357531520
12	26.08825206730	75.79294353490	64	26.11883638450	75.80353724970	116	26.09896189720	75.81395750280
13	26.08910873920	75.79265625180	65	26.11952669580	75.80418191470	117	26.09835884020	75.81339006710
14	26.08979417710	75.79312793180	66	26.12021700400	75.80482658730	118	26.09825044900	75.81249298740
15	26.09047173750	75.79370461210	67	26.12070188130	75.80566501740	119	26.09747803650	75.81204229440
16	26.09135467530	75.79375417790	68	26.12116413610	75.80652416460	120	26.09691165080	75.81128191100
17	26.09220420300	75.79343551320	69	26.12170962900	75.80730951950	121	26.09673662620	75.81032093040
18	26.09300839500	75.79298157610	70	26.12247702270	75.80777114720	122	26.09595432730	75.81032478690
19	26.09360798700	75.79314965610	71	26.12317024590	75.80839494730	123	26.09509826260	75.81034682530
20	26.09387905900	75.79403488760	72	26.12375458600	75.80913297820	124	26.09462111700	75.80954426940
21	26.09397281410	75.79496438760	73	26.12330052250	75.80981971200	125	26.09424490100	75.80867062040
22	26.09391017280	75.79596034780	74	26.12248735850	75.81023819090	126	26.09422482420	75.80767941630
23	26.09430751040	75.79678210660	75	26.12161185330	75.81035538370	127	26.09476545970	75.80689010610
24	26.09510745810	75.79669822020	76	26.12071500030	75.81025184260	128	26.09504967580	75.80594552990
25	26.09583203980	75.79612233430	77	26.11982775370	75.81007109690	129	26.09502349840	75.80495025190
26	26.09673421540	75.79615577110	78	26.11923085830	75.80942204700	130	26.09468182380	75.80405898590
27	26.09713670830	75.79689751970	79	26.11883086680	75.80852580210	131	26.09425270170	75.80468529050
28	26.09748899150	75.79779728790	80	26.11827840000	75.80780257200	132	26.09390288490	75.80559620160
29	26.09828540250	75.79802287980	81	26.11739180990	75.80793936830	133	26.09350697930	75.80649475090
30	26.09859797270	75.79718389250	82	26.11650860050	75.80814709280	134	26.09307729420	75.80736570860
31	26.09836850520	75.79622128840	83	26.11562539060	75.80835481430	135	26.09247750800	75.80811033680
32	26.09829421760	75.79523021860	84	26.11474043900	75.80855268910	136	26.09180103560	75.80855888280
33	26.09839663930	75.79423743610	85	26.11385177310	75.80872956720	137	26.09120791530	75.80794841950
34	26.09865653240	75.79328282660	86	26.11296310680	75.80890644210	138	26.09156067660	75.80708312590
35	26.09923733790	75.79262485790	87	26.11207459550	75.80908426560	139	26.09193883210	75.80619605440

36	26.10010521240	75.79239430170	88	26.11118627680	75.80926326810	140	26.09158914540	75.80533159850
37	26.10096043070	75.79207361950	89	26.11029795790	75.80944226840	141	26.09167182930	75.80441368110
38	26.10179129900	75.79168745740	90	26.10940963870	75.80962126620	142	26.09228207220	75.80375791030
39	26.10259205050	75.79122541830	91	26.10852651640	75.80982823360	143	26.09245880700	75.80293527080
40	26.10311292880	75.79046867990	92	26.10810913920	75.81049208190	144	26.09173338440	75.80236909450
41	26.10383084590	75.78998792760	93	26.10858164940	75.81133685230	145	26.09093916990	75.80189396850
42	26.10466735280	75.78962556910	94	26.10891038520	75.81225841290	146	26.09030720470	75.80138532310
43	26.10546982560	75.78941436970	95	26.10886884200	75.81325261340	147	26.09102702000	75.80098239150
44	26.10634137990	75.78967445980	96	26.10874990930	75.81424287180	148	26.09191113760	75.80117930050
45	26.10721889430	75.78986894560	97	26.10868112490	75.81523961480	149	26.09278073010	75.80144838010
46	26.10768093970	75.79068937570	98	26.10867418740	75.81623964900	150	26.09365244880	75.80170814170
47	26.10845569020	75.79120285000	99	26.10834231990	75.81713273960	151	26.09446714820	75.80160488720
48	26.10899310160	75.79199053420	100	26.10772479410	75.81786232260	152	26.09466880800	75.80075364220
49	26.10955569800	75.79276706950	101	26.10714105540	75.81862383880	153	26.09379484660	75.80054478830
50	26.11004203060	75.79360962970	102	26.10658760670	75.81941398320	154	26.09301107020	75.80013041850
51	26.11047874880	75.79448017640	103	26.10601492250	75.82018614610	155	26.09225114830	75.79959125500
52	26.11106590390	75.79523958990	104	26.10526576600	75.82047077330	156	26.09137282370	75.79969997980
						157	26.09061816970	75.79943207900

Details of Catchment Area/Zone of Influence of Chandali Wetland falling within the boundary limit of Tonk, Rajasthan:-

Total Area Of = 152.12

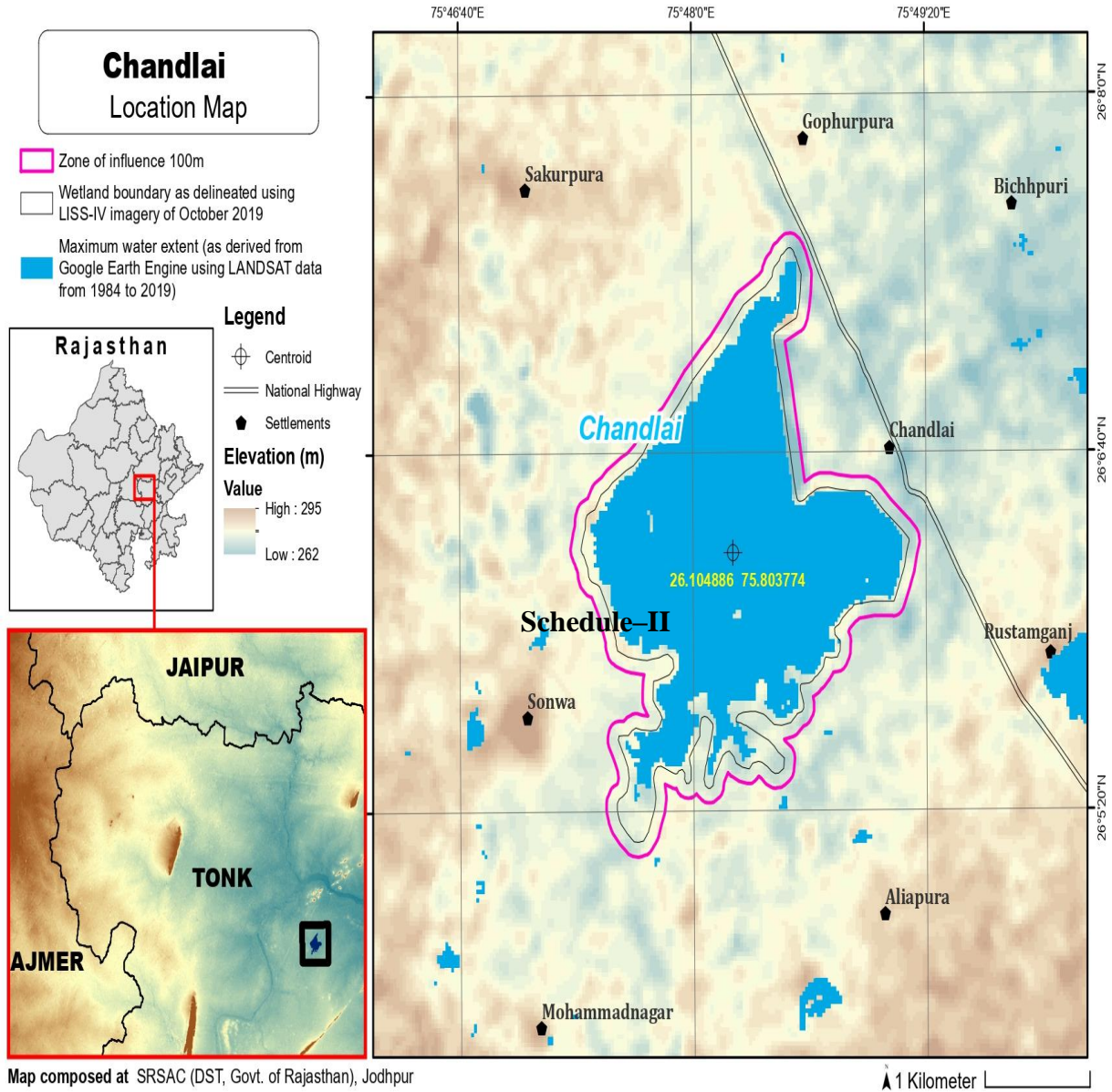
The geo-coordinates of Chandali Wetland and its Zone of influence

Chandlai

S. no	Latitude	Longitude	S. no	Latitude	Longitude	S. no	Latitude	Longitude
1	26.11073600890	75.81037049590	47	26.09110611610	75.80343194740	93	26.10636081740	75.78863872270
2	26.10984768870	75.81054948720	48	26.09069773540	75.80288372450	94	26.10724783590	75.78880581180
3	26.10943438430	75.81098079320	49	26.08986482760	75.80254800300	95	26.10802515680	75.78928767580
4	26.10976964310	75.81190355150	50	26.08941976600	75.80169153030	96	26.10852605510	75.79008973580
5	26.10982755940	75.81289873240	51	26.08959173880	75.80073814360	97	26.10926725510	75.79065005810
6	26.10968495540	75.81388507090	52	26.08981514030	75.79997223390	98	26.10978894580	75.79146279240
7	26.10960529130	75.81488124300	53	26.08976678800	75.79899623670	99	26.11033318230	75.79225641090
8	26.10957960610	75.81588028710	54	26.09030907620	75.79825465470	100	26.11081888570	75.79309942320
9	26.10950371200	75.81686979340	55	26.09056056000	75.79730302100	101	26.11126660830	75.79396221830
10	26.10907035140	75.81773480850	56	26.08977744000	75.79733652640	102	26.11189805130	75.79466808740
11	26.10845282260	75.81846439260	57	26.08888277600	75.79720928020	103	26.11257135000	75.79532306920
12	26.10786487910	75.81922193860	58	26.08803855130	75.79685789050	104	26.11313714660	75.79610176480
13	26.10731142700	75.82001208490	59	26.08719116850	75.79651464870	105	26.11374066260	75.79684535360
14	26.10674210440	75.82078746840	60	26.08647595040	75.79590588070	106	26.11436344180	75.79755965810
15	26.10607706160	75.82145327330	61	26.08611690610	75.79501157110	107	26.11504995960	75.79820910040
16	26.10519582840	75.82149764760	62	26.08615272990	75.79402131370	108	26.11575153300	75.79883865250
17	26.10432792770	75.82122514720	63	26.08665569830	75.79320454180	109	26.11643143600	75.79949489010
18	26.10345908930	75.82095934560	64	26.08729481670	75.79250170900	110	26.11706594720	75.80020642560
19	26.10262180060	75.82058539810	65	26.08803792150	75.79194576520	111	26.11770045470	75.80091796880
20	26.10179305660	75.82018851590	66	26.08890204520	75.79166557420	112	26.11830427330	75.80166151740

21	26.10106061290	75.81963498650	67	26.08979147160	75.79175555840	113	26.11897137340	75.80233506170
22	26.10093052010	75.81866936830	68	26.09048421590	75.79237098910	114	26.11965257540	75.80299130520
23	26.10093237230	75.81766937300	69	26.09117790920	75.79277333180	115	26.12034288900	75.80363597170
24	26.10087884620	75.81667271450	70	26.09201789090	75.79242449130	116	26.12101280060	75.80430320430
25	26.10071108730	75.81571088380	71	26.09282028260	75.79196608360	117	26.12148050690	75.80515856050
26	26.10017119980	75.81491331900	72	26.09369053290	75.79185637520	118	26.12194273900	75.80601772850
27	26.09936131440	75.81499143530	73	26.09440497480	75.79240130700	119	26.12254643320	75.80671561640
28	26.09846698740	75.81487862450	74	26.09455188880	75.79336729370	120	26.12331653260	75.80721641450
29	26.09771138830	75.81434287410	75	26.09495915860	75.79424999290	121	26.12401286430	75.80784145560
30	26.09744941080	75.81340477500	76	26.09485783960	75.79523360520	122	26.12454544310	75.80864461990
31	26.09682350880	75.81273118270	77	26.09527644840	75.79530101590	123	26.12468301450	75.80960844540
32	26.09624624080	75.81197256290	78	26.09614674140	75.79512600140	124	26.12418126550	75.81041844920
33	26.09566411040	75.81144082820	79	26.09704745600	75.79518674140	125	26.12339921410	75.81090485510
34	26.09478408220	75.81131712150	80	26.09743333130	75.79469388550	126	26.12256388840	75.81128450010
35	26.09417140500	75.81061467340	81	26.09757831970	75.79370830580	127	26.12167541280	75.81136074450
36	26.09364069680	75.80982378750	82	26.09787024840	75.79276419840	128	26.12077677490	75.81127505240
37	26.09336259290	75.80888296090	83	26.09836389110	75.79194506650	129	26.11988516390	75.81111771910
38	26.09291718440	75.80913164590	84	26.09920942010	75.79161283210	130	26.11903243740	75.81079895240
39	26.09216166170	75.80960281050	85	26.10007346700	75.79135045120	131	26.11849064530	75.81003032080
40	26.09126600710	75.80948472620	86	26.10092868310	75.79102976140	132	26.11809853230	75.80912971820
41	26.09061077910	75.80883914800	87	26.10173880480	75.79059016430	133	26.11737093560	75.80896671230
42	26.09029579470	75.80792155770	88	26.10233306340	75.78992694140	134	26.11648772480	75.80917442890
43	26.09050141580	75.80696842170	89	26.10295179340	75.78922061540	135	26.11560451370	75.80938214260
44	26.09102172280	75.80615784400	90	26.10381643160	75.78895284220	136	26.11471834780	75.80957316870
45	26.09058651040	75.80532051600	91	26.10461623800	75.78849743970	137	26.11382968910	75.80975008830
46	26.09072331150	75.80433556080	92	26.10548644540	75.78839030060	138	26.11294102170	75.80992695550
						139	26.11205258090	75.81010520980

The detailed Map of Chandlai Wetland and its Zone of Influence is annexed herewith as Schedule-I ('A').



Prohibited Activities in Chandalai Wetland :-

1. Conversion for non wetland uses including encroachments of any kind;
2. Setting up of any new industry and expansion of existing industries;
3. Manufacture or/and handling or/and storage or/and disposal of construction and demolition waste covered under the Construction and Demolition Waste Management Rules, 2016; hazardous substances covered under the Manufacture, Storage and Import of Hazardous Chemical Rules, 1989 or the Rules for Manufacture, Use, Import, Export and Storage of Hazardous Microorganism Genetically Engineered organized or cells, 1989 or the Hazardous Waste (Management, Handling and Transboundary Movement) Rules, 2008; electronic waste covered under the E-Waste (Management) Rules 2016; plastic waste covered under Plastic Waste (Management) Rules, 2016;
4. Solid waste storage and disposal;
5. Discharge of untreated waste and effluents from industries, cities, towns, villages and other human settlements;
6. Any construction of permanent nature except for boat jetties within fifty metres from the mean high flood level observed in the past ten years calculated from the date of commencement of these rules;
7. Commercial mining, stone quarrying and crushing units
8. Commercial water extraction Establishment of large scale commercial livestock and poultry farms;
9. Reducing area/ capacity of the water body;
10. Feeding of fishes and migratory birds by the public;
11. Any type of poaching.

Prohibited Activities in Catchment Area/Zone of Influence :-

1. Discharge of untreated Solid/liquid waste and effluents;
2. Manufacture or/and handling or/and storage or/and disposal of construction and demolition waste covered under the Construction and Demolition Waste Management Rules, 2016; hazardous substances covered under the Manufacture, Storage and Import of Hazardous Chemical Rules, 1989 or the Rules for Manufacture, Use, Import, Export and Storage of Hazardous Microorganism Genetically Engineered organized or cells, 1989 or the Hazardous Waste (Management, Handling and Transboundary Movement) Rules, 2008; electronic waste covered under the E-Waste (Management) Rules 2016; plastic waste covered under Plastic Waste (Management) Rules, 2016;
3. Extraction of commercial water including groundwater.
4. Any type of poaching;

Schedule–III**Regulated Activities in Chandalai Wetland :-**

1. Fisheries;
2. Plying of boats;
3. Desilting;
4. Construction of temporary structures;
5. Water extraction for certain purposes.

Regulated Activities in Catchment Area/Zone of Influence :-

1. Conversion of land for any type of construction;
2. Setting up of any new industries and expansion of existing industries;
3. Mining.

[F.No.6 (3) Env/2023]

By order of the Governor,

Shikhar Agrawal,

Additional Chief Secretary to the Government.

Government Central Press, Jaipur.