



सत्यमेव जयते

राजस्थान राजपत्र
विशेषांक

साधिकार प्रकाशित

RAJASTHAN GAZETTE
Extraordinary

Published by Authority

भाद्र 15, बुधवार, शाके 1945-सितम्बर 06, 2023
Bhadra 15, Wednesday, Saka 1945- September 06, 2023

भाग 4 (ग)

उप-खण्ड (I)

राज्य सरकार तथा अन्य राज्य-प्राधिकारियों द्वारा जारी किये गये (सामान्य आदेशों, उप-विधियों आदि को सम्मिलित करते हुए) सामान्य कानूनी नियम।

Department of Environment and Climate Change
Notification

Jaipur, August 24, 2023

G.S.R.126 .-The following draft of the notification, which the State Government proposes to issue in exercise of the powers conferred by rule 7 of the Wetland (Conservation and Management) Rules, 2017 read with provisions of the Environment (Protection) Act, 1986 (Central Act No. 29 of 1986), is hereby published for the information of the persons likely to be concerned or affected thereby and notice is hereby given to them that the said draft notification shall be taken into consideration after the expiry of a period of sixty days from the date on which copies of this notification as published in the Official Gazette are made available to the public.

Any person interested in making any objection or suggestion on the proposals contained in the draft notification may forward the same in writing for consideration to the State Government within the period of 60 days as specified above to the Director cum Joint Secretary, Department of Environment and Climate Change Room No. 8240 SSO Building, Government Secretariat, Jaipur, Rajasthan or at env_raj@yahoo.co.in.

Draft Notification

WHEREAS, the Parsoli wetland, situated in village Parsoli, Tehsil Begun, district Chittorgarh Rajasthan, is considered to be critically significant for its ecosystem services and biodiversity values for the local communities and society at large;

AND WHEREAS, it is considered that for sustaining the said values, the ecological character of wetland ecosystem needs to be maintained by regulating developmental activities within the wetland as well as within its zone of influence;

NOW THEREFORE, the State Government declares that the Parsoli wetland shall be covered under the provisions of the Wetlands (Conservation and Management) Rules, 2017 and notifies that,-

- (i) the extent of the wetland /wetland complex and its zone of influence shall be as described in Schedule-I of this notification;
- (ii) the activities prohibited within the wetland and its zone of influence shall be as listed in Schedule-II of this notification;
- (iii) the activities regulated within the wetland and its zone of influence, i.e. permitted only with permission of the State Government shall be as listed in Schedule-III of this

notification. Request for permission for regulated activities may be made to the District Environment Committee headed by the District Collector; and

- (iv) the State Wetland Authority, Rajasthan shall monitor the enforcement of the provisions of this notification.

Schedule-I

Parsoli Wetland comprising of total area of 99.97 Hectare within the following boundary delineation:- The geo-coordinates of Parsoli Wetland of Chittorgarh, Rajasthan

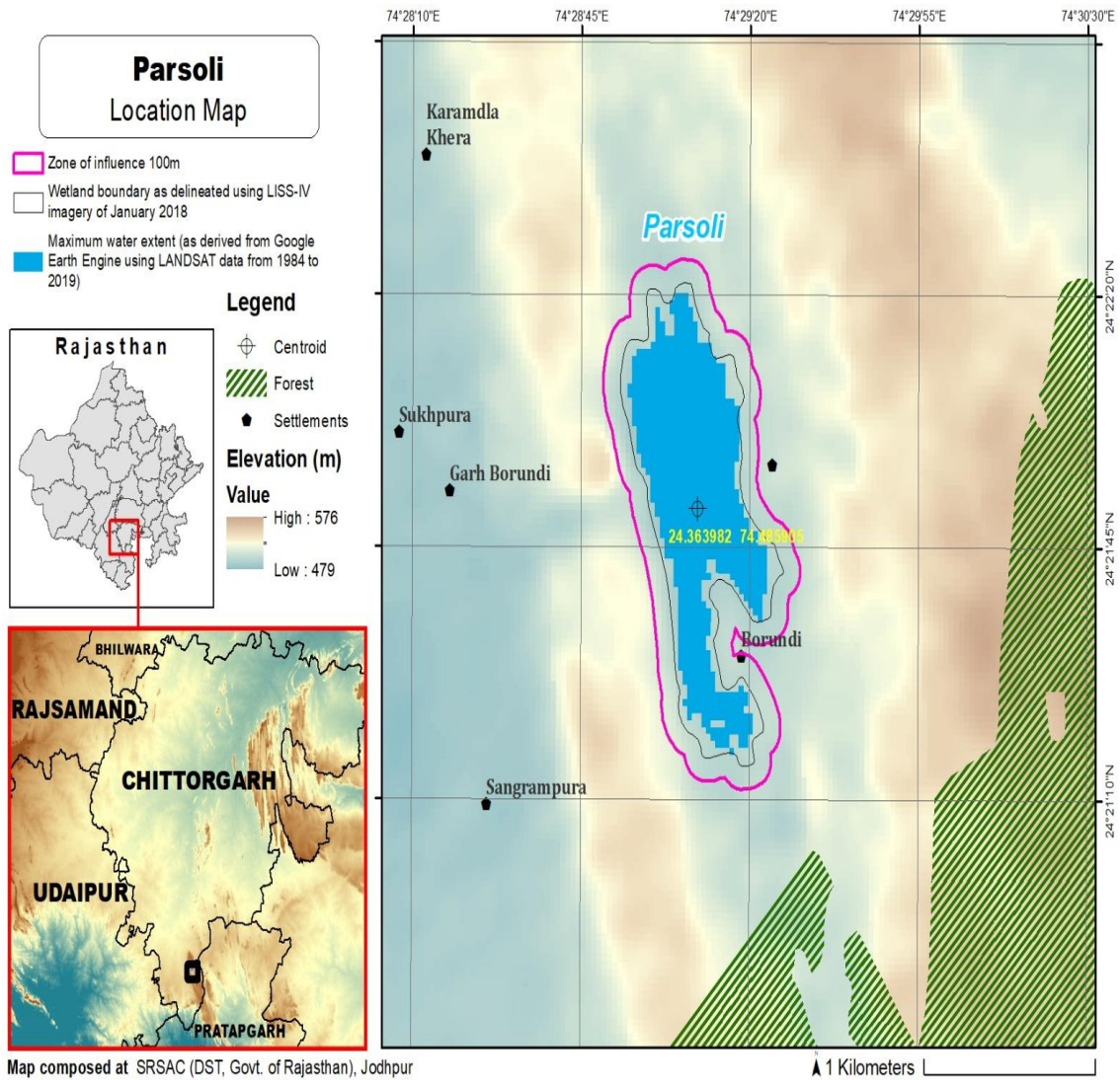
Parsoli								
S.No.	Latitude	Longitude	S.No.	Latitude	Longitude	S.No.	Latitude	Longitude
1	24.355346	74.485492	21	24.371408	74.482967	41	24.361440	74.490674
2	24.356027	74.484901	22	24.372299	74.482973	42	24.360705	74.490189
3	24.356908	74.484876	23	24.372228	74.483745	43	24.359835	74.490078
4	24.357765	74.484633	24	24.372126	74.484435	44	24.359686	74.489138
5	24.358656	74.484549	25	24.372717	74.485060	45	24.360336	74.488507
6	24.359543	74.484424	26	24.372180	74.485628	46	24.361019	74.487880
7	24.360429	74.484290	27	24.371347	74.485979	47	24.361248	74.486982
8	24.361305	74.484097	28	24.370674	74.486537	48	24.360512	74.486623
9	24.362167	74.483836	29	24.369851	74.486809	49	24.359773	74.487108
10	24.363000	74.483485	30	24.369946	74.487737	50	24.358942	74.486830
11	24.363843	74.483158	31	24.369186	74.488114	51	24.358074	74.487062
12	24.364717	74.482985	32	24.368396	74.488518	52	24.357217	74.487330
13	24.365462	74.482486	33	24.367579	74.488195	53	24.357306	74.488150
14	24.366292	74.482146	34	24.366717	74.488380	54	24.357170	74.488839
15	24.367160	74.481911	35	24.365824	74.488398	55	24.356424	74.489376
16	24.367994	74.481569	36	24.364934	74.488343	56	24.355598	74.489723
17	24.368878	74.481432	37	24.364092	74.488629	57	24.355029	74.489088
18	24.369760	74.481558	38	24.363387	74.489226	58	24.354192	74.489087
19	24.370492	74.482039	39	24.362777	74.489939	59	24.354300	74.488250
20	24.370524	74.482991	40	24.362164	74.490528	60	24.354563	74.487448
						61	24.354392	74.486493

Details of Catchment Area/Zone of Influence of Parsoli Wetland falling within the boundary limit of Chittorgarh, Rajasthan:- Total Area Of = 63.03 Ha
The geo-coordinates of Parsoli Wetland and its Zone of influence

Parsoli								
S.No.	Latitude	Longitude	S.No.	Latitude	Longitude	S.No.	Latitude	Longitude
1	24.353549	74.487621	22	24.369445	74.480496	43	24.364178	74.489776
2	24.353499	74.486721	23	24.370315	74.480712	44	24.363557	74.490469
3	24.353674	74.485782	24	24.371072	74.481219	45	24.363024	74.491224
4	24.354373	74.485214	25	24.371492	74.481979	46	24.362213	74.491617
5	24.354933	74.484502	26	24.372383	74.481997	47	24.361358	74.491795
6	24.355689	74.483997	27	24.373137	74.482460	48	24.360681	74.491211
7	24.356565	74.483844	28	24.373357	74.483388	49	24.359812	74.491105
8	24.357433	74.483712	29	24.373395	74.484262	50	24.359080	74.490602
9	24.358320	74.483596	30	24.373605	74.485197	51	24.358789	74.489686
10	24.359208	74.483489	31	24.373340	74.486110	52	24.358857	74.488722
11	24.360094	74.483355	32	24.372559	74.486542	53	24.359347	74.488069
12	24.360973	74.483177	33	24.371720	74.486869	54	24.358503	74.487943
13	24.361837	74.482923	34	24.371037	74.487458	55	24.358372	74.488763
14	24.362671	74.482576	35	24.370733	74.488229	56	24.357834	74.489512
15	24.363514	74.482249	36	24.370098	74.488870	57	24.357110	74.490085

16	24.364381	74.482015	37	24.369273	74.489203	58	24.356306	74.490512
17	24.365131	74.481551	38	24.368432	74.489496	59	24.355441	74.490697
18	24.365973	74.481230	39	24.367579	74.489269	60	24.354666	74.490271
19	24.366840	74.480990	40	24.366739	74.489357	61	24.353860	74.490052
20	24.367675	74.480646	41	24.365846	74.489385	62	24.353316	74.489317
21	24.368554	74.480473	42	24.364962	74.489345			

The detailed Map of Parsoli Wetland and its Zone of Influence is annexed herewith as Schedule-I ('A').



Schedule-II**Prohibited Activities in Parsoli Wetland:-**

1. Conversion for non wetland uses including encroachments of any kind;
2. Setting up of any new industry and expansion of existing industries;
3. Manufacture or/and handling or/and storage or/and disposal of construction and demolition waste covered under the Construction and Demolition Waste Management Rules, 2016; hazardous substances covered under the Manufacture, Storage and Import of Hazardous Chemical Rules, 1989 or the Rules for Manufacture, Use, Import, Export and Storage of Hazardous Microorganism Genetically Engineered organized or cells, 1989 or the Hazardous Waste (Management, Handling and Transboundary Movement) Rules, 2008; electronic waste covered under the E-Waste (Management) Rules 2016; plastic waste covered under Plastic Waste (Management) Rules, 2016;
4. Solid waste storage and disposal;
5. Discharge of untreated waste and effluents from industries, cities, towns, villages and other human settlements;
6. Any construction of permanent nature except for boat jetties within fifty metres from the mean high flood level observed in the past ten years calculated from the date of commencement of these rules;
7. Commercial mining, stone quarrying and crushing units
8. Commercial water extraction Establishment of large scale commercial livestock and poultry farms;
9. Reducing area/ capacity of the water body;
10. Feeding of fishes and migratory birds by the public;
11. Any type of poaching.

Prohibited Activities in Catchment Area/Zone of Influence:-

1. Discharge of untreated Solid/liquid waste and effluents;
2. Manufacture or/and handling or/and storage or/and disposal of construction and demolition waste covered under the Construction and Demolition Waste Management Rules, 2016; hazardous substances covered under the Manufacture, Storage and Import of Hazardous Chemical Rules, 1989 or the Rules for Manufacture, Use, Import, Export and Storage of Hazardous Microorganism Genetically Engineered organized or cells, 1989 or the Hazardous Waste (Management, Handling and Transboundary Movement) Rules, 2008; electronic waste covered under the E-Waste (Management) Rules 2016; plastic waste covered under Plastic Waste (Management) Rules, 2016;
3. Extraction of commercial water including groundwater.
4. Any type of poaching;

Schedule-III**Regulated Activities in Parsoli Wetland:-**

1. Fisheries;
2. Plying of boats;
3. Desilting;
4. Construction of temporary structures;
5. Water extraction for certain purposes.

Regulated Activities in Catchment Area/Zone of Influence:-

1. Conversion of land for any type of construction;
2. Setting up of any new industries and expansion of existing industries;
3. Mining.

[F.No.6 (3) Env/2023]

By order of the Governor,

Shikhar Agrawal,

Additional Chief Secretary to the Government.

Government Central Press, Jaipur.