 सत्यमेव जयते	<b>राजस्थान राजपत्र</b> <b>विशेषांक</b>	<b>RAJASTHAN GAZETTE</b> <b>Extraordinary</b>
	<b>साधिकार प्रकाशित</b>	<b>Published by Authority</b>
	ज्येष्ठ 12, शुक्रवार, शाके 1945-जून 02, 2023 <i>Jyaistha 12, Friday, Saka 1945- June 02, 2023</i>	

भाग 4 (ग)

उप-खण्ड(II)

राज्य सरकार तथा अन्य राज्य प्राधिकारियों द्वारा जारी किये गये कानूनी आदेश तथा अधिसूचनाएं।

**Department of Environment and Climate Change**  
Notification

**Jaipur, May 30, 2023**

**S.O.91** .- The following draft of the notification, which the State Government proposes to issue in exercise of the powers conferred by rule 7 of the Wetland (Conservation and Management) Rules, 2017 read with Environment (Protection) Act, 1986 (Central Act No. 29 of 1986), is hereby published for the information of the persons likely to be concerned or affected thereby and notice is hereby given to them that the said draft notification shall be taken into consideration after the expiry of a period of sixty days from the date on which copies of this notification as published in the Official Gazette are made available to the public.

Any person interested in making any objection or suggestion on the proposals contained in the draft notification may forward the same in writing for consideration to the Director cum Joint Secretary, Department of Environment and Climate Change Room No. 8240 SSO Building, Government Secretariat, Jaipur, Rajasthan or at env\_raj@yahoo.co.in.

**Draft Notification**

WHEREAS, the Mamachari Dam wetland, situated in Village Mamachari, Tehsil Karauli, district Karauli, Rajasthan, is considered to be critically significant for its ecosystem services and biodiversity values for the local communities and society at large;

AND WHEREAS, it is considered that for sustaining the said values, the ecological character of wetland ecosystem needs to be maintained by regulating developmental activities within the wetland as well as within its zone of influence;

NOW THEREFORE, the State Government declares that the Mamachari Dam wetland shall be covered under the provisions of the Wetlands (Conservation and Management) Rules, 2017 and notifies that,-

- (i) the extent of the wetland /wetland complex and its zone of influence shall be as described in Schedule-I of this notification;
- (ii) the activities prohibited within the wetland and its zone of influence shall be as listed in Schedule-II of this notification;
- (iii) the activities regulated within the wetland and its zone of influence, i.e. permitted only with permission of the State Government shall be as listed in Schedule-III of this notification. Request for permission for regulated activities may be made to the District

Environment Committee headed by the District Collector; and

- (iv) the State Wetland Authority, Rajasthan shall monitor the enforcement of the provisions of this notification.

### Schedule-I

**Mamachari Dam Wetland Complex comprising of total area of 132.13 Hectare within the following boundary delineation:-**

**The geo-coordinates of Mamachari Dam Wetland of Karauli, Rajasthan**

Mamchhari Dam								
S.no	Latitude	Longitude	S.no	Latitude	Longitude	S.no	Latitude	Longitude
1	26.418102	76.963338	53	26.433392	76.971394	105	26.418923	76.965559
2	26.418031	76.964121	54	26.433717	76.970517	106	26.418239	76.966147
3	26.418825	76.963917	55	26.434358	76.969840	107	26.418038	76.967046
4	26.419542	76.963333	56	26.434711	76.969038	108	26.417633	76.966361
5	26.420392	76.963052	57	26.434147	76.969568	109	26.416773	76.966399
6	26.421169	76.962684	58	26.433382	76.970031	110	26.416494	76.967281
7	26.421984	76.962391	59	26.432558	76.970388	111	26.416419	76.968264
8	26.422442	76.961554	60	26.432216	76.969982	112	26.416575	76.969230
9	26.422893	76.960719	61	26.432997	76.969535	113	26.416483	76.970208
10	26.422560	76.960103	62	26.433716	76.968967	114	26.416414	76.971185
11	26.421761	76.959931	63	26.433844	76.968033	115	26.416598	76.972122
12	26.422514	76.959694	64	26.434409	76.967462	116	26.416171	76.972956
13	26.423299	76.959421	65	26.434259	76.967313	117	26.416392	76.973661
14	26.423535	76.958474	66	26.433738	76.967246	118	26.415657	76.973458
15	26.423303	76.957749	67	26.433896	76.966404	119	26.414961	76.973616
16	26.422517	76.957309	68	26.433718	76.965516	120	26.414096	76.973814
17	26.422843	76.956827	69	26.433739	76.964529	121	26.413565	76.973794
18	26.423723	76.956823	70	26.433198	76.963929	122	26.414245	76.973212
19	26.424588	76.956625	71	26.432352	76.963932	123	26.414258	76.972892
20	26.425450	76.956390	72	26.431481	76.963922	124	26.413446	76.973281
21	26.426282	76.956046	73	26.431061	76.963663	125	26.412564	76.973368
22	26.427136	76.956075	74	26.431556	76.962896	126	26.411687	76.973508
23	26.427862	76.956617	75	26.432355	76.962479	127	26.410875	76.973663
24	26.428421	76.957350	76	26.432490	76.961626	128	26.410735	76.973168
25	26.429135	76.956998	77	26.431643	76.961731	129	26.411557	76.972793
26	26.429623	76.957062	78	26.430772	76.961828	130	26.412421	76.972568
27	26.430401	76.957375	79	26.429969	76.961523	131	26.413296	76.972393
28	26.431111	76.956942	80	26.429379	76.960863	132	26.414182	76.972342
29	26.431872	76.956466	81	26.428829	76.961575	133	26.415039	76.972160
30	26.432427	76.956910	82	26.428073	76.961171	134	26.415118	76.971198
31	26.432906	76.957734	83	26.427814	76.960232	135	26.415192	76.970223
32	26.433618	76.958228	84	26.427249	76.959968	136	26.415406	76.969265
33	26.434499	76.958354	85	26.427319	76.960939	137	26.415591	76.968322
34	26.435384	76.958455	86	26.426745	76.961279	138	26.415348	76.967467
35	26.435852	76.959108	87	26.426515	76.960348	139	26.414840	76.968047
36	26.436425	76.959796	88	26.426076	76.959500	140	26.414024	76.968172
37	26.437225	76.960209	89	26.425599	76.958999	141	26.413329	76.968365
38	26.437406	76.961141	90	26.425147	76.959835	142	26.413662	76.967489
39	26.437292	76.962117	91	26.424767	76.960723	143	26.413528	76.966537
40	26.437075	76.963068	92	26.424309	76.961556	144	26.413113	76.966008
41	26.436718	76.963971	93	26.424133	76.962513	145	26.413932	76.966034

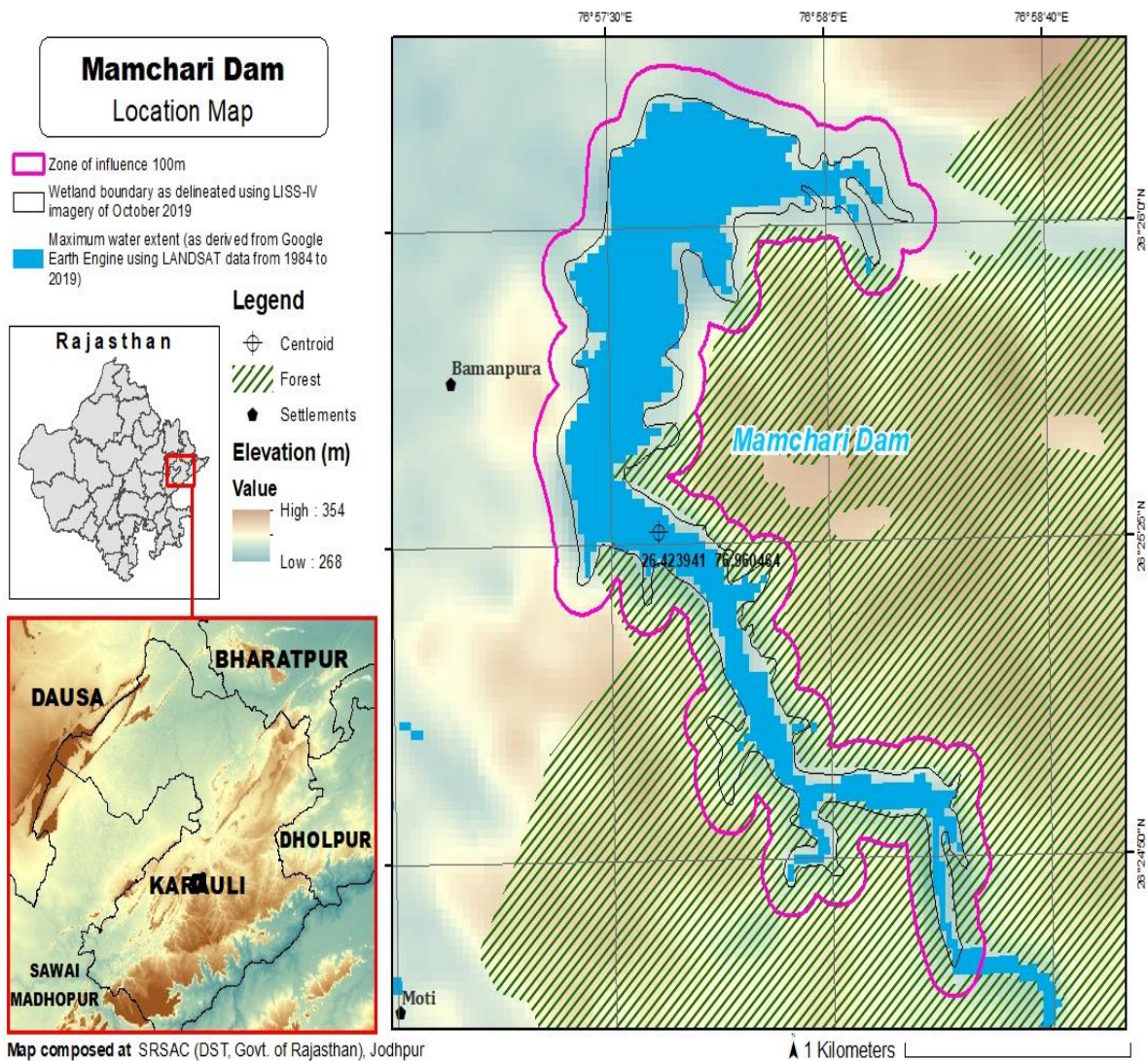
42	26.436498	76.964927	94	26.423500	76.963143	146	26.414248	76.966895
43	26.436243	76.965858	95	26.423051	76.963585	147	26.414637	76.966963
44	26.436015	76.966802	96	26.422402	76.963729	148	26.415063	76.966153
45	26.435202	76.966995	97	26.422756	76.964617	149	26.415776	76.966497
46	26.435339	76.967833	98	26.422863	76.965535	150	26.416227	76.965693
47	26.435155	76.968429	99	26.422110	76.965050	151	26.416921	76.965087
48	26.435425	76.969264	100	26.421724	76.964221	152	26.417054	76.964268
49	26.435669	76.970186	101	26.420980	76.964096	153	26.416314	76.963733
50	26.434957	76.970617	102	26.420763	76.964602	154	26.415587	76.963441
51	26.434120	76.970939	103	26.420147	76.964935	155	26.416317	76.962981
52	26.433660	76.971734	104	26.419720	76.965584	156	26.417150	76.963156
						157	26.417903	76.962679

**Details of Catchment Area/Zone of Influence of Mamachari Dam Wetland falling within the boundary limit of Karauli, Rajasthan:- Total Area Of = 141.96 ha**  
**The geo-coordinates of Mamachari Wetland and its Zone of influence of Mamachari Dam**

Mamchhari dam								
S.no	Latitude	Longitude	S.no	Latitude	Longitude	S.no	Latitude	Longitude
1	26.4099	76.9725	44	26.4264	76.955	87	26.4328	76.965
2	26.4107	76.9721	45	26.4273	76.9551	88	26.4319	76.9649
3	26.4115	76.9718	46	26.4281	76.9555	89	26.4311	76.9651
4	26.4124	76.9716	47	26.4287	76.9559	90	26.4303	76.9646
5	26.4133	76.9714	48	26.4296	76.9557	91	26.4301	76.9637
6	26.4142	76.9714	49	26.4303	76.9563	92	26.4303	76.9628
7	26.4142	76.9704	50	26.431	76.9559	93	26.4295	76.9624
8	26.4144	76.9695	51	26.4317	76.9555	94	26.4287	76.9626
9	26.4139	76.9694	52	26.4326	76.9555	95	26.4279	76.9623
10	26.413	76.9694	53	26.4332	76.9562	96	26.4271	76.9624
11	26.4125	76.9687	54	26.4336	76.9571	97	26.4263	76.9621
12	26.4125	76.9677	55	26.4344	76.9574	98	26.4258	76.9613
13	26.4124	76.967	56	26.4353	76.9575	99	26.4255	76.9613
14	26.4121	76.9661	57	26.4362	76.9577	100	26.4251	76.9622
15	26.4125	76.9652	58	26.4366	76.9585	101	26.4249	76.9631
16	26.4133	76.9649	59	26.4372	76.9591	102	26.4243	76.9638
17	26.4142	76.965	60	26.4379	76.9596	103	26.4238	76.9646
18	26.415	76.9652	61	26.4383	76.9605	104	26.4238	76.9655
19	26.4157	76.9649	62	26.4383	76.9615	105	26.4234	76.9663
20	26.4153	76.9645	63	26.4382	76.9625	106	26.4225	76.9665
21	26.4147	76.9638	64	26.4379	76.9634	107	26.4218	76.966
22	26.4148	76.9628	65	26.4376	76.9643	108	26.421	76.9656
23	26.4155	76.9623	66	26.4373	76.9653	109	26.4205	76.9663
24	26.4164	76.962	67	26.4371	76.9662	110	26.4197	76.9666
25	26.4172	76.962	68	26.4369	76.9672	111	26.4191	76.9669
26	26.418	76.9615	69	26.4364	76.9679	112	26.4187	76.9677
27	26.4188	76.9618	70	26.4363	76.9689	113	26.4179	76.9681
28	26.4193	76.9624	71	26.4366	76.9698	114	26.4173	76.9682
29	26.4201	76.962	72	26.4364	76.9708	115	26.4175	76.9691
30	26.421	76.9617	73	26.4358	76.9714	116	26.4174	76.9701
31	26.4216	76.9612	74	26.4349	76.9717	117	26.4173	76.9711
32	26.4211	76.9606	75	26.4344	76.9723	118	26.4175	76.972

33	26.4209	76.9597	76	26.4337	76.9729	119	26.4173	76.973
34	26.4214	76.9589	77	26.4329	76.9727	120	26.4173	76.9739
35	26.4223	76.9587	78	26.4324	76.9719	121	26.4167	76.9746
36	26.4222	76.9583	79	26.432	76.9714	122	26.4159	76.9746
37	26.4216	76.9576	80	26.4313	76.9708	123	26.415	76.9747
38	26.4216	76.9566	81	26.4312	76.9699	124	26.4142	76.9749
39	26.4221	76.9559	82	26.4318	76.9691	125	26.4133	76.975
40	26.423	76.9559	83	26.4326	76.9687	126	26.4127	76.9744
41	26.4239	76.9557	84	26.4329	76.9679	127	26.4118	76.9745
42	26.4247	76.9556	85	26.4329	76.967	128	26.4109	76.9747
43	26.4256	76.9553	86	26.4328	76.966	129	26.4101	76.9744
						130	26.4096	76.9736

The detailed Map of Mamchari Dam Wetland and its Zone of Influence is annexed herewith as Schedule-I ('A').



**Schedule-II****Prohibited Activities in Mamachari Dam Wetland :-**

1. Conversion for non wetland uses including encroachments of any kind;
2. Setting up of any new industry and expansion of existing industries;
3. Manufacture or/and handling or/and storage or/and disposal of construction and demolition waste covered under the Construction and Demolition Waste Management Rules, 2016; hazardous substances covered under the Manufacture, Storage and Import of Hazardous Chemical Rules, 1989 or the Rules for Manufacture, Use, Import, Export and Storage of Hazardous Microorganism Genetically Engineered organized or cells, 1989 or the Hazardous Waste (Management, Handling and Transboundary Movement) Rules, 2008; electronic waste covered under the E-Waste (Management) Rules 2016; plastic waste covered under Plastic Waste (Management) Rules, 2016;
4. Solid waste storage and disposal;
5. Discharge of untreated waste and effluents from industries, cities, towns, villages and other human settlements;
6. Any construction of permanent nature except for boat jetties within fifty metres from the mean high flood level observed in the past ten years calculated from the date of commencement of these rules;
7. Commercial mining, stone quarrying and crushing units
8. Commercial water extraction Establishment of large scale commercial livestock and poultry farms;
9. Reducing area/ capacity of the water body;
10. Feeding of fishes and migratory birds by the public;
11. Any type of poaching.

**Prohibited Activities in Catchment Area/Zone of Influence :-**

1. Discharge of untreated Solid/liquid waste and effluents;
2. Manufacture or/and handling or/and storage or/and disposal of construction and demolition waste covered under the Construction and Demolition Waste Management Rules, 2016; hazardous substances covered under the Manufacture, Storage and Import of Hazardous Chemical Rules, 1989 or the Rules for Manufacture, Use, Import, Export and Storage of Hazardous Microorganism Genetically Engineered organized or cells, 1989 or the Hazardous Waste (Management, Handling and Transboundary Movement) Rules, 2008; electronic waste covered under the E-Waste (Management) Rules 2016; plastic waste covered under Plastic Waste (Management) Rules, 2016;
3. Extraction of commercial water including groundwater.
4. Any type of poaching;

**Schedule-III****Regulated Activities in Mamachari Dam Wetland :-**

1. Fisheries;
2. Plying of boats;
3. Desilting;
4. Construction of temporary structures;
5. Water extraction for certain purposes.

**Regulated Activities in Catchment Area/Zone of Influence :-**

1. Conversion of land for any type of construction;
2. Setting up of any new industries and expansion of existing industries;
3. Mining.

**[F.No.6 (3) Env/2023]**  
**By order of the Governor,**

Shikhar Agrawal,  
**Additional Chief Secretary to the Government.**

\_\_\_\_\_

**Government Central Press, Jaipur.**