 सत्यमेव जयते	<b>राजस्थान राजपत्र</b> <b>विशेषांक</b>	<b>RAJASTHAN GAZETTE</b> <b>Extraordinary</b>
	<b>साधिकार प्रकाशित</b>	<b>Published by Authority</b>
	फाल्गुन 09, बुधवार, शाके 1945-फरवरी 28, 2024 <i>Phalguna 09 Wednesday, Saka 1945- February 28, 2024</i>	

भाग 4 (ग)

उप-खण्ड(II)

राज्य सरकार तथा अन्य राज्य प्राधिकारियों द्वारा जारी किये गये कानूनी आदेश तथा  
अधिसूचनाएं।

**Department of Environment and Climate Change**  
Notification

**Jaipur, February 19, 2024**

**S.O.560** .-Whereas the draft notification of the Kit Baori wetland, situated in village Tidi, Tehsil Girwa, district Udaipur Rajasthan was published as required by rule 7 of the Wetland (Conservation and Management) Rules, 2017 read with the Environment (Protection) Act, 1986 (Central Act No. 29 of 1986), vide notification number F.No.6(3)Env/2023 dated 30.05.2023 in the Rajasthan Gazette, Extraordinary, Part 4 (ga), sub-part (II) S.O. 97 dated 02.06.2023, inviting objections and suggestions from all persons likely to be affected thereby before expiry of the period of sixty days from the date on which the copies of the said notification were made available to the public.

And whereas, copies of the Gazette in which the said notification was published were made available to the public on the 02.06.2023.

And whereas, no objections and suggestions were received on the said Draft Notification.

Now therefore, in exercise of the powers conferred by rule 7 of the Wetland (Conservation and Management) Rules, 2017 read with provisions of the Environment (Protection) Act, 1986 (Central Act No. 29 of 1986), the State Government hereby notifies Kit Baori wetland, situated in village Tidi, Tehsil Girwa, district Udaipur Rajasthan as a wetland and that,-

- (i) the extent of the wetland /wetland complex and its zone of influence shall be as described in Schedule-I of this notification;
- (ii) the activities prohibited within the wetland and its zone of influence shall be as listed in Schedule-II of this notification;
- (iii) the activities regulated within the wetland and its zone of influence, i.e. permitted only with permission of the State Government shall be as listed in Schedule-III of this notification. Request for permission for regulated activities may be made to the District Environment Committee headed by the District Collector; and
- (iv) the State Wetland Authority, Rajasthan shall monitor the enforcement of the provisions of this notification.

**Schedule-I**

**Kit Baori Wetland Complex comprising of total area of 9.64 Hectare within the following boundary delineation:-**

**The geo-coordinates of Kit Baori Wetland of Udaipur, Rajasthan**

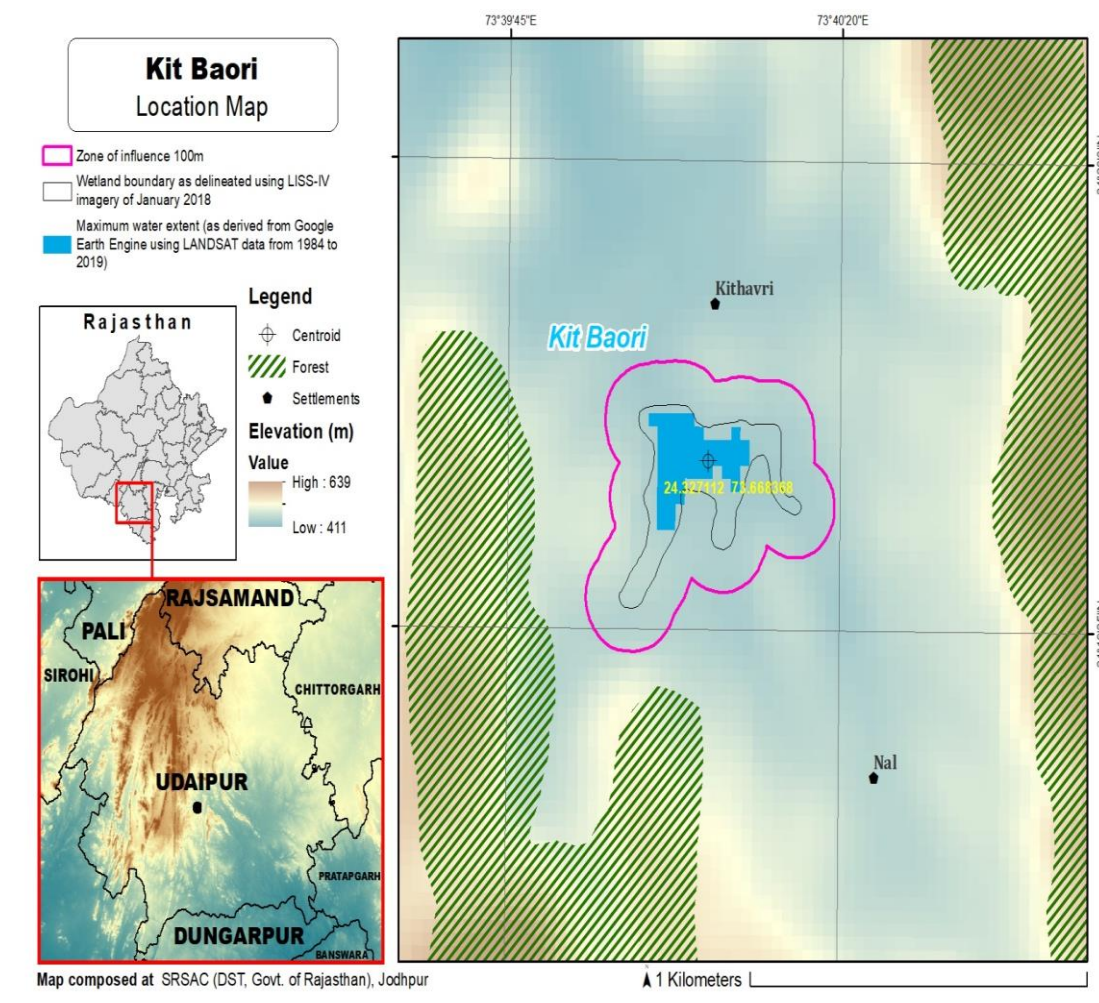
Kit Baori					
S.No.	Latitude	Longitude	S.No.	Latitude	Longitude
1	24.325005	73.666318	12	24.326040	73.670817
2	24.325826	73.666664	13	24.326658	73.670189
3	24.326640	73.666637	14	24.327175	73.669722
4	24.327495	73.666715	15	24.326371	73.669360
5	24.328184	73.666465	16	24.325525	73.669124
6	24.328275	73.667429	17	24.325587	73.668485
7	24.327825	73.668202	18	24.326390	73.668436
8	24.327928	73.669159	19	24.326411	73.667568
9	24.327890	73.670088	20	24.325561	73.667382
10	24.327280	73.670501	21	24.324799	73.666877
11	24.326425	73.670634	22	24.324071	73.666331

**Details of Catchment Area/Zone of Influence of Kit Baori Wetland falling within the boundary limit of Udaipur, Rajasthan:- Total Area Of = 23.81 ha**

**The geo-coordinates of Kit Baori Wetland and its Zone of influence**

Kit Baori					
S.No.	Latitude	Longitude	S.No.	Latitude	Longitude
1	24.323379	73.665309	13	24.328750	73.670573
2	24.324131	73.664823	14	24.328210	73.671312
3	24.324963	73.665083	15	24.327342	73.671480
4	24.325695	73.665633	16	24.326634	73.671957
5	24.326566	73.665525	17	24.325767	73.671985
6	24.327327	73.665525	18	24.325179	73.671289
7	24.328194	73.665376	19	24.325254	73.670345
8	24.328911	73.665896	20	24.324793	73.669780
9	24.329150	73.666823	21	24.324394	73.668928
10	24.329148	73.667798	22	24.324618	73.668000
11	24.328770	73.668645	23	24.324002	73.667476
12	24.328839	73.669610	24	24.323321	73.666864

The detailed Map of Kit Baori Wetland and its Zone of Influence is annexed herewith as Schedule-I ('A').



## Schedule-II

### Prohibited Activities in Kit Baori Wetland:-

1. Conversion for non wetland uses including encroachments of any kind;
2. Setting up of any new industry and expansion of existing industries;
3. Manufacture or/and handling or/and storage or/and disposal of construction and demolition waste covered under the Construction and Demolition Waste Management Rules, 2016; hazardous substances covered under the Manufacture, Storage and Import of Hazardous Chemical Rules, 1989 or the Rules for Manufacture, Use, Import, Export and Storage of Hazardous Microorganism Genetically Engineered organized or cells, 1989 or the Hazardous Waste (Management, Handling and Transboundary Movement) Rules, 2008; electronic waste covered under the E-Waste (Management) Rules 2016; plastic waste covered under Plastic Waste (Management) Rules, 2016;
4. Solid waste storage and disposal;
5. Discharge of untreated waste and effluents from industries, cities, towns, villages and other human settlements;

6. Any construction of permanent nature except for boat jetties within fifty metres from the mean high flood level observed in the past ten years calculated from the date of commencement of these rules;
7. Commercial mining, stone quarrying and crushing units
8. Commercial water extraction Establishment of large scale commercial livestock and poultry farms;
9. Reducing area/ capacity of the water body;
10. Feeding of fishes and migratory birds by the public;
11. Any type of poaching.

**Prohibited Activities in Catchment Area/Zone of Influence:-**

1. Discharge of untreated Solid/liquid waste and effluents;
2. Manufacture or/and handling or/and storage or/and disposal of construction and demolition waste covered under the Construction and Demolition Waste Management Rules, 2016; hazardous substances covered under the Manufacture, Storage and Import of Hazardous Chemical Rules, 1989 or the Rules for Manufacture, Use, Import, Export and Storage of Hazardous Microorganism Genetically Engineered organized or cells, 1989 or the Hazardous Waste (Management, Handling and Transboundary Movement) Rules, 2008; electronic waste covered under the E-Waste (Management) Rules 2016; plastic waste covered under Plastic Waste (Management) Rules, 2016;
3. Extraction of commercial water including groundwater.
4. Any type of poaching;

**Schedule-III**

**Regulated Activities in Kit Baori Wetland:-**

1. Fisheries;
2. Plying of boats;
3. Desilting;
4. Construction of temporary structures;
5. Water extraction for certain purposes.

**Regulated Activities in Catchment Area/Zone of Influence:-**

1. Conversion of land for any type of construction;
2. Setting up of any new industries and expansion of existing industries;
3. Mining.

[F.No.6 (3) Env/2023]

By order of the Governor,

Shikhar Agrawal,

Additional Chief Secretary to the Government.

---

Government Central Press, Jaipur.